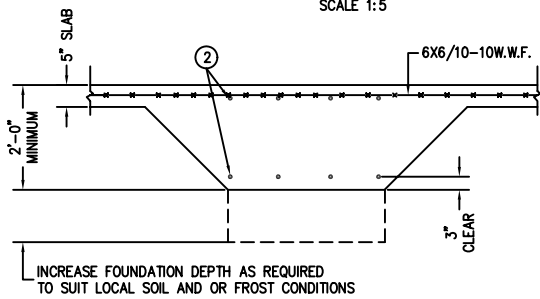
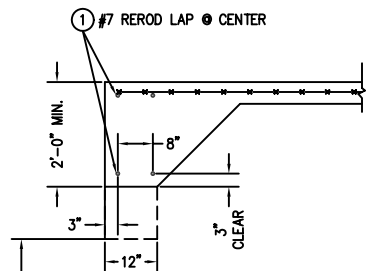


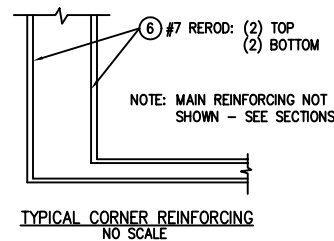
DETAIL OF BULKHEAD
SCALE 1:5



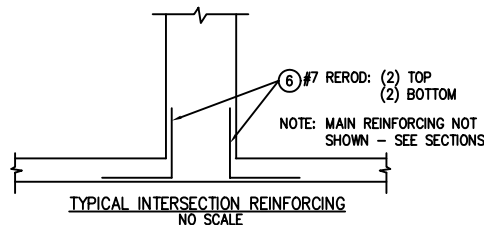
SECTION 1
SCALE 1:20
S-1



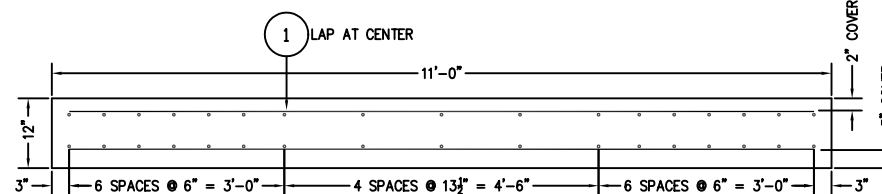
SECTION 2
SCALE 1:20
S-1



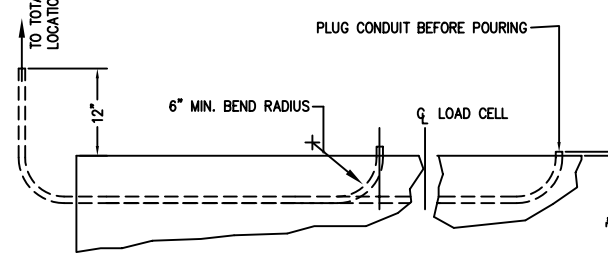
TYPICAL CORNER REINFORCING
NO SCALE



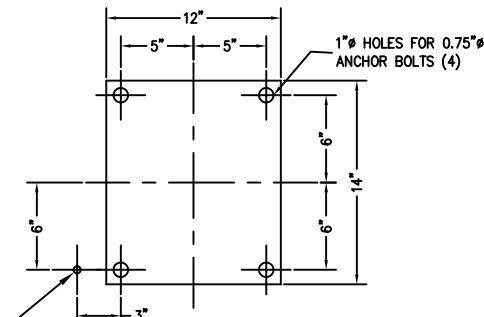
TYPICAL INTERSECTION REINFORCING
NO SCALE



ALTERNATE SLAB FOUNDATION
SEE DWG. A3995 FOR FULL DETAILS, SCALE: 1:15



SECTION THRU SHORT
1/2" PVC CONDUIT (8) REQ.
SCALE 1:12
CONTINUOUS RUN FROM LOAD CELL TO TOTALIZER LOCATION



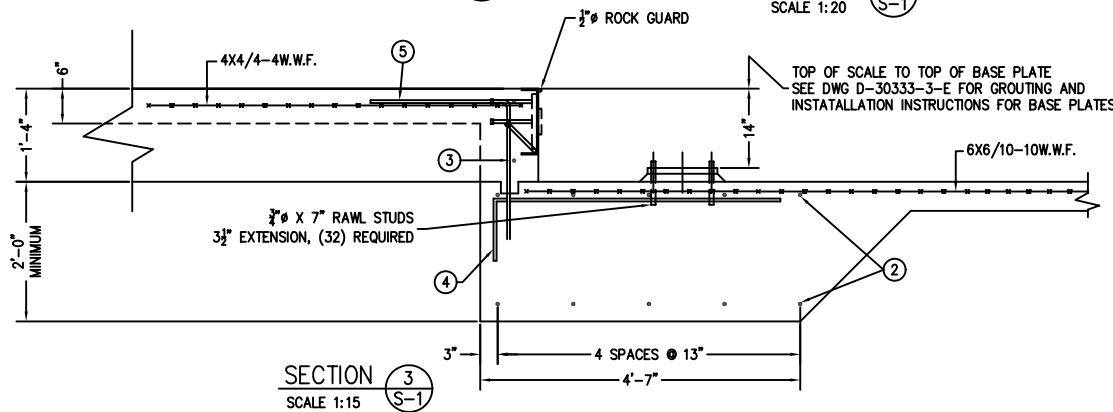
LOAD CELL BASE PLATE LAYOUT
SEE DWG B-29932-C FOR DRILLING JIG; SCALE 1:6

FOR NON COMMERCIAL SCALES PROVIDE AN APPROACH OF 2 FEET MINIMUM LENGTH WHICH IS LEVEL AND IN SAME PLANE AS THE PLATFORM.

FOR COMMERCIAL SCALES CHECK WITH LOCAL WEIGHTS AND MEASURES OFFICIALS BEFORE STARTING CONSTRUCTIONS. NATIONAL INSTITUTE OF STANDARDS AND TECHNOLOGY (NIST) HANDBOOK 44 REQUIRES:
A.) A STRAIGHT APPROACH OF AT LEAST ONE-HALF THE LENGTH OF THE PLATFORM.
B.) NOT LESS THAN 10 FEET OF APPROACH ADJACENT TO THE PLATFORM TO BE CONSTRUCTED OF CONCRETE OR SIMILAR DURABLE MATERIAL AND BE LEVEL AND IN THE SAME PLANE AS THE PLATFORM.

- NOTES:
- CONCRETE STRENGTH: 4,000 PSI @ 28 DAYS
REINFORCING ROD: GRADE 60, 60,000 PSI, ASTM 615
 - SOIL BEARING IS ASSUMED TO BE 2,000 LBS/SQ FT. TO BE VERIFIED IN THE FIELD.
 - SLAB TO BE FLAT WITHIN 1/4" & LEVEL WITHIN 1/8" PER 10 FT.
 - APPROACH COPING(BULKHEAD) TO BE ON A COMMON PLANE WITHIN 1/4".
 - TOP OF REBAR MUST BE PLACED TO CLEAR THE ANCHOR BOLTS. ANCHOR BOLTS ARE TO BE INSTALLED AFTER FOUNDATION HAS CURED.
 - SEE SPEC. A499-364-1 FOR ON SITE SUBSURFACE CONDITIONS.
 - THE LENGTH FOR REBAR NO. 1 IS MINIMUM FOR 16 PIECES LAPPED. LONGER LAPS AND/OR PIECES MAY BE USED. MINIMUM LAP IS 36".

FULL SIZE PLOT D-24X36



SECTION 3
SCALE 1:15
S-1

MATERIAL REQUIREMENTS		TOTAL WT. OF REBAR		2367
6	32	7	6'-0" 3'-0" 2'-0"	392
5	20	4	4'-0" 2'-0" 2'-0"	53
4	20	4	5'-0" 1'-0" 4'-0"	67
3	4	4	10'-6"	28
2	36	7	10'-6"	773
1	16	7	32'-3" (3' MINIMUM OVERLAP)	1054
PIECE NO.	QTY	BAR SIZE	LENGTH & DESCRIPTION	WT.
CONCRETE:		APPROACHES 6 CU. YDS		
		FOUNDATION 33 CU. YDS		
REINFORCING:		REBAR 2367 LB		
		4X4/4-4W.W.F. 220 SQ FT		
		6X6/10-10W.W.F. 660 SQ FT		

NO.	DESCRIPTION	DATE	BY	CHECKED
D	FRACTIONAL IN'S WERE DEC., NOTE 7 ADDED	07/05	CEM	
C	BULKHEAD DETAIL ADDED	03/02	CES	
B	FOOTING, OVERALL SCALE & REV. UPDATED	11/00	CES	
A	BULKHEAD REVISED	04/00	CES	
LTR	REVISION	DATE	BY	

EMERY WINSLOW SCALE COMPANY		SEYMOUR, CT U.S.A. TERRE HAUTE, IN.	
FOUNDATION PLAN 60' X 10'			
MODEL 94-10060			
A.G. WITH FOOTINGS			
SCALE	FIRST USED ON	DRAWING NO.	REV.
1:30		A3164-5	D