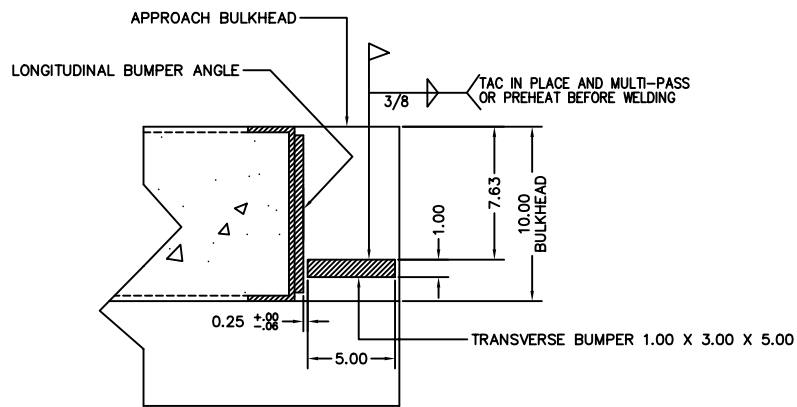
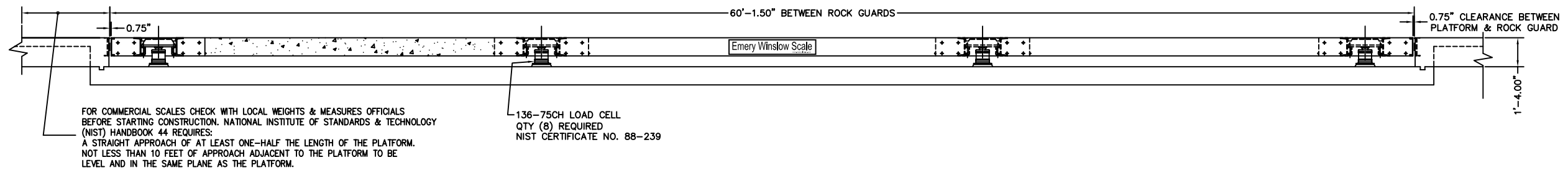
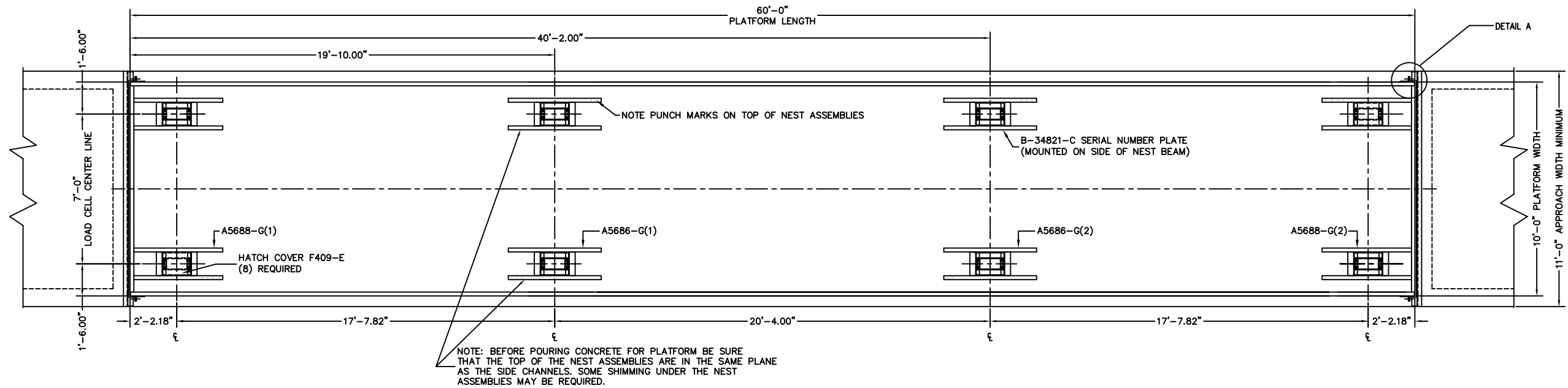
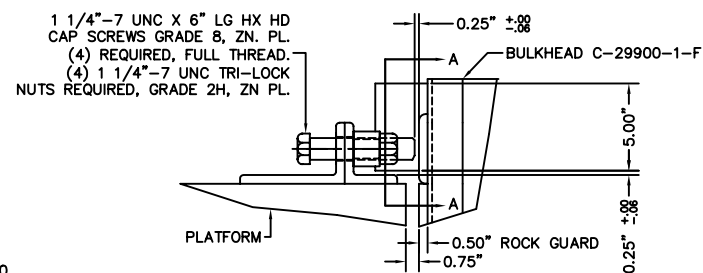


PRELIMINARY NOT FOR CONSTRUCTION

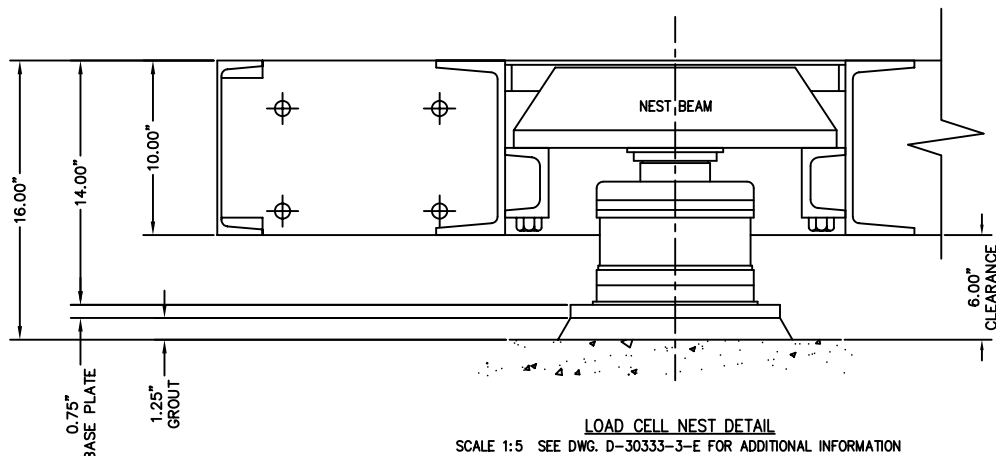


SECTION A-A FROM DETAIL A
SCALE 1:5 ROTATED 90°
STRIKERPLATE & CHECK BOLT NOT SHOWN. TYPICAL AT FOUR CORNERS.



DETAIL A
SCALE 1:5

- NOTES:
- A3995-D SLAB FOUNDATION
 - A3164-5-D FOOTING FOUNDATION
 - A6418-1/13 SCALE PLATFORM ASSY. & INSTAL INSTR.
 - D-30333-3-E NEST ASSEMBLY DETAIL
 - B-29932-C ANCHOR BOLT INSTALLATION
 - F987-D LOAD CELL INSTALLATION & ALIGNMENT
 - B-30740-4 HYDRAULIC JACK POSITIONS & SEQUENCES
 - B-33069-G TUBING DIAGRAM
 - B-30752-4 TARE PRESSURE & GAUGING REPORT
 - SERIES 9000 INSTRUCTION MANUAL
 - NTEP #89-014P
 - CLC = 58,000 LB
1. CONCRETE REQUIRED TO POUR PLATFORM IS 18 CUBIC YARDS. (MINIMUM CONCRETE STRENGTH IS 5,000 PSI AT 28 DAYS.)



REVISION	DATE	BY	DESCRIPTION
H	07/05	CEM	REVISION UPDATES
G	06/04	CEM	REVISION UPDATES
F	03/02	CES	DETAIL A WAS DETAIL X
E	11/00	CES	OVERALL SCALE CORRECTED: 1:30 WAS N.T.S.
D	3/00	CES	PUNCHMARKS CORRECTED
C	3/00	CES	BULKHEAD REVISED
B	7/98	CES	DIM CORRECTED TO SCALE
A	7/98	CES	DIM CORRECTED
LTR			REVISION

ALL SHARP CORNERS AND EDGES TO BE BROKEN

UNLESS OTHERWISE SPECIFIED DIMENSIONS ARE IN INCHES

MACHINING FABRICATION

±.00

±.13

±.005

±.005

THIS DRAWING IS THE PROPERTY OF EMERY WINSLOW SCALE COMPANY, SEYMOUR, CONNECTICUT. THE INFORMATION CONTAINED HEREIN IS CONFIDENTIAL AND IS NOT TO BE USED OR DISSEMINATED TO OTHERS WITHOUT THE EXPRESS WRITTEN CONSENT OF EMERY WINSLOW SCALE COMPANY.

FULL SIZE PLOT D-24X36	
EMERY WINSLOW SCALE COMPANY	
SEYMOUR, CT	TERRE HAUTE, IN.
U.S.A.	
ASSEMBLY LAYOUT	
MODEL 94-10060 60' X 10'	
10" CONCRETE DECK	
SCALE	FIRST USED ON DRAWING NO.
1:30	A3163-5
REV.	H