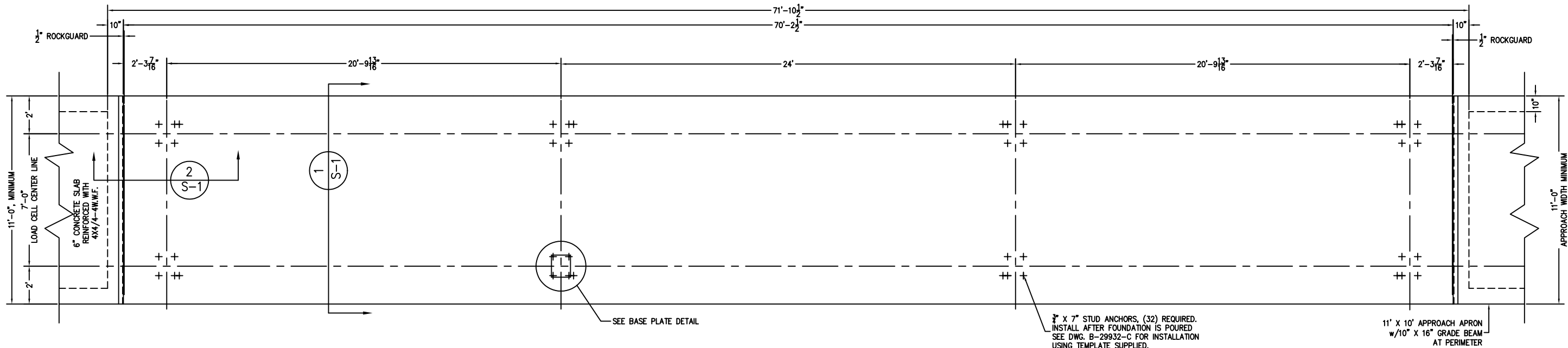
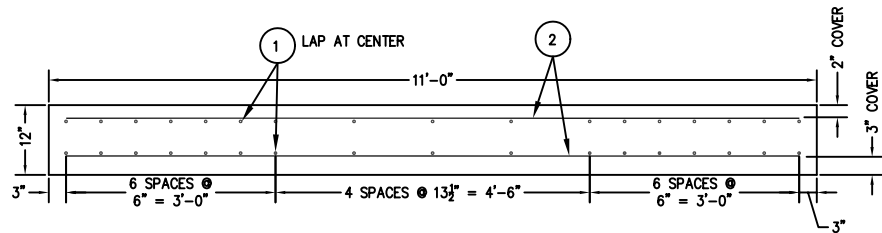
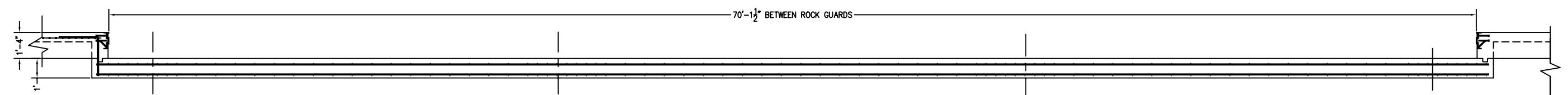


PRELIMINARY NOT FOR CONSTRUCTION

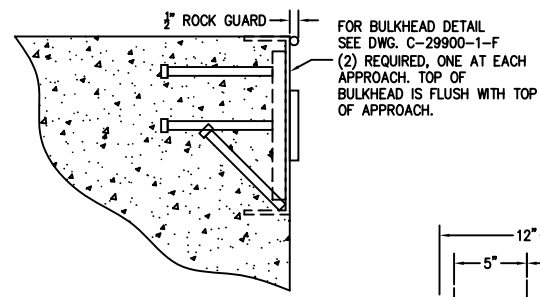


3/8" X 7" STUD ANCHORS, (32) REQUIRED. INSTALL AFTER FOUNDATION IS POURED SEE DWG. B-29932-C FOR INSTALLATION USING TEMPLATE SUPPLIED.

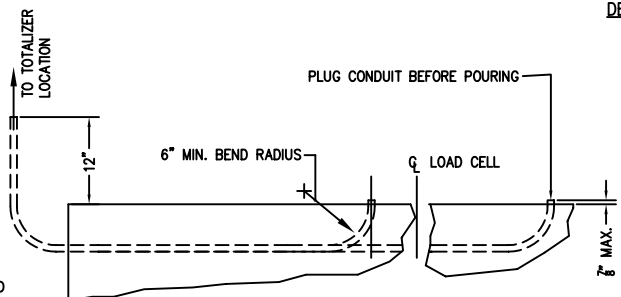
11' X 10' APPROACH APRON w/10" X 16" GRADE BEAM AT PERIMETER



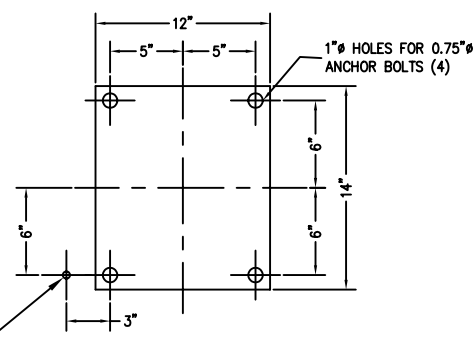
SECTION 1 SCALE 1:15



DETAIL OF BULKHEAD SCALE 1:5



SECTION THRU SHORT 1/2" PVC CONDUIT (8) REQ. SCALE 1:12 CONTINUOUS RUN FROM LOAD CELL TO TOTALIZER LOCATION



LOAD CELL BASE PLATE LAYOUT SEE DWG B-29932-C FOR DRILLING JIG; SCALE 1:6

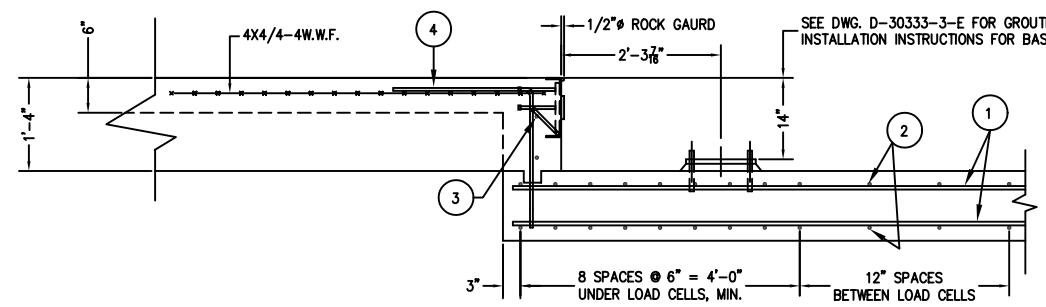
1/2" PVC CONDUIT FROM LOAD CELL TO TOTALIZER LOCATION (8) PLACES ACCURATE LOCATION REQUIRED.

FOR NON COMMERCIAL SCALES PROVIDE AN APPROACH OF 2 FEET MINIMUM LENGTH WHICH IS LEVEL AND IN SAME PLANE AS THE PLATFORM.

FOR COMMERCIAL SCALES CHECK WITH LOCAL WEIGHTS AND MEASURES OFFICIALS BEFORE STARTING CONSTRUCTIONS. NATIONAL INSTITUTE OF STANDARDS AND TECHNOLOGY (NIST) HANDBOOK 44 REQUIRES:
 A.) A STRAIGHT APPROACH OF AT LEAST ONE-HALF THE LENGTH OF THE PLATFORM.
 B.) NOT LESS THAN 10 FEET OF APPROACH ADJACENT TO THE PLATFORM TO BE CONSTRUCTED OF CONCRETE OR SIMILAR DURABLE MATERIAL AND BE LEVEL AND IN THE SAME PLANE AS THE PLATFORM.

- NOTES:
- CONCRETE STRENGTH: 4,000 PSI @ 28 DAYS
 - REINFORCING ROD: GRADE 60, 60,000 PSI, ASTM A615
 - SOIL BEARING IS ASSUMED TO BE 2,000 LBS/SQ FT. TO BE VERIFIED IN THE FIELD.
 - SLAB TO BE FLAT WITHIN 1/4" & LEVEL WITHIN 1/8" PER 10 FT.
 - APPROACH COPING(BULKHEAD) TO BE ON A COMMON PLANE WITHIN 1/4".
 - TOP OF REBAR MUST BE PLACED TO CLEAR THE ANCHOR BOLTS. ANCHOR BOLTS ARE TO BE INSTALLED AFTER FOUNDATION HAS CURED.
 - SEE SPEC. A499-364-2 FOR ON SITE SUBSURFACE CONDITIONS.
 - THE LENGTH FOR REBAR NO. 1 IS MINIMUM FOR 68 PIECES LAPPED. LONGER LAPS AND/OR PIECES MAY BE USED. MINIMUM LAP IS 26".

REFERENCE DRAWINGS:
 D-A3161-1 OUTLINE ARRANGEMENT
 B-29932-C ANCHOR BOLT INSTALLATION
 C-29900-1-F BULKHEAD DETAIL



SECTION 2 SCALE 1:15

MATERIAL REQUIREMENTS		TOTAL WT. OF REBAR		4649
CONCRETE:				
APPROACHES	6 CU. YDS	4	4'-0" 2'-0"	53
FOUNDATION	30 CU. YDS	3	4 5 10'-6"	44
REINFORCING:		2	176 5 10'-6"	1928
REBAR	4649 LB	1	68 5 37'-0" (26" MINIMUM OVERLAP)	2624
4X4/4-4WWF	220 SQ FT			
PIECE NO.	QTY	BAR SIZE	LENGTH & DESCRIPTION	WT.

REV.	DESCRIPTION	DATE	BY
F	FRACTIONAL IN'S WERE DEC., NOTE 7 ADDED	07/05	CEM
E	REV. UPDATED	05/02	CES
D	REV. UPDATED	02/02	CES
C	COMPLETE UPDATE	12/01	CES
B	DWG AND TEXT CHANGED	06/00	CES
A	BULKHEAD REVISED	03/00	CES
LTR	REVISION	DATE	BY

ALL SHARP CORNERS AND EDGES TO BE BROKEN UNLESS OTHERWISE SPECIFIED DIMENSIONS ARE IN INCHES MACHINING FABRICATION ±.005 ±.13

THIS DRAWING IS THE PROPERTY OF EMERY WINSLOW SCALE COMPANY SEYMOUR, CONNECTICUT. THE INFORMATION CONTAINED HEREIN IS CONFIDENTIAL AND IS NOT TO BE USED OR DISSEMINATED TO OTHERS WITHOUT THE EXPRESS WRITTEN CONSENT OF EMERY WINSLOW SCALE COMPANY.

SCALE: 1:30 FIRST USED ON: A-3920 DRAWING NO.: D-A3994 REV. F

EMERY WINSLOW SCALE COMPANY
 SEYMOUR, CT U.S.A. TERRE HAUTE, IN.

FOUNDATION PLAN 70' X 10' MODEL 94-10070 SLAB CONSTRUCTION

FULL SIZE PLOT D-24X36