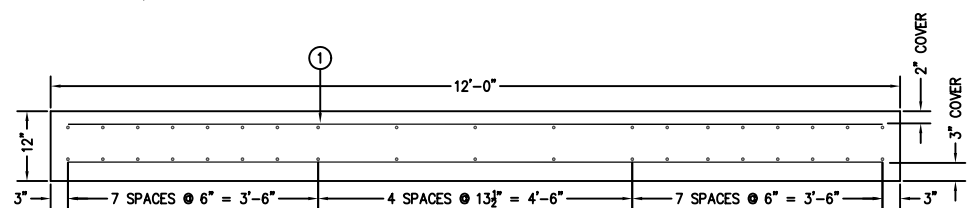
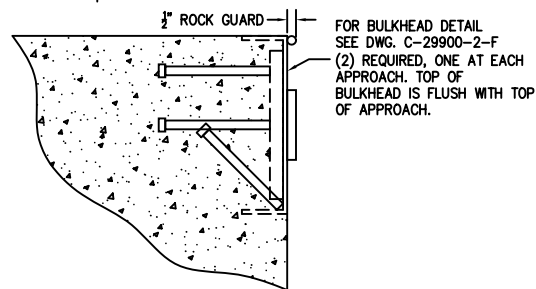
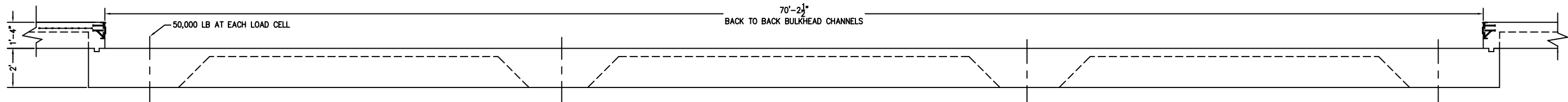
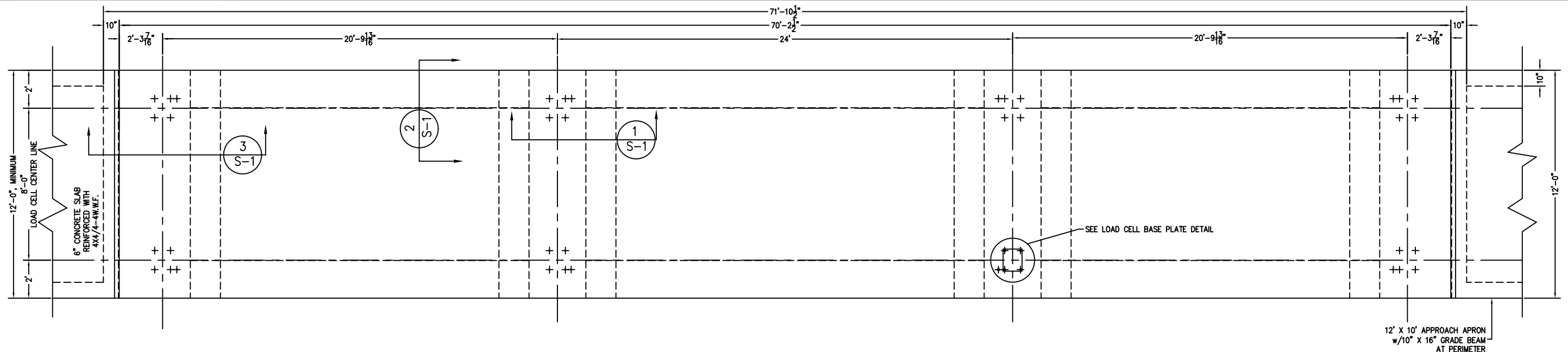
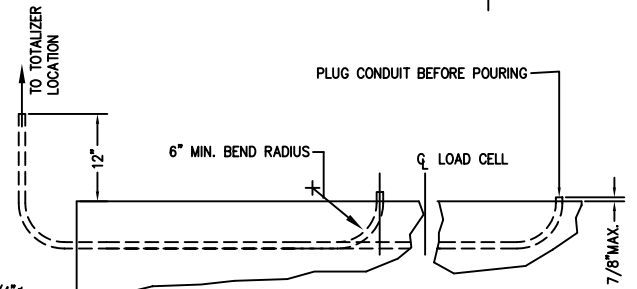


PRELIMINARY NOT FOR CONSTRUCTION



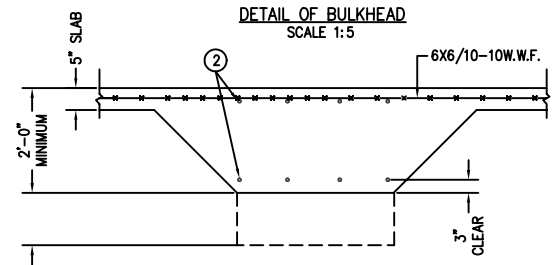
ALTERNATE SLAB FOUNDATION
SEE DWG. D-70145-D FOR FULL DETAILS, SCALE: 1:15



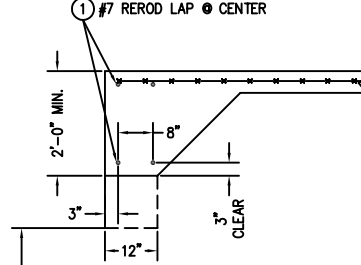
SECTION THRU SHORT
1/2" PVC CONDUIT (8) REQ.
SCALE 1:12
CONTINUOUS RUN FROM LOAD CELL TO TOTALIZER LOCATION

FOR NON COMMERCIAL SCALES PROVIDE AN APPROACH OF 2 FEET MINIMUM LENGTH WHICH IS LEVEL AND IN SAME PLANE AS THE PLATFORM.
FOR COMMERCIAL SCALES CHECK WITH LOCAL WEIGHTS AND MEASURES OFFICIALS BEFORE STARTING CONSTRUCTIONS. NATIONAL INSTITUTE OF STANDARDS AND TECHNOLOGY (NIST) HANDBOOK 44 REQUIRES:
A.) A STRAIGHT APPROACH OF AT LEAST ONE-HALF THE LENGTH OF THE PLATFORM.
B.) NOT LESS THAN 10 FEET OF APPROACH ADJACENT TO THE PLATFORM TO BE CONSTRUCTED OF CONCRETE OR SIMILAR DURABLE MATERIAL AND BE LEVEL AND IN THE SAME PLANE AS THE PLATFORM.

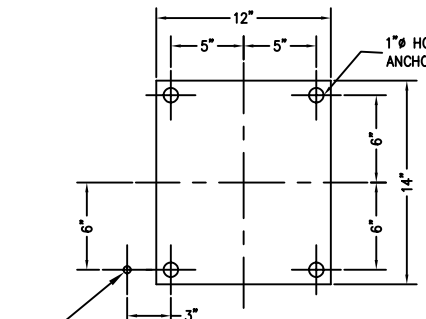
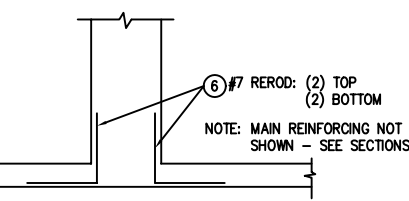
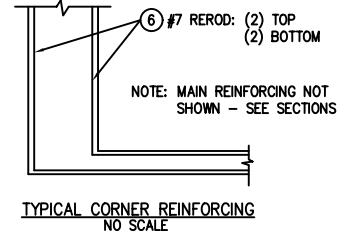
- NOTES:
- CONCRETE STRENGTH: 4,000 PSI @ 28 DAYS
REINFORCING ROD: GRADE 60, 60,000 PSI, ASTM 615
 - SOIL BEARING IS ASSUMED TO BE 2,000 LBS/SQ FT. TO BE VERIFIED IN THE FIELD.
 - SLAB TO BE FLAT WITHIN 1/4" & LEVEL WITHIN 1/8" PER 10 FT.
 - APPROACH COPING (BULKHEAD) TO BE ON A COMMON PLANE WITHIN 1/4".
 - TOP OF REBAR MUST BE PLACED TO CLEAR THE ANCHOR BOLTS. ANCHOR BOLTS ARE TO BE INSTALLED AFTER FOUNDATION HAS CURED.
 - SEE SPEC. A499-364-1 FOR ON SITE SUBSURFACE CONDITIONS.
 - THE LENGTH FOR REBAR NO. 1 IS MINIMUM FOR 16 PIECES LAPPED. LONGER LAPS AND/OR PIECES MAY BE USED. MINIMUM LAP IS 36".



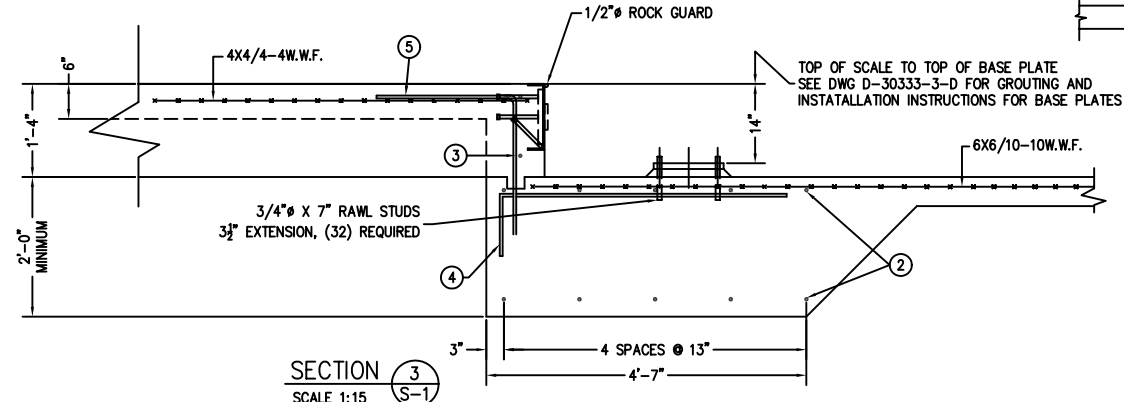
SECTION 1
SCALE 1:20



SECTION 2
SCALE 1:20



LOAD CELL BASE PLATE LAYOUT
SEE DWG B-29932-C FOR DRILLING JIG; SCALE 1:6



SECTION 3
SCALE 1:15

MATERIAL REQUIREMENTS		TOTAL WT. OF REBAR		2620
CONCRETE:	APPROACHES	7 CU. YDS		
	FOUNDATION	39 CU. YDS		
REINFORCING:	REBAR	2620 LB		
	4X4/4-4WWF	240 SQ FT		
	6X6/10-10WWF	848 SQ FT		
PIECE NO.	QTY	BAR SIZE	LENGTH & DESCRIPTION	WT.
6	32	7	6'-0" 3'-0"	392
5	22	4	4'-0" 2'-0"	59
4	22	4	5'-0" 1'-0"	74
3	4	4	11'-6"	31
2	36	7	11'-6"	846
1	16	7	37'-3" (36" MINIMUM OVERLAP)	1218

REF: OUTLINE ARRANGEMENT DWG. D-70144-E FULL SIZE PLOT D-24X36

D	FRACTIONAL IN. WAS DEC. REV.'S UPDATED	06/05	CEM	ALL SHARP CORNERS AND EDGES TO BE BROKEN
C	NOTE 7 ADDED, DETAILS UPDATED	07/04	CEM	
B	TITLE BL. SCALE & MATL. REQ. BOX UPDATED	01/02	CES	UNLESS OTHERWISE SPECIFIED DIMENSIONS ARE IN INCHES
A	BULKHEAD UPDATED	11/99	CES	MACHINING FABRICATION ± .005 ± .03
LTR	REVISION	DATE	BY	DRAWN CES DATE 09/14/98
THIS DRAWING IS THE PROPERTY OF EMERY WINSLOW SCALE COMPANY SEYMOUR, CONNECTICUT. THE INFORMATION CONTAINED HEREIN IS CONFIDENTIAL AND IS NOT TO BE USED OR DISSEMINATED TO OTHERS WITHOUT THE EXPRESS WRITTEN CONSENT OF EMERY WINSLOW SCALE COMPANY.				<p>EMERY WINSLOW SCALE COMPANY SEYMOUR, CT U.S.A. TERRE HAUTE, IN.</p> <p>FOUNDATION PLAN 70' X 11' MODEL 94-10070-11 A.G. WITH FOOTINGS</p> <p>SCALE: FIRST USED ON 1:30 DRAWING NO. D-70146 REV. D</p>