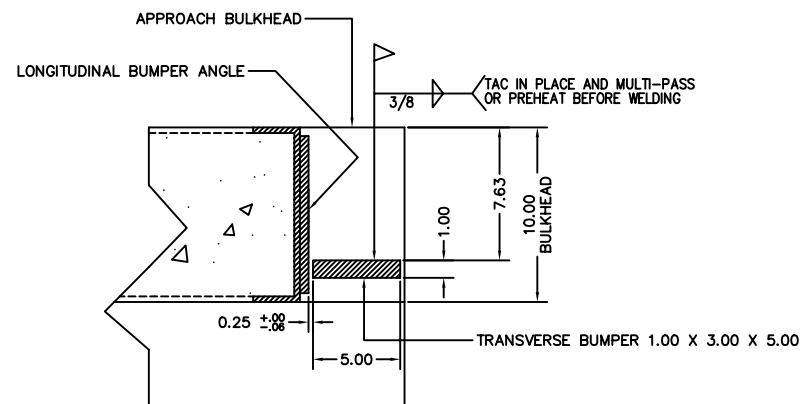
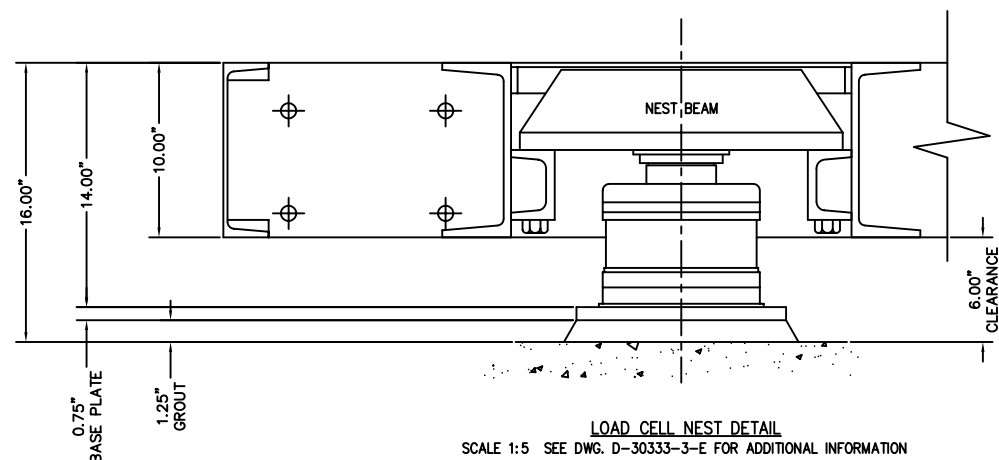


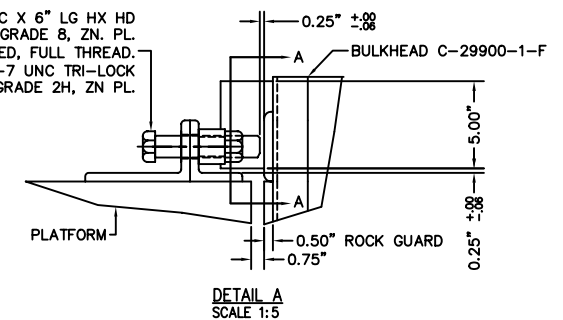
FOR COMMERCIAL SCALES CHECK WITH LOCAL WEIGHTS & MEASURES OFFICIALS BEFORE STARTING CONSTRUCTION. NATIONAL INSTITUTE OF STANDARDS & TECHNOLOGY (NIST) HANDBOOK 44 REQUIRES:
A STRAIGHT APPROACH OF AT LEAST ONE-HALF THE LENGTH OF THE PLATFORM. NOT LESS THAN 10 FEET OF APPROACH ADJACENT TO THE PLATFORM TO BE CONSTRUCTED OF CONCRETE OR SIMILAR DURABLE MATERIAL AND BE LEVEL AND IN THE SAME PLANE AS THE PLATFORM.

136-75CH LOAD CELL
QTY (10) REQUIRED
NIST CERTIFICATE NO. 88-239

- NOTES:
- D-70917-B SLAB FOUNDATION
 - D-70922 FOOTER FOUNDATION
 - B-70592-1/13 SCALE PLATFORM ASSY. & INSTAL. INSTR.
 - D-30333-3-E NEST ASSEMBLY DETAIL
 - B-29932-C ANCHOR BOLT INSTALLATION
 - F987-D LOAD CELL INSTALLATION & ALIGNMENT
 - B-30740-5 HYDRAULIC JACK POSITIONS & SEQUENCES
 - B-33069-3-G TUBING DIAGRAM
 - B-30752-5 TARE PRESSURE & GAUGING REPORT
 - SERIES 9000 INSTRUCTION MANUAL
 - NTEP #89-014P
 - CLC = 58,000 LB
1. CONCRETE REQUIRED TO POUR PLATFORM IS 25 CUBIC YARDS (MINIMUM CONCRETE STRENGTH IS 5,000 PSI AT 28 DAYS.)



1 1/4"-7 UNC X 6" LG HX HD CAP SCREWS GRADE 8, ZN. PL. (4) REQUIRED, FULL THREAD.
(4) 1 1/4"-7 UNC TRI-LOCK NUTS REQUIRED, GRADE 2H, ZN PL.



REV	DESCRIPTION	DATE	BY	CHECKED	DATE
C	REFERENCE DWG REV'S UPDATED	07/05	CEM		
B	REFERENCE DWG REV'S UPDATED	08/04	CEM		
A	REFERENCE DWG REV'S UPDATED	10/02	CEM		
LTR	REVISION	DATE	BY	DATE	

ALL SHARP CORNERS AND EDGES TO BE BROKEN UNLESS OTHERWISE SPECIFIED DIMENSIONS ARE IN INCHES

MACHINING ±.005 ±.010 ±.015 ±.020 ±.030 ±.040 ±.050 ±.060 ±.070 ±.080 ±.090 ±.100 ±.125 ±.150 ±.175 ±.200 ±.250 ±.300 ±.350 ±.400 ±.450 ±.500 ±.600 ±.700 ±.800 ±.900 ±.1000 ±.1250 ±.1500 ±.1750 ±.2000 ±.2500 ±.3000 ±.3500 ±.4000 ±.4500 ±.5000 ±.6000 ±.7000 ±.8000 ±.9000 ±.10000 ±.12500 ±.15000 ±.17500 ±.20000 ±.25000 ±.30000 ±.35000 ±.40000 ±.45000 ±.50000 ±.60000 ±.70000 ±.80000 ±.90000 ±.100000 ±.125000 ±.150000 ±.175000 ±.200000 ±.250000 ±.300000 ±.350000 ±.400000 ±.450000 ±.500000 ±.600000 ±.700000 ±.800000 ±.900000 ±.1000000 ±.1250000 ±.1500000 ±.1750000 ±.2000000 ±.2500000 ±.3000000 ±.3500000 ±.4000000 ±.4500000 ±.5000000 ±.6000000 ±.7000000 ±.8000000 ±.9000000 ±.10000000 ±.12500000 ±.15000000 ±.17500000 ±.20000000 ±.25000000 ±.30000000 ±.35000000 ±.40000000 ±.45000000 ±.50000000 ±.60000000 ±.70000000 ±.80000000 ±.90000000 ±.100000000 ±.125000000 ±.150000000 ±.175000000 ±.200000000 ±.250000000 ±.300000000 ±.350000000 ±.400000000 ±.450000000 ±.500000000 ±.600000000 ±.700000000 ±.800000000 ±.900000000 ±.1000000000 ±.1250000000 ±.1500000000 ±.1750000000 ±.2000000000 ±.2500000000 ±.3000000000 ±.3500000000 ±.4000000000 ±.4500000000 ±.5000000000 ±.6000000000 ±.7000000000 ±.8000000000 ±.9000000000 ±.10000000000 ±.12500000000 ±.15000000000 ±.17500000000 ±.20000000000 ±.25000000000 ±.30000000000 ±.35000000000 ±.40000000000 ±.45000000000 ±.50000000000 ±.60000000000 ±.70000000000 ±.80000000000 ±.90000000000 ±.100000000000 ±.125000000000 ±.150000000000 ±.175000000000 ±.200000000000 ±.250000000000 ±.300000000000 ±.350000000000 ±.400000000000 ±.450000000000 ±.500000000000 ±.600000000000 ±.700000000000 ±.800000000000 ±.900000000000 ±.1000000000000 ±.1250000000000 ±.1500000000000 ±.1750000000000 ±.2000000000000 ±.2500000000000 ±.3000000000000 ±.3500000000000 ±.4000000000000 ±.4500000000000 ±.5000000000000 ±.6000000000000 ±.7000000000000 ±.8000000000000 ±.9000000000000 ±.10000000000000 ±.12500000000000 ±.15000000000000 ±.17500000000000 ±.20000000000000 ±.25000000000000 ±.30000000000000 ±.35000000000000 ±.40000000000000 ±.45000000000000 ±.50000000000000 ±.60000000000000 ±.70000000000000 ±.80000000000000 ±.90000000000000 ±.100000000000000 ±.125000000000000 ±.150000000000000 ±.175000000000000 ±.200000000000000 ±.250000000000000 ±.300000000000000 ±.350000000000000 ±.400000000000000 ±.450000000000000 ±.500000000000000 ±.600000000000000 ±.700000000000000 ±.800000000000000 ±.900000000000000 ±.1000000000000000 ±.1250000000000000 ±.1500000000000000 ±.1750000000000000 ±.2000000000000000 ±.2500000000000000 ±.3000000000000000 ±.3500000000000000 ±.4000000000000000 ±.4500000000000000 ±.5000000000000000 ±.6000000000000000 ±.7000000000000000 ±.8000000000000000 ±.9000000000000000 ±.10000000000000000 ±.12500000000000000 ±.15000000000000000 ±.17500000000000000 ±.20000000000000000 ±.25000000000000000 ±.30000000000000000 ±.35000000000000000 ±.40000000000000000 ±.45000000000000000 ±.50000000000000000 ±.60000000000000000 ±.70000000000000000 ±.80000000000000000 ±.90000000000000000 ±.100000000000000000 ±.125000000000000000 ±.150000000000000000 ±.175000000000000000 ±.200000000000000000 ±.250000000000000000 ±.300000000000000000 ±.350000000000000000 ±.400000000000000000 ±.450000000000000000 ±.500000000000000000 ±.600000000000000000 ±.700000000000000000 ±.800000000000000000 ±.900000000000000000 ±.1000000000000000000 ±.1250000000000000000 ±.1500000000000000000 ±.1750000000000000000 ±.2000000000000000000 ±.2500000000000000000 ±.3000000000000000000 ±.3500000000000000000 ±.4000000000000000000 ±.4500000000000000000 ±.5000000000000000000 ±.6000000000000000000 ±.7000000000000000000 ±.8000000000000000000 ±.9000000000000000000 ±.10000000000000000000 ±.12500000000000000000 ±.15000000000000000000 ±.17500000000000000000 ±.20000000000000000000 ±.25000000000000000000 ±.30000000000000000000 ±.35000000000000000000 ±.40000000000000000000 ±.45000000000000000000 ±.50000000000000000000 ±.60000000000000000000 ±.70000000000000000000 ±.80000000000000000000 ±.90000000000000000000 ±.100000000000000000000 ±.125000000000000000000 ±.150000000000000000000 ±.175000000000000000000 ±.200000000000000000000 ±.250000000000000000000 ±.300000000000000000000 ±.350000000000000000000 ±.400000000000000000000 ±.450000000000000000000 ±.500000000000000000000 ±.600000000000000000000 ±.700000000000000000000 ±.800000000000000000000 ±.900000000000000000000 ±.1000000000000000000000 ±.1250000000000000000000 ±.1500000000000000000000 ±.1750000000000000000000 ±.2000000000000000000000 ±.2500000000000000000000 ±.3000000000000000000000 ±.3500000000000000000000 ±.4000000000000000000000 ±.4500000000000000000000 ±.5000000000000000000000 ±.6000000000000000000000 ±.7000000000000000000000 ±.8000000000000000000000 ±.9000000000000000000000 ±.10000000000000000000000 ±.12500000000000000000000 ±.15000000000000000000000 ±.17500000000000000000000 ±.20000000000000000000000 ±.25000000000000000000000 ±.30000000000000000000000 ±.35000000000000000000000 ±.40000000000000000000000 ±.45000000000000000000000 ±.50000000000000000000000 ±.60000000000000000000000 ±.70000000000000000000000 ±.80000000000000000000000 ±.90000000000000000000000 ±.100000000000000000000000 ±.125000000000000000000000 ±.150000000000000000000000 ±.175000000000000000000000 ±.200000000000000000000000 ±.250000000000000000000000 ±.300000000000000000000000 ±.350000000000000000000000 ±.400000000000000000000000 ±.450000000000000000000000 ±.500000000000000000000000 ±.600000000000000000000000 ±.700000000000000000000000 ±.800000000000000000000000 ±.900000000000000000000000 ±.1000000000000000000000000 ±.1250000000000000000000000 ±.1500000000000000000000000 ±.1750000000000000000000000 ±.2000000000000000000000000 ±.2500000000000000000000000 ±.3000000000000000000000000 ±.3500000000000000000000000 ±.4000000000000000000000000 ±.4500000000000000000000000 ±.5000000000000000000000000 ±.6000000000000000000000000 ±.7000000000000000000000000 ±.8000000000000000000000000 ±.9000000000000000000000000 ±.10000000000000000000000000 ±.12500000000000000000000000 ±.15000000000000000000000000 ±.17500000000000000000000000 ±.20000000000000000000000000 ±.25000000000000000000000000 ±.30000000000000000000000000 ±.35000000000000000000000000 ±.40000000000000000000000000 ±.45000000000000000000000000 ±.50000000000000000000000000 ±.60000000000000000000000000 ±.70000000000000000000000000 ±.80000000000000000000000000 ±.90000000000000000000000000 ±.100000000000000000000000000 ±.125000000000000000000000000 ±.150000000000000000000000000 ±.175000000000000000000000000 ±.200000000000000000000000000 ±.250000000000000000000000000 ±.300000000000000000000000000 ±.350000000000000000000000000 ±.400000000000000000000000000 ±.450000000000000000000000000 ±.500000000000000000000000000 ±.600000000000000000000000000 ±.700000000000000000000000000 ±.800000000000000000000000000 ±.900000000000000000000000000 ±.1000000000000000000000000000 ±.1250000000000000000000000000 ±.1500000000000000000000000000 ±.1750000000000000000000000000 ±.2000000000000000000000000000 ±.2500000000000000000000000000 ±.3000000000000000000000000000 ±.3500000000000000000000000000 ±.4000000000000000000000000000 ±.4500000000000000000000000000 ±.5000000000000000000000000000 ±.6000000000000000000000000000 ±.7000000000000000000000000000 ±.8000000000000000000000000000 ±.9000000000000000000000000000 ±.10000000000000000000000000000 ±.12500000000000000000000000000 ±.15000000000000000000000000000 ±.17500000000000000000000000000 ±.20000000000000000000000000000 ±.25000000000000000000000000000 ±.30000000000000000000000000000 ±.35000000000000000000000000000 ±.40000000000000000000000000000 ±.45000000000000000000000000000 ±.50000000000000000000000000000 ±.60000000000000000000000000000 ±.70000000000000000000000000000 ±.80000000000000000000000000000 ±.90000000000000000000000000000 ±.100000000000000000000000000000 ±.125000000000000000000000000000 ±.150000000000000000000000000000 ±.175000000000000000000000000000 ±.200000000000000000000000000000 ±.250000000000000000000000000000 ±.300000000000000000000000000000 ±.350000000000000000000000000000 ±.400000000000000000000000000000 ±.450000000000000000000000000000 ±.500000000000000000000000000000 ±.600000000000000000000000000000 ±.700000000000000000000000000000 ±.800000000000000000000000000000 ±.900000000000000000000000000000 ±.1000000000000000000000000000000 ±.1250000000000000000000000000000 ±.1500000000000000000000000000000 ±.1750000000000000000000000000000 ±.2000000000000000000000000000000 ±.2500000000000000000000000000000 ±.3000000000000000000000000000000 ±.3500000000000000000000000000000 ±.4000000000000000000000000000000 ±.4500000000000000000000000000000 ±.5000000000000000000000000000000 ±.6000000000000000000000000000000 ±.7000000000000000000000000000000 ±.8000000000000000000000000000000 ±.9000000000000000000000000000000 ±.10000000000000000000000000000000 ±.12500000000000000000000000000000 ±.15000000000000000000000000000000 ±.17500000000000000000000000000000 ±.20000000000000000000000000000000 ±.25000000000000000000000000000000 ±.30000000000000000000000000000000 ±.35000000000000000000000000000000 ±.40000000000000000000000000000000 ±.45000000000000000000000000000000 ±.50000000000000000000000000000000 ±.60000000000000000000000000000000 ±.70000000000000000000000000000000 ±.80000000000000000000000000000000 ±.90000000000000000000000000000000 ±.100000000000000000000000000000000 ±.125000000000000000000000000000000 ±.150000000000000000000000000000000 ±.175000000000000000000000000000000 ±.200000000000000000000000000000000 ±.250000000000000000000000000000000 ±.300000000000000000000000000000000 ±.350000000000000000000000000000000 ±.400000000000000000000000000000000 ±.450000000000000000000000000000000 ±.500000000000000000000000000000000 ±.600000000000000000000000000000000 ±.700000000000000000000000000000000 ±.800000000000000000000000000000000 ±.900000000000000000000000000000000 ±.1000000000000000000000000000000000 ±.1250000000000000000000000000000000 ±.1500000000000000000000000000000000 ±.1750000000000000000000000000000000 ±.2000000000000000000000000000000000 ±.2500000000000000000000000000000000 ±.3000000000000000000000000000000000 ±.3500000000000000000000000000000000 ±.4000000000000000000000000000000000 ±.4500000000000000000000000000000000 ±.5000000000000000000000000000000000 ±.6000000000000000000000000000000000 ±.7000000000000000000000000000000000 ±.8000000000000000000000000000000000 ±.9000000000000000000000000000000000 ±.10000000000000000000000000000000000 ±.12500000000000000000000000000000000 ±.15000000000000000000000000000000000 ±.17500000000000000000000000000000000 ±.20000000000000000000000000000000000 ±.25000000000000000000000000000000000 ±.30000000000000000000000000000000000 ±.35000000000000000000000000000000000 ±.40000000000000000000000000000000000 ±.45000000000000000