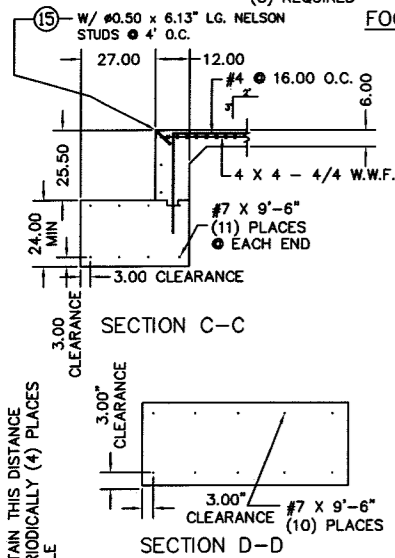
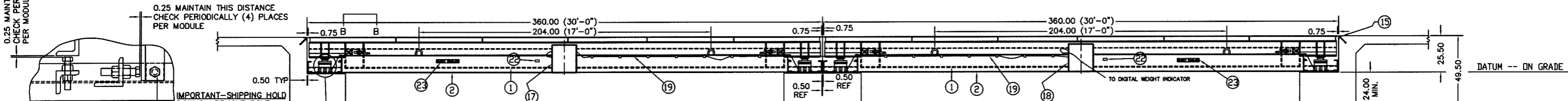


FOOTING & APPROACH PLAN  
SCALE: N.T.S.

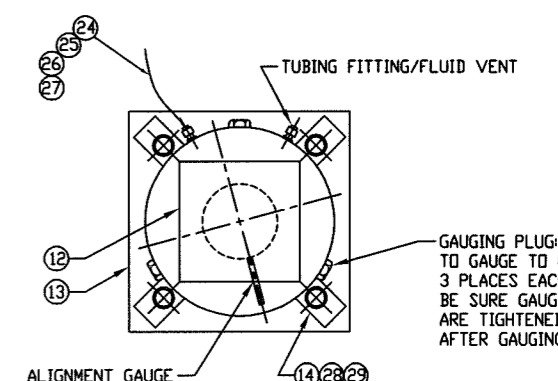


0.25 MAINTAIN THIS DISTANCE CHECK PERIODICALLY (4) PLACES PER MODULE

0.25 MAINTAIN THIS DISTANCE CHECK PERIODICALLY (4) PLACES PER MODULE



SIDE VIEW



TYPICAL TOP VIEW OF CELL ON BASE PLATE (VIEW ROTATED 90°)  
FIELD WELD BASE PLATE TO LOWER PLATE AFTER  
LOAD CELL IS PROPERLY CENTERED WITH CENTERING RING  
SCALE: 1/5

ITEM NO.	DESCRIPTION	QTY	MATERIAL	UNIT WT.	PART NO.	SIZE	WT.	ITEM NO.	DESCRIPTION	QTY	MATERIAL	UNIT WT.	PART NO.	SIZE	WT.
1	WEIGHBRIDGE	2	SEE ASS'Y	5273	A6024		10546	16	ANCHOR BOLT	8	CS ZN PL	-	-	Ø1.00 X 12.00" LONG OTHERS	-
2	OUTSIDE FRAME	2	SEE ASS'Y	3166	A3362		6332	17	TOTALIZER ENCLOSURE ASSY	1	-	-	D-34474-5	W/O SUMMING BOARD	-
3	REMOVABLE PANEL	2	SEE ASS'Y	1003	A5533-X		2006	18	TOTALIZER ENCLOSURE ASSEMBLY	1	-	-	D-34474-6	W/ SUMMING BOARD	-
4	FIXED PANEL	10	SEE ASS'Y	1050	A5510-X		10500	19	TOTALIZER CONN. CABLE	1	-	-	-	35' LONG WITH CONNECTOR PLUGS	-
5	LOAD CELL	8	SEE ASS'Y	65	D-29547	136-75-CH; NTEP NP. 88-239-P	520	20	ENCLOSURE MNTG. SCREW	12	S.S.	-	-	0.25-20 X 0.63 LONG PAN HEAD SCREW	-
6	CENTERING RING	8	CS ZN PL	-	B-29871-E		-	21	WASHER	12	S.S./NYLON	-	-	Ø0.25 FOUR INTERNAL WASHERS NYLON	-
7	SHIM	A/R	S.S.	-	A-29869-1		-	22	SERIAL NO. PLATE	2	SS	-	-	B-34821-A	-
8	SHIM	A/R	S.S.	-	A-29869-2		-	23	SIGN	4	-	-	-	#63209	5' x 23'
9	HX HD CAP SCREW	32	CS	-	-	0.38-16UNC X 1.25	-	24	HYDRAULIC TUBING	A/R	COPPER	-	-	-	1/8" O.D.
10	HOLD-DOWN BOLT & NUT	8	CS	-	-	Ø1.00 X 3.50" LG.	-	25	NUT	16	S.S.	-	-	SWAGelok 202-1	-
11	SHIPPING SPACER	8	CS	2.5	F985	1.00 X 3.00 X 3.00	20	26	FRONT FERRULE	16	S.S.	-	-	SWAGelok 203-1	-
12	UPPER LOAD PLATE	8	ASTM A36	8	F839		64	27	BACK FERRULE	16	S.S.	-	-	SWAGelok 204-1	-
13	LOWER BASE PLATE	8	ASTM A36	34	F911		272	28	HEX HEAD CAP SCREW	32	S.S.	-	-	-	0.50-13UNC X 1.25" LONG
14	CLAMP	32	CS ZN PL	-	A-29870		-	29	FLAT WASHER	64	S.S.	-	-	-	Ø0.50 -- (2) PER L/C CLAMP
15	BULKHEAD	2	ASTM A36	-	-	0.25 X 3.000 X 3.00 ANGLE	-							BY OTHERS	-

ITEMS ABOVE ARE FACTORY INSTALLED, EXCEPT FOR NOS 15, 16 AND 19. CAP ALL S.G. CABLE PLUGS & ENCLOSURE SOCKETS WITH CAPS PROVIDED WHEN MOVING SCALE.

REFERENCE DRAWINGS:

- A5566 DECK PANEL INSTALLATION (WELDING REQ'D)
- D342 APPROACH PLAN (ALTERNATE)
- D-34474-5 TOTALIZER ENCLOSURE ASSEMBLY W/O SUMMING.
- D-34474-6 TOTALIZER ENCLOSURE ASSEMBLY W/ SUMMING.

NOTES:  
EMERY WINSLOW SCALE COMPANY WILL OPERATE PROPERLY WHEN INSTALLED IN ACCORD WITH OUR STANDARD SPECIFICATIONS. HOWEVER, THE PURCHASER IS CAUTIONED TO CHECK WITH THE PROPER REGULATORY AUTHORITIES AS TO ANY SPECIAL STATE OR OTHER REGULATORY REQUIREMENTS REGARDING FOOTING DEPTHS, CONSTRUCTIONS & APPROACHES WHICH MIGHT AFFECT DIMENSIONS SHOWN.

SCALE SHALL BE INSTALLED AT AN ELEVATION TO INSURE ADEQUATE DRAINAGE AWAY FROM SCALE.

FOOTINGS SHALL EXTEND TO A DEPTH NOT LESS THAN THE LOCAL FROST LINE. FOOTINGS SHOWN ARE RECOMMENDED FOR 4000 P.S.F. THE INSTALLER SHALL NOTIFY THE OWNER. THE OWNER SHALL THEN ARRANGE FOR DESIGN MODIFICATIONS TO SUIT THE INSTALLATION.

CONCRETE AND REINFORCING SHALL BE IN ACCORD WITH THE SPECIFICATIONS OF THE AMERICAN CONCRETE INSTITUTE HANDBOOK #318-77. CONCRETE COMPRESSIVE STRENGTH TO BE 3000 P.S.I. ON UNDISTURBED SOIL.

ON THE APPROACH END OR ENDS OF A VEHICLE SCALE INSTALLED IN ANY ONE LOCATION FOR A PERIOD OF SIX MONTHS OR MORE, THERE SHALL BE A STRAIGHT APPROACH AS FOLLOWS.

- A. AT LEAST THE WIDTH OF THE PLATFORM, AND
- B. AT LEAST ONE-HALF THE LENGTH OF THE PLATFORM BUT NOT REQUIRED TO BE MORE THAN 40 FEET, AND
- C. NOT LESS THAN 10 FEET OF ANY APPROACH ADJACENT TO THE PLATFORM SHALL BE CONSTRUCTED OF CONCRETE OR SIMILAR DURABLE MATERIAL TO INSURE THAT THIS PORTION REMAINS SMOOTH AND LEVEL AND IN THE SAME PLANE AS THE PLATFORM. HOWEVER, GRATING OF SUFFICIENT STRENGTH TO WITHSTAND ALL LOADS MAY BE INSTALLED IN THIS PORTION, AND FURTHER WHERE DEEMED NECESSARY FOR DRAINAGE PURPOSES, THE REMAINING PORTION OF THE APPROACH MAY SLOPE SLIGHTLY.

APPROACH COPING SHALL BE STRUCTURAL STEEL ANGLE, 0.25 X 3.00 X 3.00 WITH WELDED CONCRETE ANCHORS ON 4" CENTERS, MINIMUM. IT IS RECOMMENDED THAT THE OWNER ARRANGE TO HAVE FABRIC IMPREGNATED BELTING (OR SIMILAR DURABLE MATERIAL) INSTALLED, TO COVER THE GAP BETWEEN THE APPROACH COPING AND THE SCALE, TO MINIMIZE DEBRIS ENTERING SCALE.

DEAD LOAD PRESSURE AT EACH CELL = APPROX. 70 P.S.I. AFTER INSTALLING SCALE ON CONCRETE PIERS, CHECK PRESSURES ON TOTALIZER CELLS USING PRESSURE GAUGE. PRESSURE ON EACH CELL SHOULD BE APPROX. 70 P.S.I. IF PRESSURES ARE NOT ALIKE ON ALL CELLS OF EACH MODULE, SHIM AS REQUIRED TO CORRECT.

PRESSURE GAUGE IS LOCATED ON EACH TOTALIZER IN ENCLOSURE ON EACH MODULE.

TWO TOTALIZERS ARE CONNECTED BY A S.G. CABLE FITTED WITH END CONNECTOR PLUGS THAT GO INTO SOCKETS ON EACH ENCLOSURE, DIRECTLY ABOVE THE ISOLATION HOSES. THE CONNECTING S.G. CABLE IS TO BE STRUNG THROUGH THE LOOPS AS SHOWN ABOVE. THERE IS A SINGLE CONNECTOR SOCKET ON THE TOTALIZER WITH A SUMMING BOARD, LOCATED ABOVE THE CONNECTOR S.G. CABLE SOCKET. PLUG-IN THE DIGITAL INDICATOR S.G. CABLE THERE. DO NOT LET THE INDICATOR TOUCH THE GROUND, ELSE RUN IT THROUGH CONDUIT. DO NOT WELD ON OR AROUND SCALE WITH INDICATOR S.G. CABLE CONNECTED.

ALWAYS USE SPREADER BARS ON SLINGS/CHAINS WHEN LIFTING MODULES.

ENCLOSURE MOUNTING INSTRUCTIONS:  
REST ENCLOSURE ON SUPPORT PLATE. PUSH AGAINST BACKING PLATE & SET PUNCH MARKS FOR MOUNTING HOLES USING ENCLOSURE AS A TEMPLATE. DRILL AND TAP BACKING PLATE 1/4"-20UNC -- (6) PLACES. USE VIBRA-TITE. USE NYLON WASHERS FOR SCREWS ATTACHED FROM INSIDE ENCLOSURE. FACTORY INSTALLED.

ENCLOSURE MOUNTING INSTRUCTIONS:  
REST ENCLOSURE ON SUPPORT PLATE. PUSH AGAINST BACKING PLATE & SET PUNCH MARKS FOR MOUNTING HOLES USING ENCLOSURE AS A TEMPLATE. DRILL AND TAP BACKING PLATE 1/4"-20UNC -- (6) PLACES. USE VIBRA-TITE. USE NYLON WASHERS FOR SCREWS ATTACHED FROM INSIDE ENCLOSURE. FACTORY INSTALLED.

ALL SHARP CORNERS AND EDGES TO BE BROKEN				EMERY WINSLOW SCALE COMPANY SEYMOUR, CT U.S.A TERRE HAUTE, IN.	
UNLESS OTHERWISE SPECIFIED DIMENSIONS ARE IN INCHES				MODEL 54-6060-10 60 TON 60' X 10' PORTAWEIGH II OUTLINE ARR'G'T., 3/8" S.D.	
MACHINING FABRICATION ±.005 ±.005 ±.013				SCALE 1"=3'	
THIS DRAWING IS THE PROPERTY OF EMERY WINSLOW SCALE COMPANY SEYMOUR, CONNECTICUT. THE INFORMATION CONTAINED HEREIN IS CONFIDENTIAL AND IS NOT TO BE USED OR DISSEMINATED TO OTHERS WITHOUT THE EXPRESS WRITTEN CONSENT OF EMERY WINSLOW SCALE COMPANY.				DRAWN CES DATE 07/25/00 CHECKED DATE ACAD FILENAME: T00782 LAYERS USED: ALL	
DRAWING NO. D-70645				REV.	