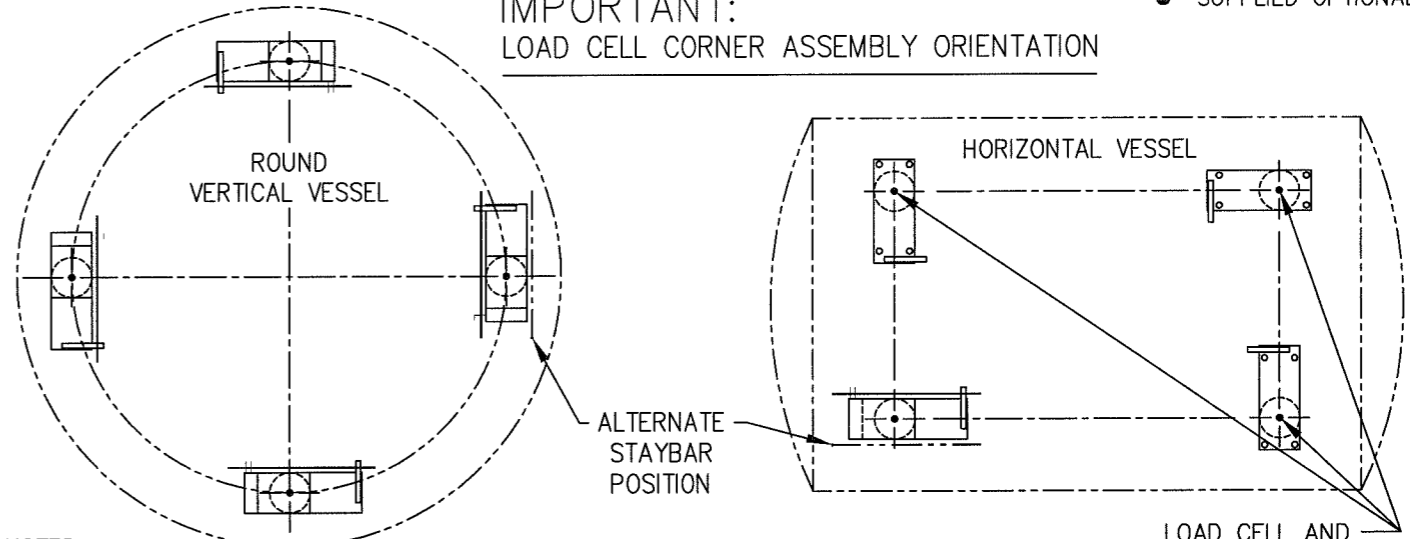


ITEM NO.	DESCRIPTION	QTY	MATERIAL	UNIT WT.	PART NO.	SIZE	WT.
1	LOAD CELL	1	AS SPEC.		MODEL 102-5/10-M2	B-34321 14.8 SQ.IN.	
2	LOAD PLATE WELD'T	1	AS SPEC.		C-34311		
3	BASE PLATE WELD'T	1	AS SPEC.		C-34312		
4	STAYBAR	1	SS 304		0.500-20 UNF X 20.00		
5	NUT, HEX	8	SS 304		0.500-20 UNF		
6	SPHERICAL WASHER	4	SS 304		0.500 A-34509		
7	TUBING	1	SS 304		0.625 OD X #20 (.555 ID) X 12.75		
8	SCREW, HEX HD.	2	SS 304		0.250-20 UNC X 0.63		
9	ANCHOR BOLT EXTRA THREAD	4	AS SPEC.		CS KB112-7 OR SS KB11304SS12-7	HILT, OR EQUAL	●
10	LEVELING NUT	4	CS		0.500-13 UNC		●
11	GROUT (NON-SHRINKING)	A/R			FIVE STAR PRODUCTS INC., FAIRFIELD, CT. 06430, OR EQUAL		●

IMPORTANT:
LOAD CELL CORNER ASSEMBLY ORIENTATION

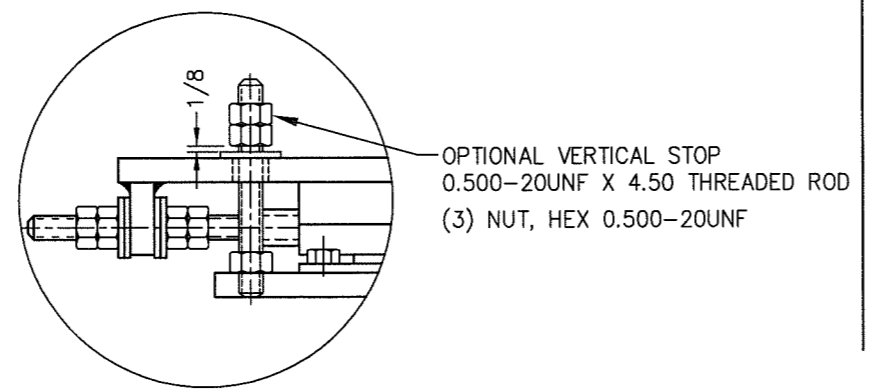
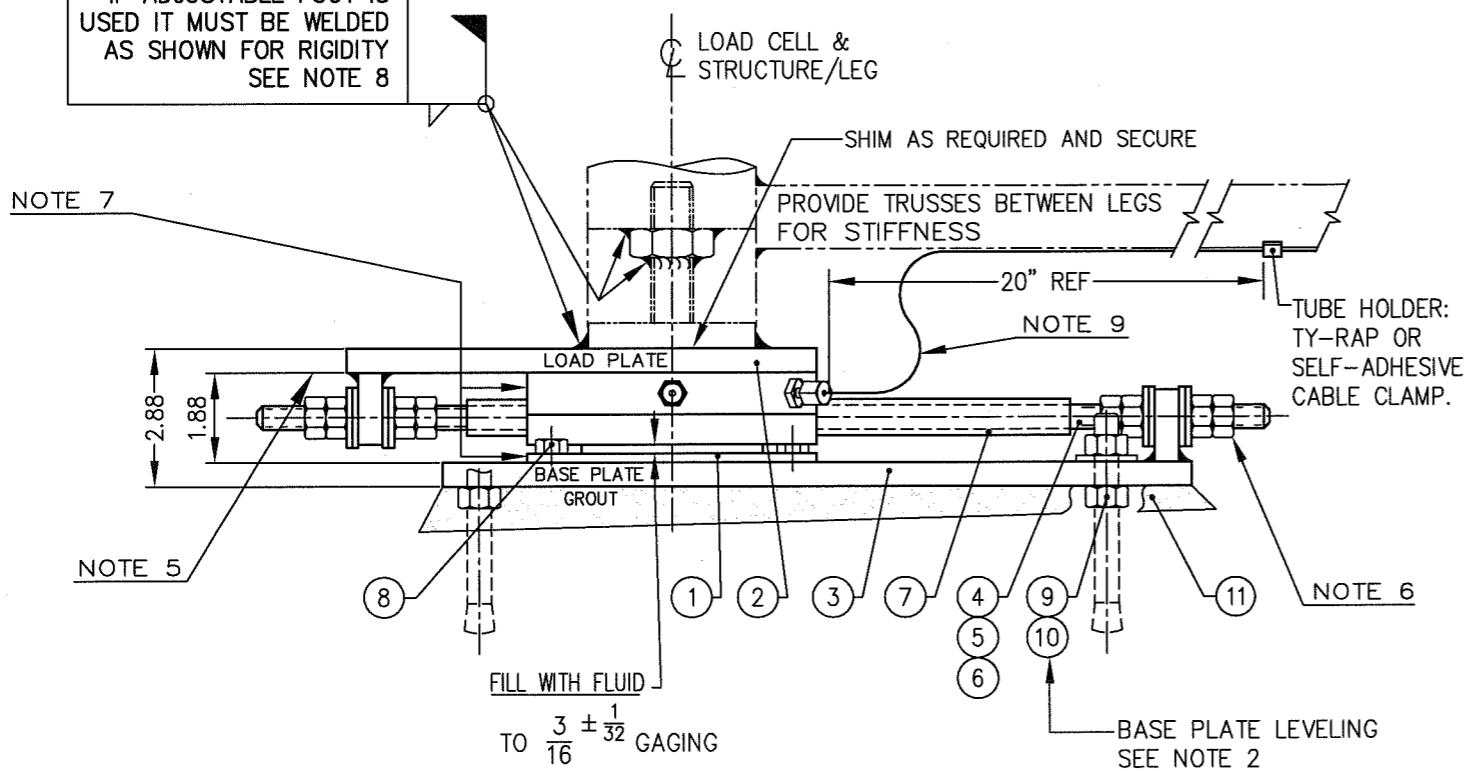
● SUPPLIED OPTIONALLY



- NOTES:
- LAYOUT BASE PLATES ON FLOOR TO LEG CONFIGURATION USING CENTER MARKS. TRANSFER DRILL HOLES FOR ANCHOR BOLTS AND INSTALL TO MANUFACTURERS SPECIFICATIONS.
 - ADJUST LEVELING NUTS (ITEM 10) SUCH THAT THE TOP OF ALL BASE PLATES ARE INSTALLED LEVEL WITHIN 1 DEGREE AND ON A COMMON PLANE TO MINIMIZE SHIMMING. USE GROUT FOR UNEVEN FLOORS.
 - INSTALL LOAD CELL SUCH THAT FITTINGS ARE ACCESSIBLE FOR PURGING AND MAINTENANCE. EITHER FITTING MAY BE USED FOR PRESSURE CONNECTION.
 - INSTALL LOAD PLATE AND ATTACH STAYBAR.
 - BOTTOM OF LOAD PLATE MUST SIT FLAT OVER ENTIRE LOAD CELL HEAD AREA AND BE PARALLEL WITH TOP OF BASE PLATE WITHIN 1 DEGREE.
 - LOWER STRUCTURE/LEGS ONTO LOAD PLATE. POSITION LOAD PLATE SUCH THAT STAYBAR IS INSTALLED AS PERPENDICULAR TO THE STAYBAR BRACKETS AS POSSIBLE. PLACE "INNER NUT" HAND TIGHT, THEN JAM WITH "OUTER NUT".
 - AFTER FASTENING/WELDING OF STRUCTURE/LEGS, MAKE SURE LOAD CELL BASE AND HEAD ARE ALIGNED CONCENTRIC WITHIN 1/32". TO ALIGN LOAD CELL BASE AND HEAD, LIFT SUPPORTED STRUCTURE AND LET LOAD CELL HEAD RECENTER.
 - LEG MUST BE WELDED OR BOLTED RIGIDLY TO LOAD PLATE.
 - FOR HYDRAULIC TUBING DIAGRAM SEE DRAWING B-32727.
 - FOR LOAD CELL FILLING, SEE SERIES 180 TOTALIZER AND SERIES 100 LOAD CELL INSTRUCTION.

DO NOT USE SWIVEL LEVELING FEET

IF ADJUSTABLE FOOT IS USED IT MUST BE WELDED AS SHOWN FOR RIGIDITY SEE NOTE 8



DASH NO.	MATERIAL	MODEL
B-34310-X,Y	CARBON STEEL/ALUMINUM	
B-34310-Z	STAINLESS STEEL 304	

REVISION	DATE	BY
F	6/3/04	CBM
E	7/96	JDS
D	6/96	JDS
C	10/95	JDS
B	12/94	JDS
A	11/94	JDS

STAYBAR : DESIGN STIFFNESS = 1 LB/ 0.01"
DESIGN LOAD = 2,000 LB

EMERY WINSLOW SCALE COMPANY
SEYMOUR, CT U.S.A. TERRE HAUTE, IN.

LOAD CELL CORNER ASSEMBLY INSTALLATION
MODEL 102-5/10
5,000-10,000 LB CAPACITY

THIS DRAWING IS THE PROPERTY OF EMERY WINSLOW SCALE CO. SEYMOUR, CONNECTICUT. THE INFORMATION CONTAINED HEREIN IS CONFIDENTIAL AND IS NOT TO BE USED OR DISSEMINATED TO OTHERS WITHOUT THE EXPRESS WRITTEN CONSENT OF EMERY WINSLOW SCALE CO.

DRAWN JDS DATE 6/27/94
CHECKED DATE
ACAD FILENAME: AC00253
LAYERS USED: 1,2,3,4,5,6,7

SCALE 1:4
FIRST USED ON DRAWING NO. B-34310-
REV. F