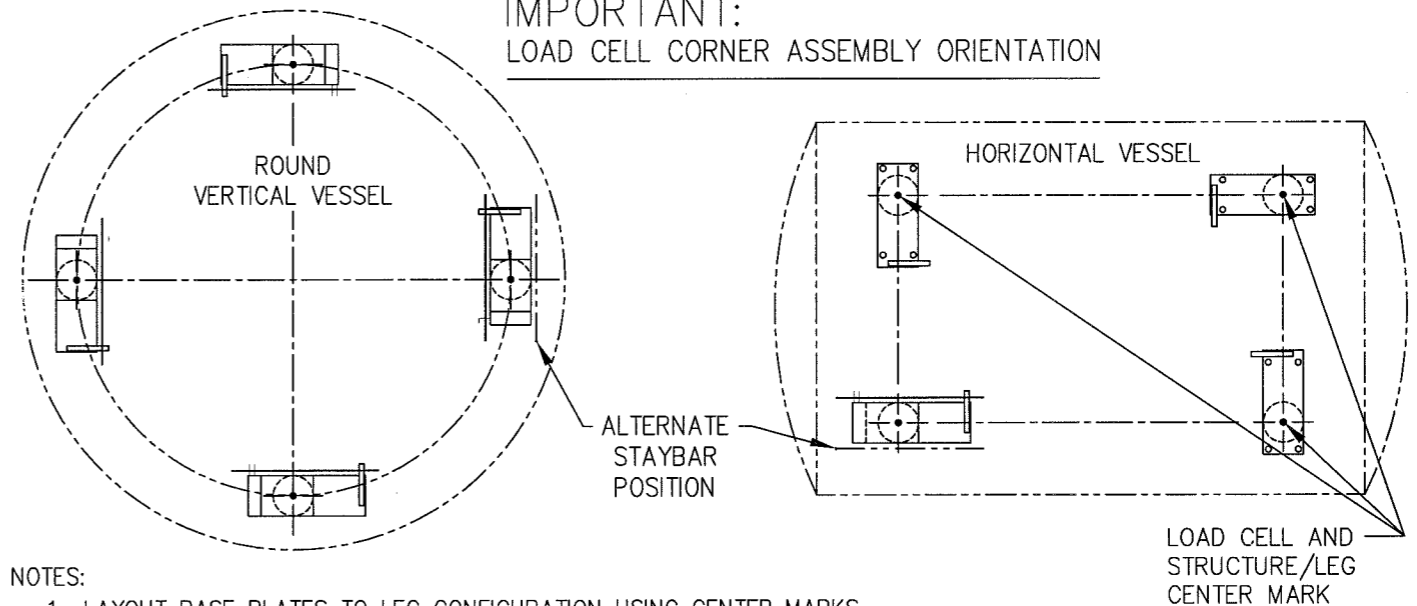


ITEM NO.	DESCRIPTION	QTY	MATERIAL	UNIT WT.	PART NO.	SIZE	WT.
1	LOAD CELL	1	AS SPEC.		MODEL 102-5/10-M2	B-34321 14.8 SQ.IN.	
2	LOAD PLATE WELD'T	1	AS SPEC.		C-34311		
3	BASE PLATE WELD'T	1	AS SPEC.		C-34312		
4	STAYBAR	1	SS 304		0.500-20 UNF X 20.00		
5	NUT, HEX	8	SS 304		0.500-20 UNF		
6	SPHERICAL WASHER	4	SS 304		0.500 A-34509		
7	TUBING	1	SS 304		0.625 OD X #20 (.555 ID) X 12.75		
8	SCREW, HEX HD.	2	SS 304		0.250-20 UNC X 0.63		

IMPORTANT:
LOAD CELL CORNER ASSEMBLY ORIENTATION



NOTES:

- LAYOUT BASE PLATES TO LEG CONFIGURATION USING CENTER MARKS.
 - ALL BASE PLATES MUST BE INSTALLED LEVEL WITHIN 1 DEGREE AND ON A COMMON PLANE WITHIN 1/8" TO MINIMIZE SHIMMING.
 - INSTALL LOAD CELL SUCH THAT FITTINGS ARE ACCESSIBLE FOR PURGING AND MAINTENANCE. EITHER FITTING MAY BE USED FOR PRESSURE CONNECTION.
 - INSTALL LOAD PLATE AND ATTACH STAYBAR.
 - BOTTOM OF LOAD PLATE MUST SIT FLAT OVER ENTIRE LOAD CELL HEAD AREA
 - LOWER STRUCTURE/LEGS ONTO LOAD PLATE. POSITION LOAD PLATE SUCH THAT STAYBAR IS INSTALLED AS PERPENDICULAR TO THE STAYBAR BRACKETS AS POSSIBLE. WELD AS SHOWN. PLACE "INNER NUT" HAND TIGHT, THEN JAM WITH "OUTER NUT".
 - AFTER FASTENING/WELDING OF STRUCTURE/LEGS, MAKE SURE LOAD CELL BASE AND HEAD ARE ALIGNED CONCENTRIC WITHIN 1/32". TO ALIGN LOAD CELL BASE AND HEAD, LIFT SUPPORTED STRUCTURE AND LET LOAD CELL HEAD RECENTER.
 - LEG MUST BE WELDED OR BOLTED RIGIDLY TO LOAD PLATE.
- DO NOT USE ADJUSTABLE OR SELF LEVELING FEET.**
- FOR HYDRAULIC TUBING DIAGRAM SEE DRAWING B-32727.
 - FOR LOAD CELL FILLING, SEE SERIES 180 TOTALIZER AND SERIES 100 LOAD CELL INSTRUCTION.

STAYBAR : DESIGN STIFFNESS = 1 LB/ 0.01"
DESIGN LOAD = 2,000 LB

DASH NO.	MATERIAL	MODEL
B-35871-X,Y	CARBON STEEL/ALUMINUM	
B-35871-Z	STAINLESS STEEL 304	

LTR				REVISION		DATE	BY	ALL SHARP CORNERS AND EDGES TO BE BROKEN		EMERY WINSLOW SCALE COMPANY SEYMOUR, CT U.S.A. TERRE HAUTE, IN.			
THIS DRAWING IS THE PROPERTY OF EMERY WINSLOW SCALE COMPANY SEYMOUR, CONNECTICUT. THE INFORMATION CONTAINED HEREIN IS CONFIDENTIAL AND IS NOT TO BE USED OR DISSEMINATED TO OTHERS WITHOUT THE EXPRESS WRITTEN CONSENT OF EMERY WINSLOW SCALE COMPANY.								UNLESS OTHERWISE SPECIFIED DIMENSIONS ARE IN INCHES MACHINING .XX = ±.01 XXX = ±.005		FABRICATION ±.13			
DRAWN GME DATE 09/16/03								CHECKED DATE		INSTALLATION OF HYDROSTATIC COMPRESSION LOAD CELL ON STEEL MODEL 102-5/10 5,000-10,000 LB CAPACITY			
ACAD FILENAME: AC01097								LAYERS USED: 01-07		SCALE 1:4	FIRST USED ON	DRAWING NO. B-35871-	REV. -