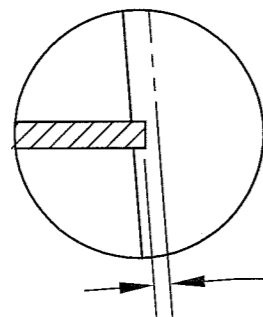


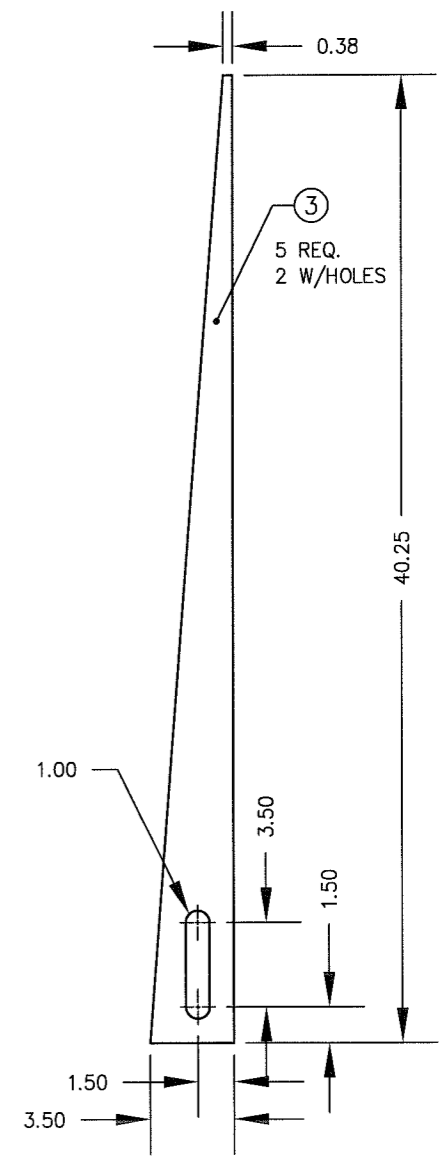
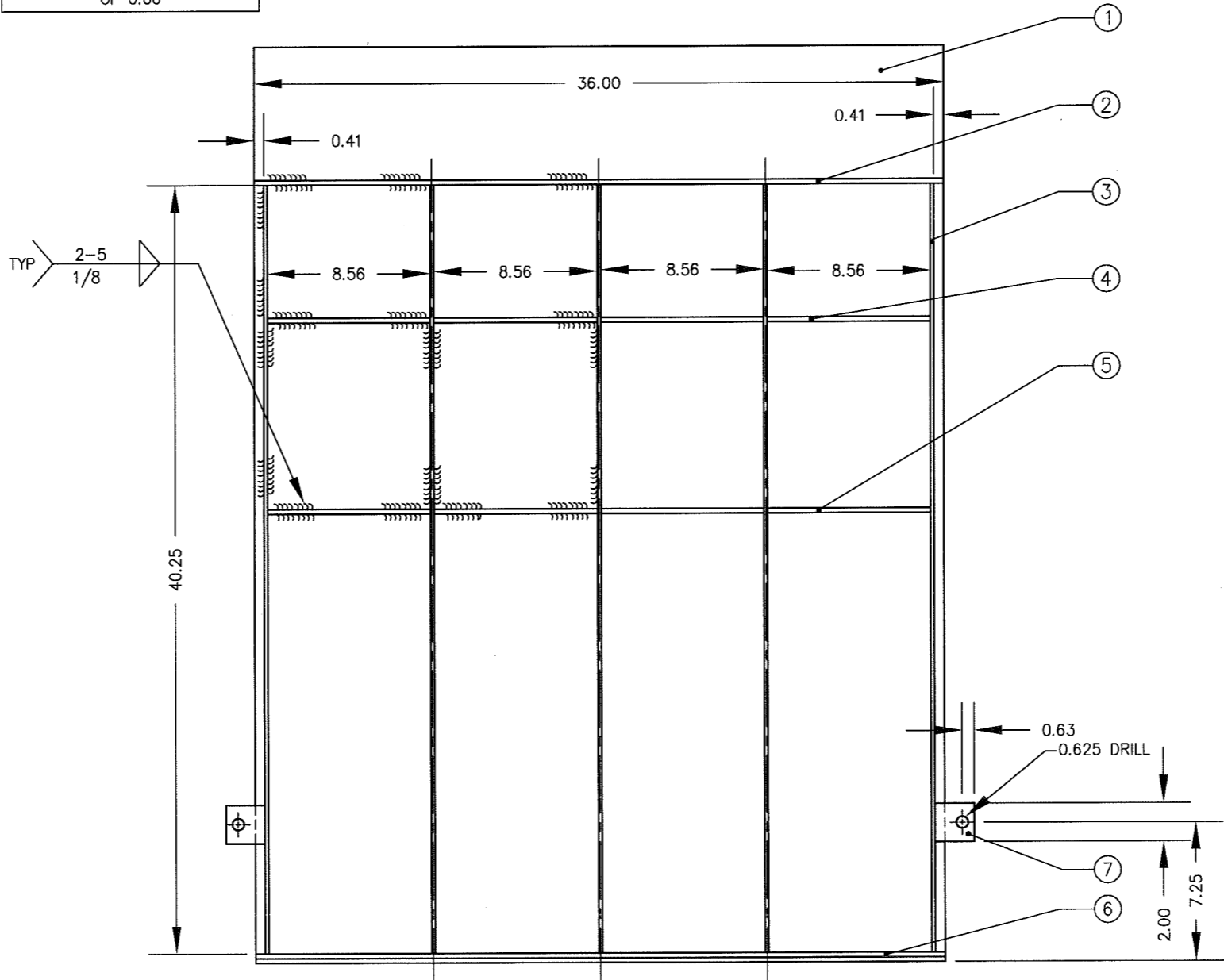
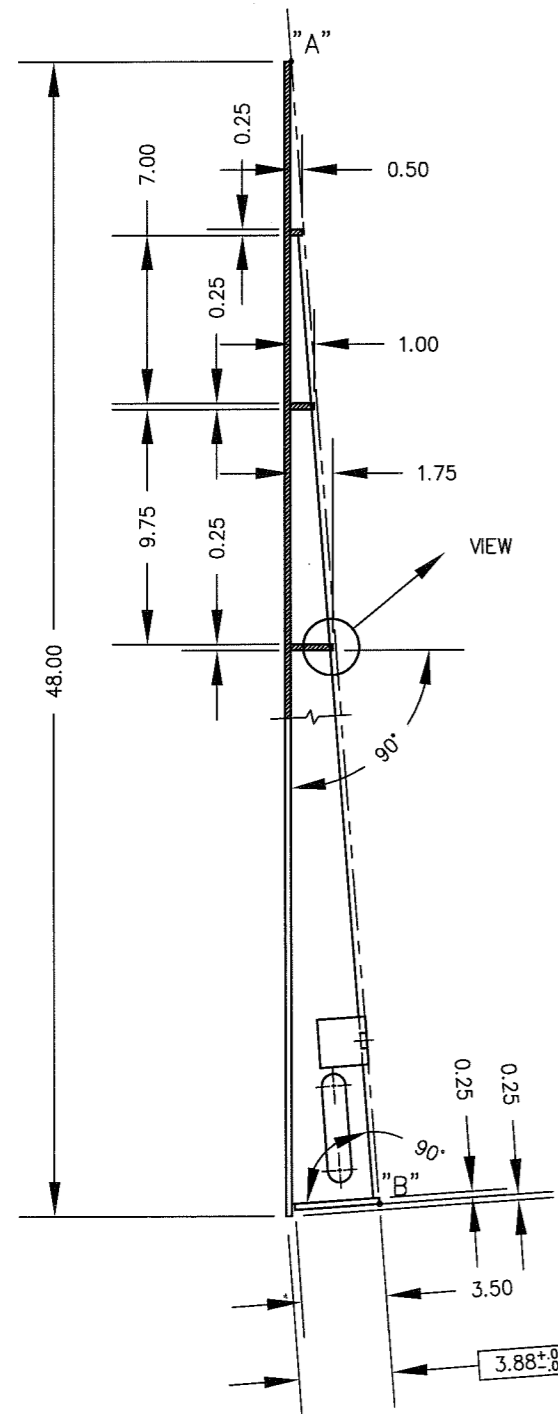
| ITEM NO. | DESCRIPTION | QTY | MATERIAL | UNIT WT. | PART NO. | SIZE | WT. |
|----------|--------------------|-----|----------|----------|---------------------------------|------|-----|
| 1 | 4 WAY SAFETY PLATE | 1 | A/R | 11.3 | 0.25 X 48.00 X 36.00 | | 136 |
| 2 | GUSSET | 1 | A/R | 0.5 | 0.25 X 0.50 X 36.00 | | 1.5 |
| 3 | GUSSET | 5 | A/R | 2.5 | 0.19 X 3.88 X 40.25 | | 20 |
| 4 | STIFFENER | 4 | A/R | 0.9 | 0.25 X 1.00 X 8.50 | | 2.6 |
| 5 | STIFFENER | 4 | A/R | 1.5 | 0.25 X 1.75 X 8.50 | | 4.3 |
| 6 | GUSSET | 1 | A/R | 3.0 | 0.25 X 3.50 X 36.00 | | 9 |
| 7 | BRACKET | 2 | A/R | 3.2 | 0.25 X 2.00 X 2.00 X 2.00 ANGLE | | 1.1 |
| 8 | | | | | | | |
| 9 | | | | | | | |
| 10 | | | | | | | |
| 11 | | | | | | | |



VIEW

PLACE A BAR OVER
EDGE "A" AND "B" TO
SET UP FOR A CLEARANCE
TO FLOOR FOR ITEMS 2, 4 & 5
OF 0.06

TOTAL WEIGHT = 175



NOTE:
1. MATERIAL: -Y CARBON STEEL
-Z SS 304

| | | | | | | | |
|--|------------|---------|-----|---|----------------------|---|---------------|
| | | | | ALL SHARP CORNERS AND EDGES TO BE BROKEN | | EMERY WINSLOW SCALE COMPANY SEYMOUR, CT U.S.A TERRE HAUTE, IN. | |
| | | | | UNLESS OTHERWISE SPECIFIED DIMENSIONS ARE IN INCHES | | RAMP ASSEMBLY 36.00 X 48.00 X 3.88 (4*) 4,000 lb AXLE | |
| A | REDESIGNED | 4/26/04 | CBM | MACHINING XX = ± .01 XXX = ± .005 | FABRICATION ± .13 | SCALE | FIRST USED ON |
| LTR | REVISION | DATE | BY | ± .13 | ± .13 | 1:8 | |
| THIS DRAWING IS THE PROPERTY OF EMERY WINSLOW SCALE COMPANY SEYMOUR, CONNECTICUT. THE INFORMATION CONTAINED HEREIN IS CONFIDENTIAL AND IS NOT TO BE USED OR DISSEMINATED TO OTHERS WITHOUT THE EXPRESS WRITTEN CONSENT OF EMERY WINSLOW SCALE COMPANY. | | | | DRAWN GMR | DATE 1/29/03 | DRAWING NO. | REV. |
| | | | | CHECKED | DATE | B-35735 | A |
| | | | | ACAD FILENAME: ACO1003 | | | |
| | | | | LAYERS USED: 01,04 | | | |