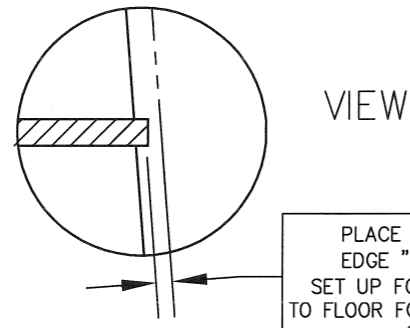
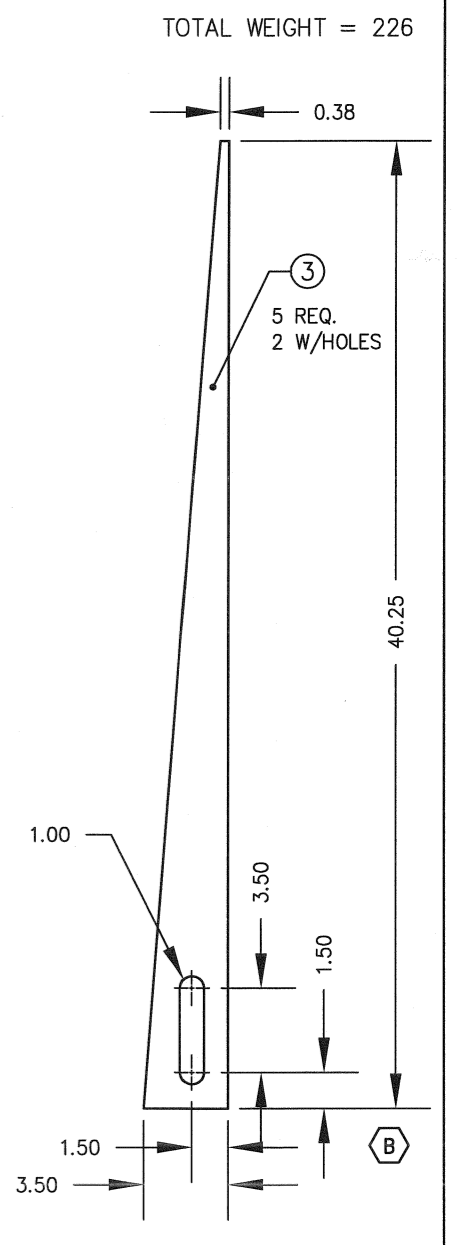
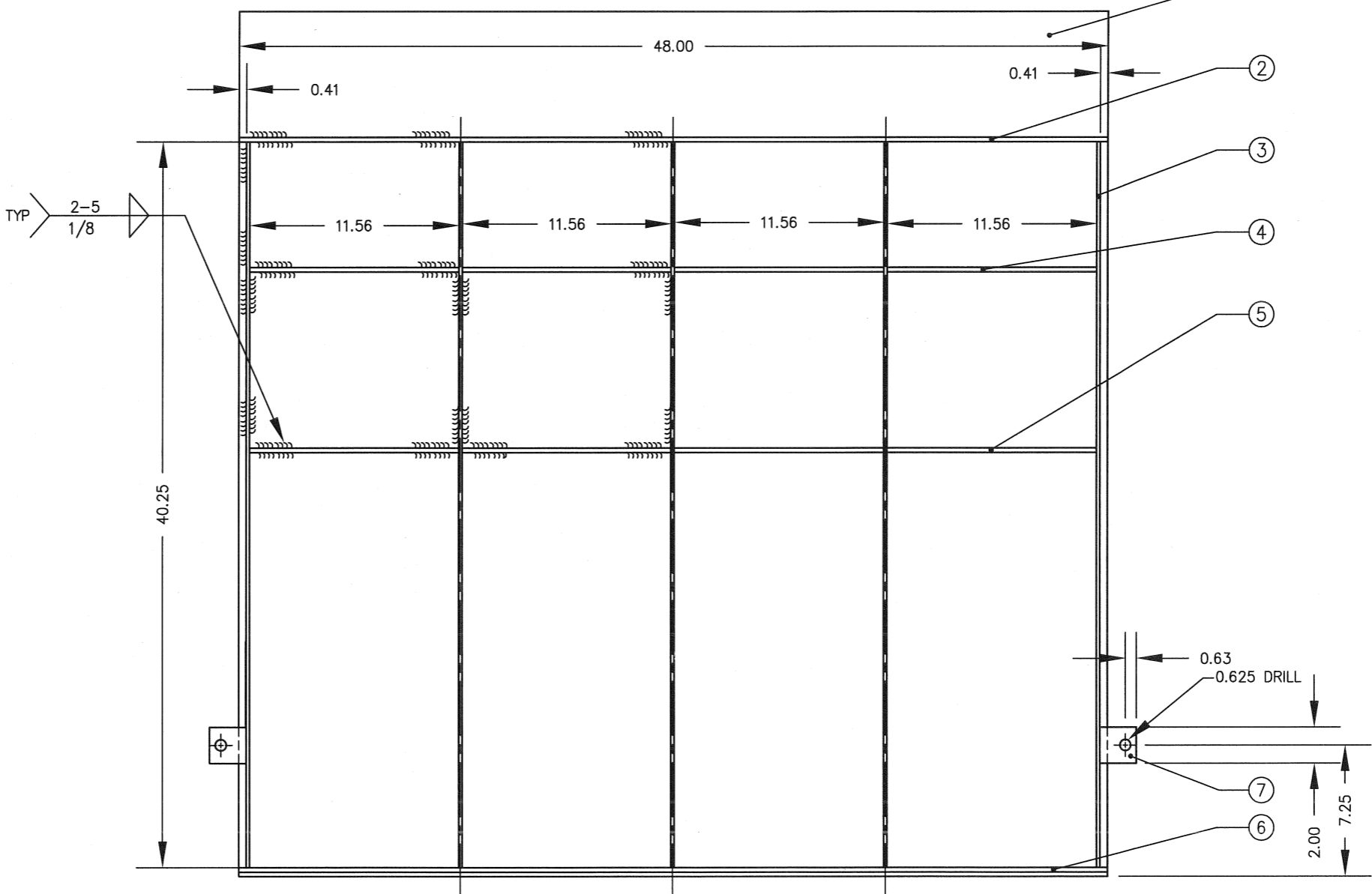
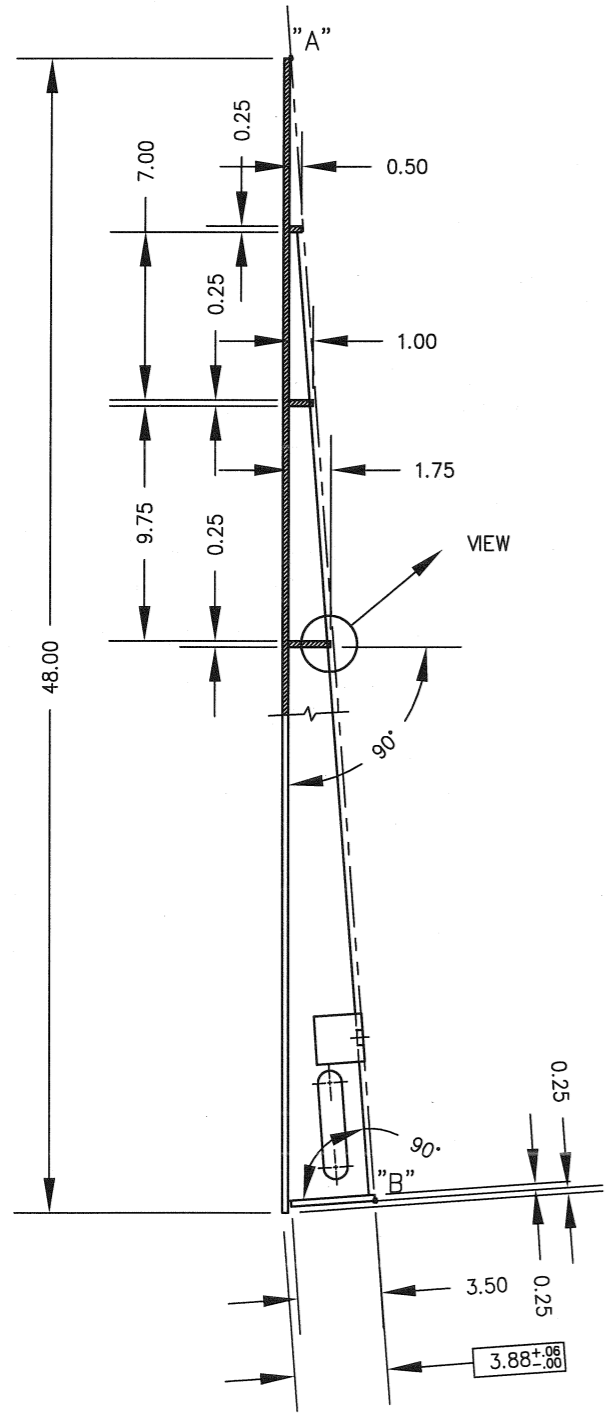


ITEM NO.	DESCRIPTION	QTY	MATERIAL	UNIT WT.	PART NO.	SIZE	WT.
1	4 WAY SAFETY PLATE	1	A/R	11.3	0.25 X 48.00 X 48.00		181
2	GUSSET	1	A/R	0.5	0.25 X 0.50 X 48.00		2.0
3	GUSSET	5	A/R	2.5	0.19 X 3.88 X 40.25		20
4	STIFFENER	4	A/R	0.9	0.25 X 1.00 X 11.56		3.7
5	STIFFENER	4	A/R	1.5	0.25 X 1.75 X 11.56		6
6	GUSSET	1	A/R	3.0	0.25 X 3.50 X 48.00		12
7	BRACKET	2	A/R	3.2	0.25 X 2.00 X 2.00 X 2.00 ANGLE		1.1
8							
9							
10							
11							



PLACE A BAR OVER EDGE "A" AND "B" TO SET UP FOR A CLEARANCE TO FLOOR FOR ITEMS 2, 4 & 5 OF 0.06



NOTE:
1. MATERIAL: -Y CARBON STEEL
-Z SS 304

TOTAL WEIGHT = 226

				ALL SHARP CORNERS AND EDGES TO BE BROKEN		EMERY WINSLOW SCALE COMPANY	
				UNLESS OTHERWISE SPECIFIED DIMENSIONS ARE IN INCHES		SEYMOUR, CT U.S.A TERRE HAUTE, IN.	
B	40.25 DIM MOVED	4/30/04	CBM	MACHINING	FABRICATION	RAMP ASSEMBLY	
A	REDESIGNED	4/26/04	CBM	.XX = ± .01	± .13	48.00 X 48.00 X 3.88 (4")	
LTR	REVISION	DATE	BY	.XXX = ± .005		4,000 lb AXLE	
THIS DRAWING IS THE PROPERTY OF EMERY WINSLOW SCALE COMPANY SEYMOUR, CONNECTICUT. THE INFORMATION CONTAINED HEREIN IS CONFIDENTIAL AND IS NOT TO BE USED OR DISSEMINATED TO OTHERS WITHOUT THE EXPRESS WRITTEN CONSENT OF EMERY WINSLOW SCALE COMPANY.				DRAWN GMR	DATE 01/29/03	SCALE 1:8	FIRST USED ON
				CHECKED	DATE	DRAWING NO. B-35736	REV. B
				ACAD FILENAME: AC01004			
				LAYERS USED: 01,02			