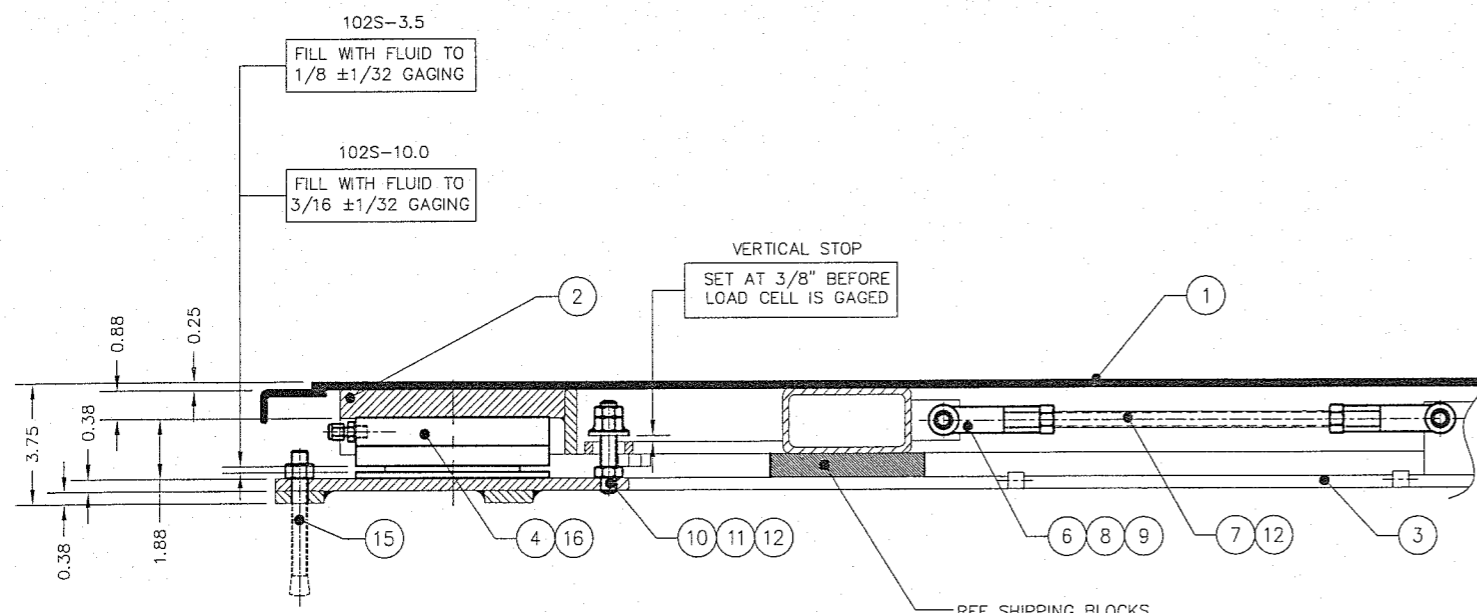
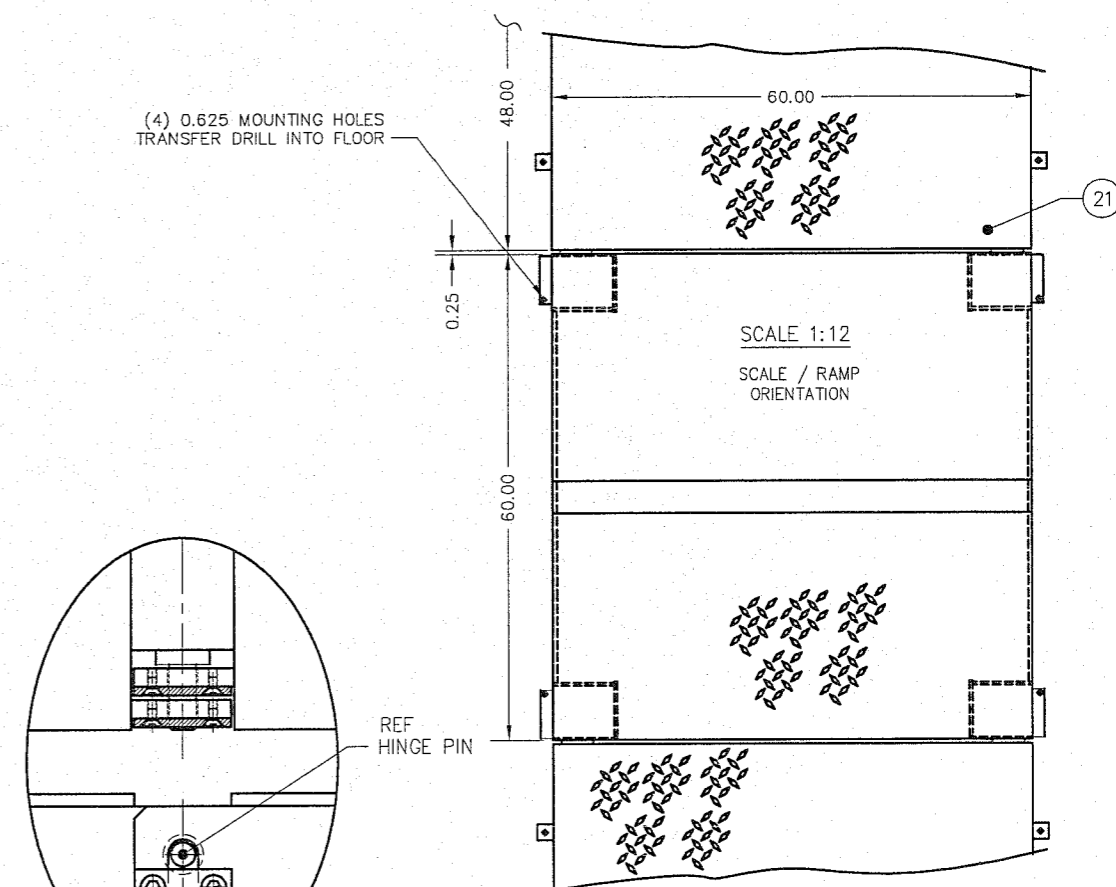
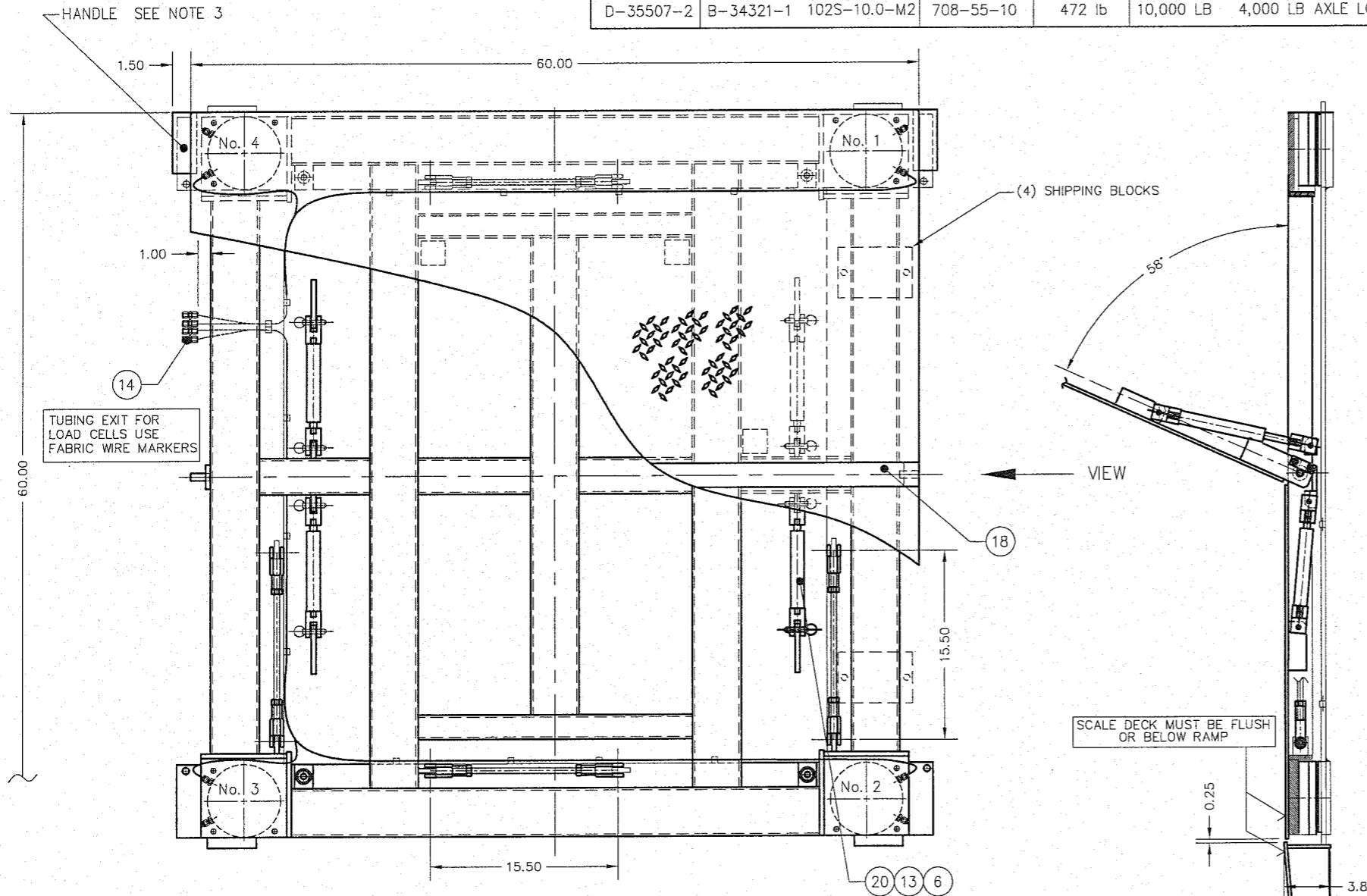


DASH NO.	LOAD CELL MODEL NO.	SCALE MODEL NO.	DEAD WEIGHT	CAPACITY
D-35507-1	B-34326-2 B-34321-1	102S-03.5-M1 102S-10.0-M2	708-55-2 708-55-5	2,000 LB 5,000 LB
D-35507-2	B-34321-1	102S-10.0-M2	708-55-10	2,000 LB AXLE LOAD 4,000 LB AXLE LOAD 10,000 LB 4,000 LB AXLE LOAD

ITEM NO.	DESCRIPTION	QTY	MATERIAL	UNIT WT.	PART NO.	SIZE	WT.
1	LIFT DECK SET	1	SS 304	282	D-35891 (0.25THK)	(4 WAY SAFETY PLATE - OPTIONAL)	282
2	DECK FRAME	1	SS 304		D-35890		209
3	BASE FRAME	1	SS 304		D-35509		119
4	LOAD CELL	4	SS 304		SEE TABLE		
5	ROD CLEVIS	8	SS 304		A-34541-3	M10 X 1.5	
6	ROD CLEVIS	8	SS 304		2806SS	0.500-20 UNF	MIDWEST CONTROL PRODUCTS CORP.
7	STAYBAR	4	SS 304		A-35900-3	0.500-20 UNF X 13.25	
8	CLEVIS PIN	8	SS 303		92390A382	0.50 DIA X 1.19 GRIP LENGTH	McMASTER-CARR
9	HAIR PIN COTTER	8	SS 304		92391A310	0.25 - 0.38 SHAFT 1.18 OL	McMASTER-CARR
10	VERTICAL STOP THRO ROD	4	SS 304		0.500-20 UNF X 2.75		
11	VS HEX NUT WELDMENT	4	SS 304		A-35703		
12	HEX NUT, HALF	16	SS 304		0.500-20 UNF		
13	QUICK RELEASE PIN	8	SS 303		98404A372	0.38 DIA X 1.2 GRIP LENGTH	McMASTER CARR
14	UNION	4	SS 316		SS-200-6		SWAGelok OR EQUAL
15	ANCHOR BOLT 0.50 X 4.50	4 + A/R	SS 304		KB11304SS12-412		HILTI OR EQUAL
16	HHCS	8	SS		0.250-20 UNC X 0.50		
17	FHCS	8	SS		0.250-20 UNC X 0.50		
18	SPACER BAR	1	SS 304		B-35558-2		
19	LASH	4	SS 304		A-35557		
20	GAS SPRINGS	4	SS 316		1165-SSH-2.5-360	(REF B-35517)	AMERI TOOL
21	RAMP	A/R	SS 304		B-35706		



- NOTES:
- CAUTION: WHEN USING FORK LIFT TO MOVE SCALE ADD SHIPPING BLOCKS AS SHOWN.
  - SEE PRODUCTION CONTROL DRAWING D-35654.
  - OPENING HAND FORCE 45 lb.
  - FINISH: WHITE SAND BLAST TO (125 MIC).

REV	DESCRIPTION	DATE	BY
G	DRAWING & BOM UPDATED TO NEW STAYBAR ARRANGEMENT	9/6/05	CBM
F	CHART UPDATED	7/28/04	CBM
E	DECK FRAME REDESIGNED D-35891 WAS D-35510, D-35890 WAS D-35508	2/19/04	CBM
D	DRAWING UPDATED	10/29/03	CBM
C	3.75 WAS 4.00, 0.38 WAS 0.63 AND 3.88 WAS 4.25. ITEM 17 0.250-20UNC X 0.50 WAS 0.250-20UNC X 0.36 ON B/M ITEM 21 B-35706 WAS B-34859.	01/26/03	GMR
B	REVISED	11/6/02	CBM
A	REVISED	4/8/02	CBM

EMERY WINSLOW SCALE COMPANY  
SEYMOUR, CT U.S.A. TERRE HAUTE, IN.

SCALE ASSEMBLY  
708-55-  
WITH GAS SPRING LIFT DECK

DRAWN: CBM DATE: 9/28/01  
CHECKED: DATE:  
ACAD FILENAME: ACO0871  
LAYERS USED: LO-L06

SCALE: 1:6  
FIRST USED ON: 1:3

DRAWING NO. D-35507-  
REV G

THIS DRAWING IS THE PROPERTY OF EMERY WINSLOW SCALE COMPANY SEYMOUR, CONNECTICUT. THE INFORMATION CONTAINED HEREIN IS CONFIDENTIAL AND IS NOT TO BE USED OR DISSEMINATED TO OTHERS WITHOUT THE EXPRESS WRITTEN CONSENT OF EMERY WINSLOW SCALE COMPANY.