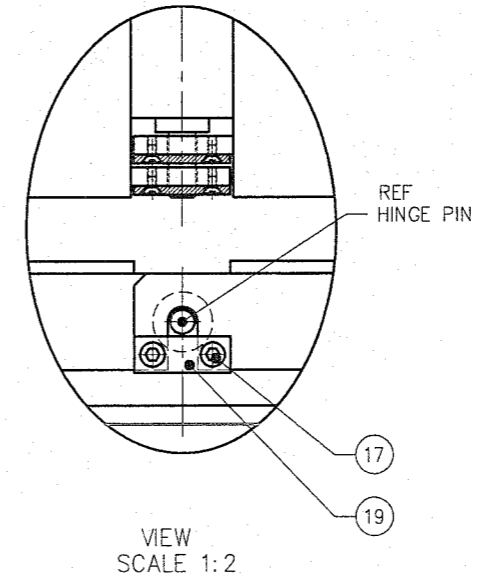
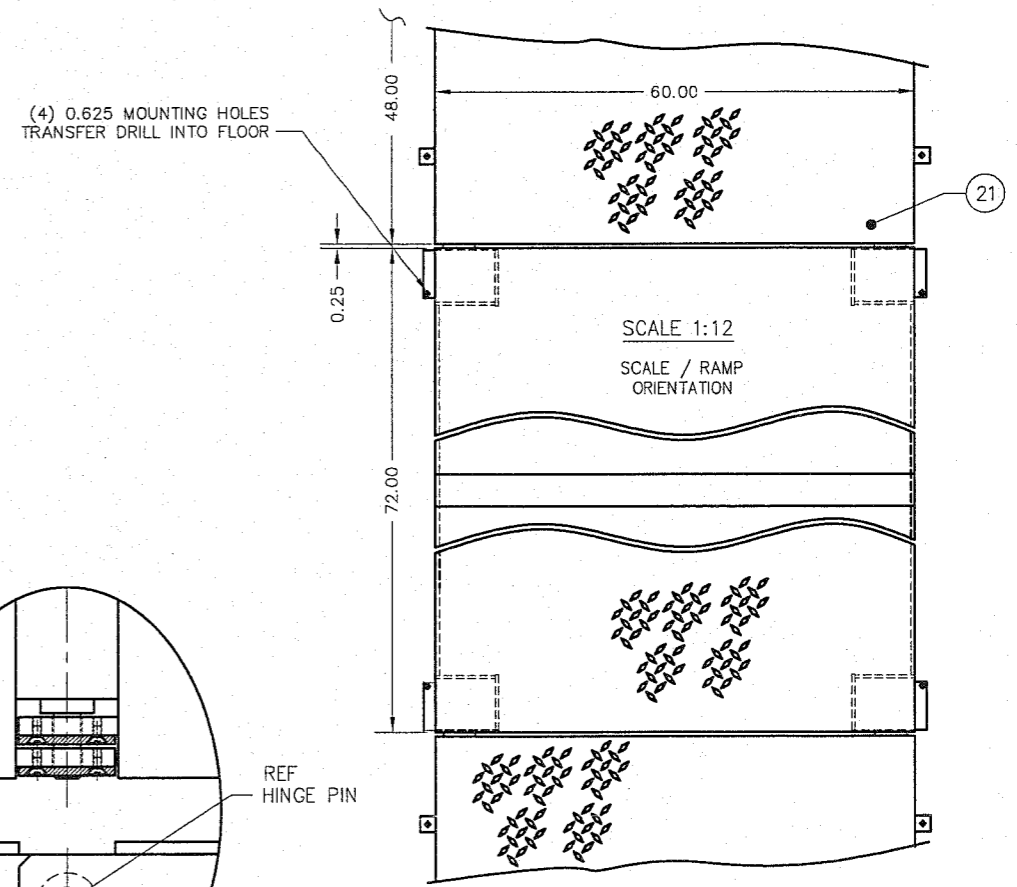
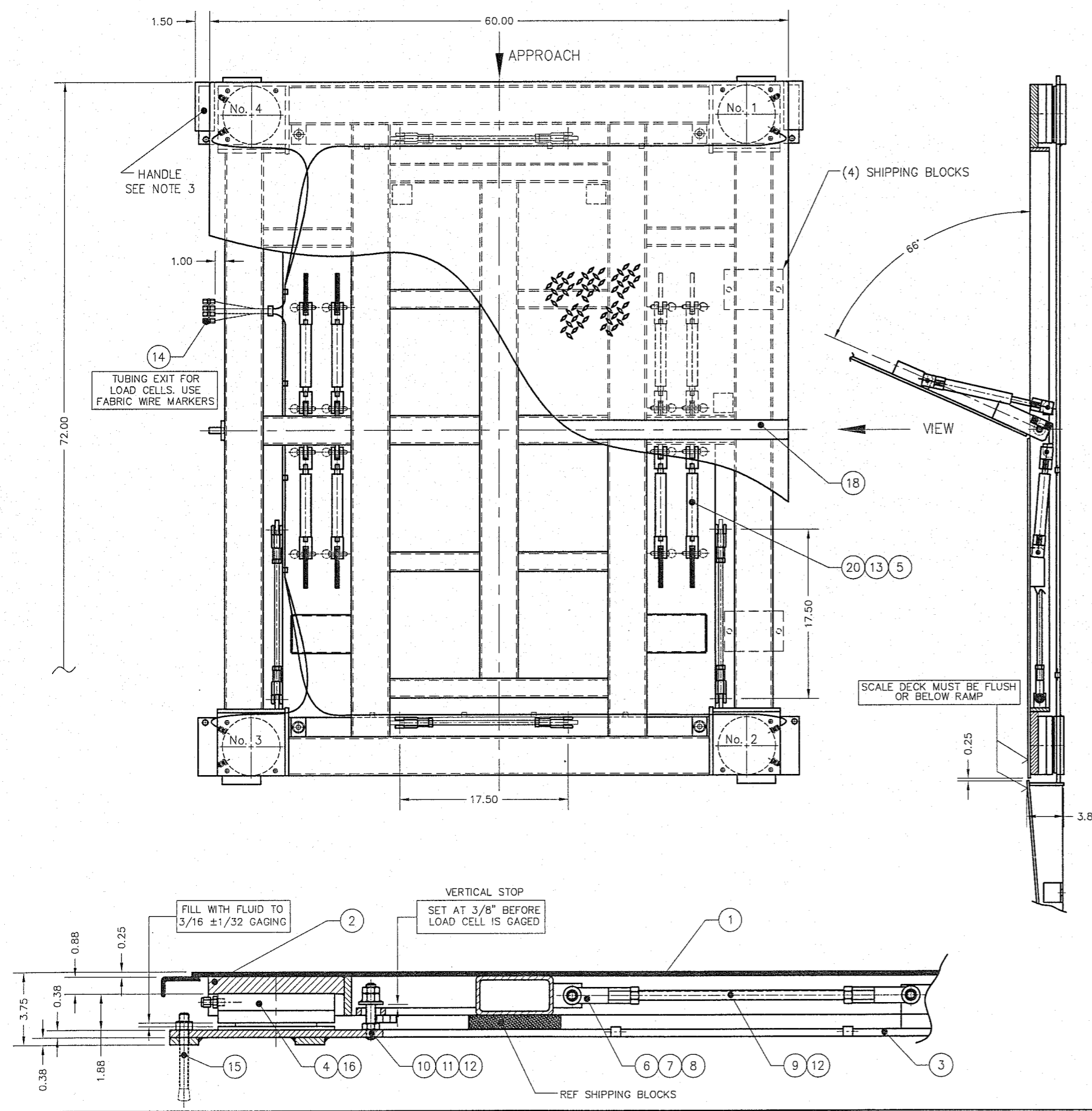


ITEM NO.	DESCRIPTION	QTY	MATERIAL	UNIT WT.	PART NO.	SIZE	WT.
1	LIFT DECK SET	1	SS 304		D-35889	(0.25THK) (4 WAY SAFETY PLATE - OPTIONAL)	330
2	DECK FRAME	1	SS 304		D-35888		400
3	BASE FRAME	1	SS 304		D-35774		134
4	LOAD CELL	4	SS 304		B-34321-1	102S-10-M2	
5	ROD CLEVIS	16	SS 304		A-34541-3	M10 x 1.5	
6	ROD CLEVIS	8	SS 304		2806SS	0.500-20 UNF	MIDWEST CONTROL PRODUCTS CORP.
7	CLEVIS PIN	8	SS 303		92390A382	0.50 DIA X 1.19 GRIP LENGTH	McMASTER CARR
8	HAIR PIN COTTER	8	SS 304		92391A310	0.25 - 0.38 SHAFT 1.18 OL	McMASTER CARR
9	STAYBAR	4	SS 304		A-35900-3	0.500-20 UNF X 13.25	
10	VERTICAL STOP THRD ROD	4	SS 304		0.500-20 UNF X 2.75		
11	VS HEX NUT WELDMENT	4	SS 304		A-35703		
12	HEX NUT, HALF	16	SS 304		0.500-20 UNF		
13	QUICK RELEASE PIN	16	SS 303		98404A372	0.38 DIA X 1.2 GRIP LENGTH	McMASTER CARR
14	UNION	4	SS 316		SS-200-6		SWAGelok OR EQUAL
15	ANCHOR BOLT 0.50 X 4.50	4 + A/R	SS 304		KB11304SS12-412		HILTI OR EQUAL
16	HHCS	8	SS		0.250-20 UNC X 0.50		
17	FHSCS	8	SS		0.250-20 UNC X 0.50		
18	SPACER BAR	1	SS 304		B-35558-2		
19	LASH	4	SS 304		A-35557		
20	GAS SPRINGS	8	SS 316		1165-SSHD-2.5-360	(REF B-35517)	AMERI TOOL
21	RAMP	A/R	SS 304		B-35706		

DEAD WEIGHT (lb)	770
CAPACITY (lb)	10,000 4000 AXLE LOAD



- NOTES:
- CAUTION: WHEN USING FORK LIFT TO MOVE SCALE ADD SHIPPING BLOCKS AS SHOWN.
  - SEE PRODUCTION CONTROL DRAWING D-35654.
  - OPENING HAND FORCE 45 lb.
  - FINISH: WHITE SAND BLAST TO (125 MIC).

ALL SHARP CORNERS AND EDGES TO BE BROKEN		EMERY WINSLOW SCALE COMPANY SEYMOUR, CT U.S.A. TERRE HAUTE, IN.	
B	CORNER WLDMT REVISED; DWC & BOM UPDATED TO NEW STAYBAR ARRANGEMENT	9/6/05	CBM
A	DECK FRAME REDESIGNED D-35888 WAS D-35776, D-35888 WAS D-35775	11/10/03	CBM
REV	DESCRIPTION	DATE	BY
THIS DRAWING IS THE PROPERTY OF EMERY WINSLOW SCALE COMPANY SEYMOUR, CONNECTICUT. THE INFORMATION CONTAINED HEREIN IS CONFIDENTIAL AND IS NOT TO BE USED OR DISSEMINATED TO OTHERS WITHOUT THE EXPRESS WRITTEN CONSENT OF EMERY WINSLOW SCALE COMPANY.		DRAWN: GMR	DATE: 02/27/03
TOLERANCES UNLESS SPECIFIED OTHERWISE: MACHINING: .XX = ± .01 .XXX = ± .005 ± .13		CHECKED: DATE:	SCALE: 1:6 1:3
ACAD FILENAME: ACO1019		FIRST USED ON:	DRAWING NO. D-35773
LAYERS USED: LO-L06		REV	B