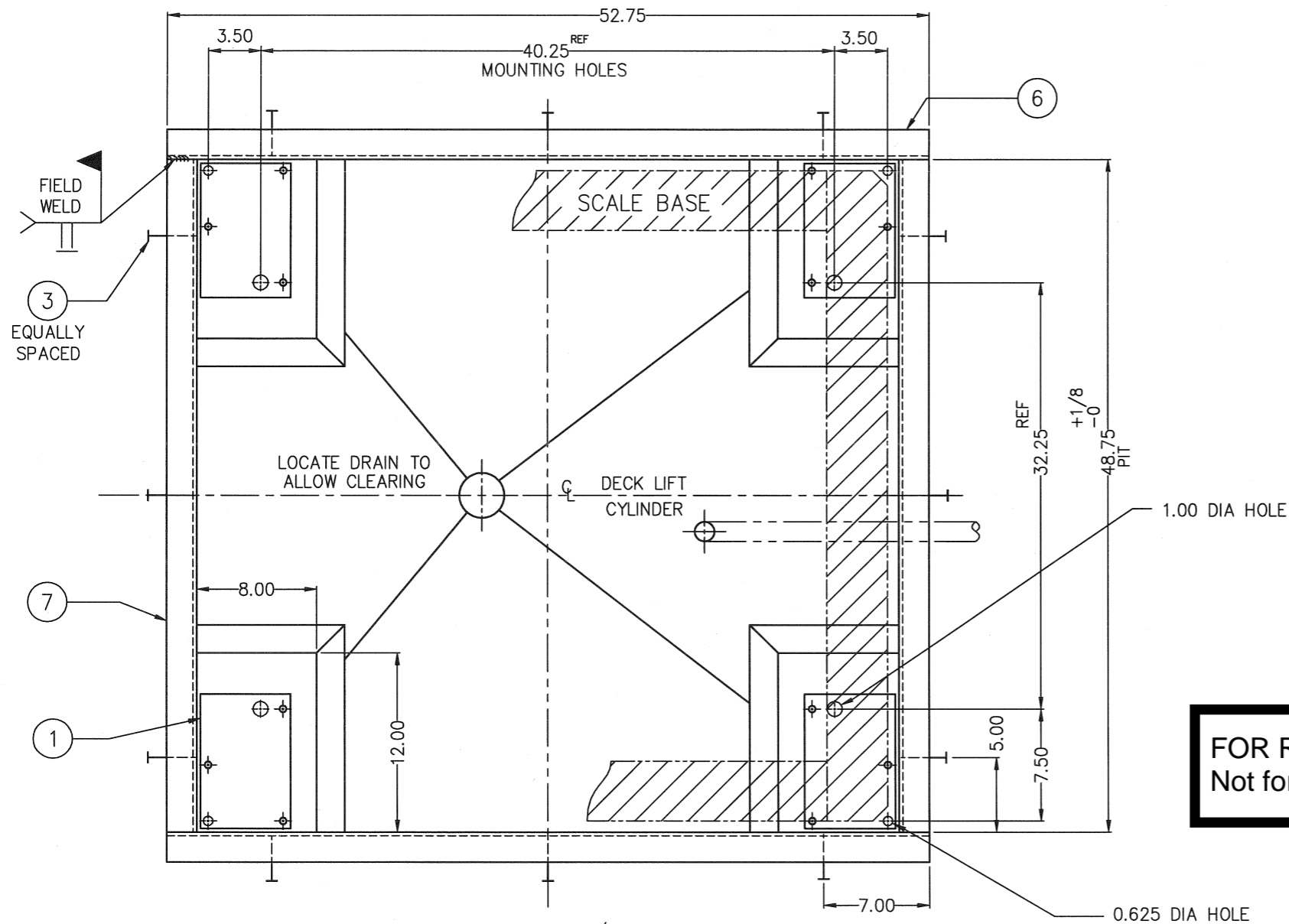


NOTES:

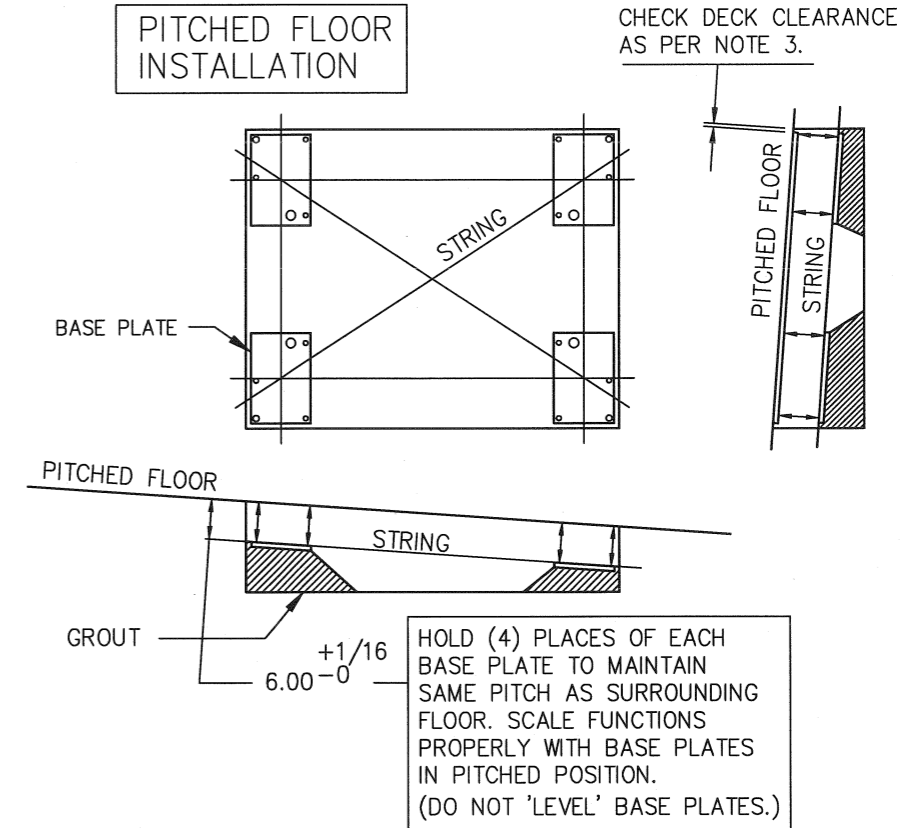
1. Install four (4) anchor bolts, item 4, as per manufacturers specification.
2. Set base plate item 1 to proper height and level as specified, using greased leveling screws. Remove plate and apply a layer of grout in plate area slightly higher than required. Bolt base plate down to preset screws, squeezing out excess grout. Double check height and level. Remove leveling screws after approximately 2 to 3 hours.
3. Place scale assembly into pit with removable deck installed. Check for even gap between decks and pit coping all around scale.
4. Remove decks and transfer drill holes for four (4) anchor bolts, item 4. Install anchor bolts as per manufacturer's specification.
5. Tighten anchor bolts.

ITEM NO.	DESCRIPTION	QTY	MATERIAL	UNIT WT.	PART NO.	SIZE	WT.
1	BASE PLATE	4	SS 304	7.65	B-33340	(0.38 X 6 X 9)	20.5
2	LEVELING SCREW	12	CS		0.500-13UNC X 4.00		
3	NELSON STUD	16	CS		101-053-003	0.50 X 4.13 X H4L	OPT
4	ANCHOR BOLT	8	SS 304		KB11304SS112-512		HILTI OR EQUAL OPT
5	GROUT (NON-SHRINKING)	A/R			FIVE STAR PRODUCTS, INC., FAIRFIELD, CT., 06430		OR EQUAL OPT
6	COPING	2	SS 304		2 X 2 X 0.25 X 52.75		OPT
7	COPING	2	SS 304		2 X 2 X 0.25 X 48.75		OPT

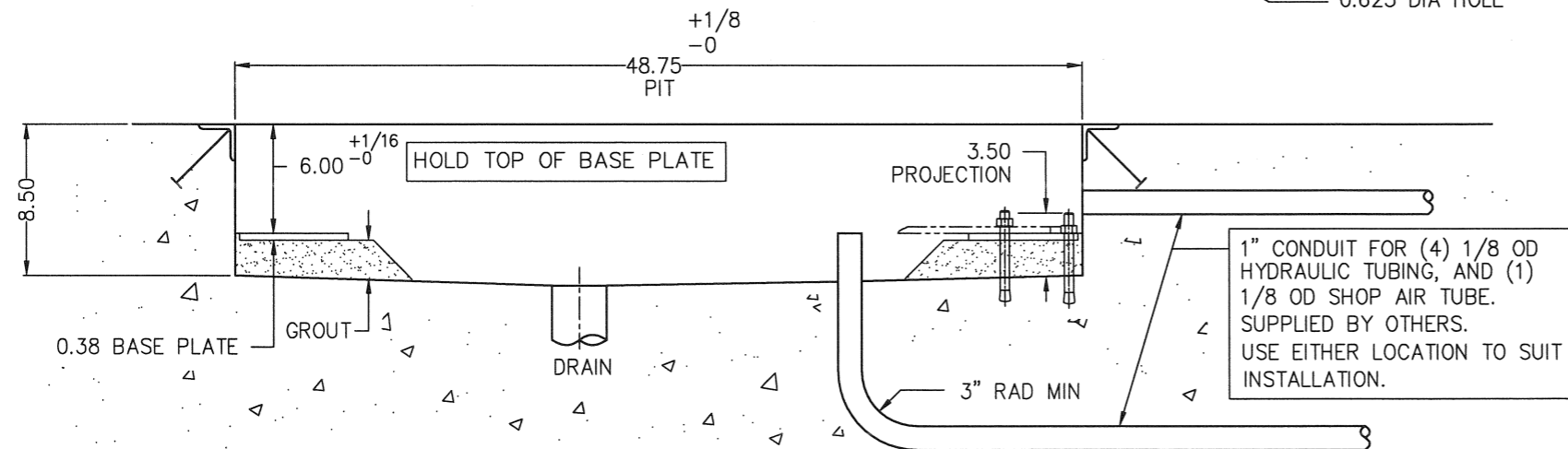
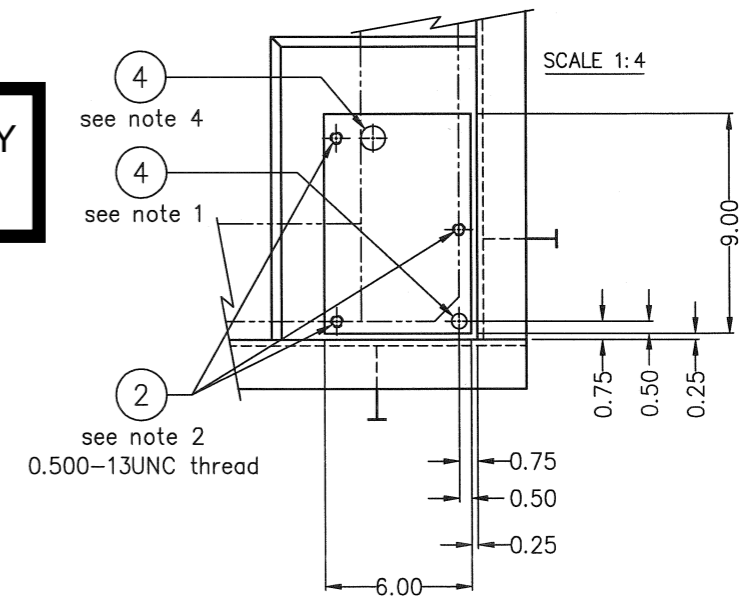
AVAILABLE AS AN OPTION = OPT



PITCHED FLOOR INSTALLATION



**FOR REFERENCE ONLY
Not for Construction**



				ALL SHARP CORNERS AND EDGES TO BE BROKEN		EMERY WINSLOW SCALE COMPANY SEYMOUR, CT U.S.A TERRE HAUTE, IN.	
B	DECK LIFT CYLINDER ADDED	12/2/99	CBM	UNLESS OTHERWISE SPECIFIED DIMENSIONS ARE IN INCHES		PIT ARRANGEMENT	
A	ITEM 2,4 CHANGED	11/96	JDS	DECIMALS	FRACTIONS	ANGLES	MODEL 709-44
LTR	REVISION	DATE	BY	3/16 ± .005	3/16 ± .005	±	WITH PNEUMATIC DECK LIFTING
THIS DRAWING IS THE PROPERTY OF EMERY WINSLOW SCALE COMPANY SEYMOUR, CONNECTICUT. THE INFORMATION CONTAINED HEREIN IS CONFIDENTIAL AND IS NOT TO BE USED OR DISSEMINATED TO OTHERS WITHOUT THE EXPRESS WRITTEN CONSENT OF EMERY WINSLOW SCALE COMPANY.				DRAWN	JDS	DATE	8/14/95
				CHECKED	DATE	SCALE FIRST USED ON DRAWING NO. REV. B	
				ACAD FILENAME:	AC00298	D-34591	
				LAYERS USED:	1,21,22	NOT TO SCALE	