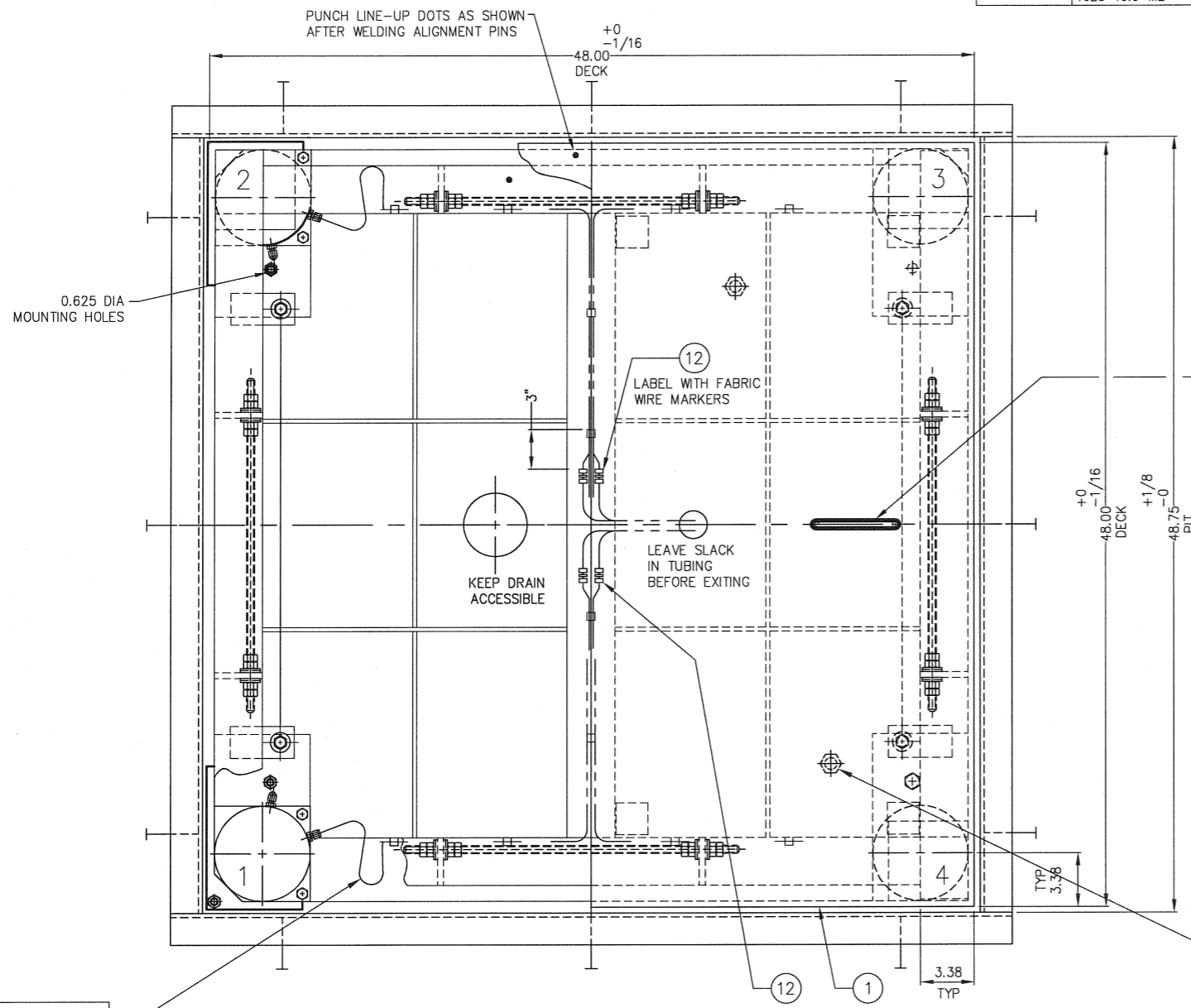
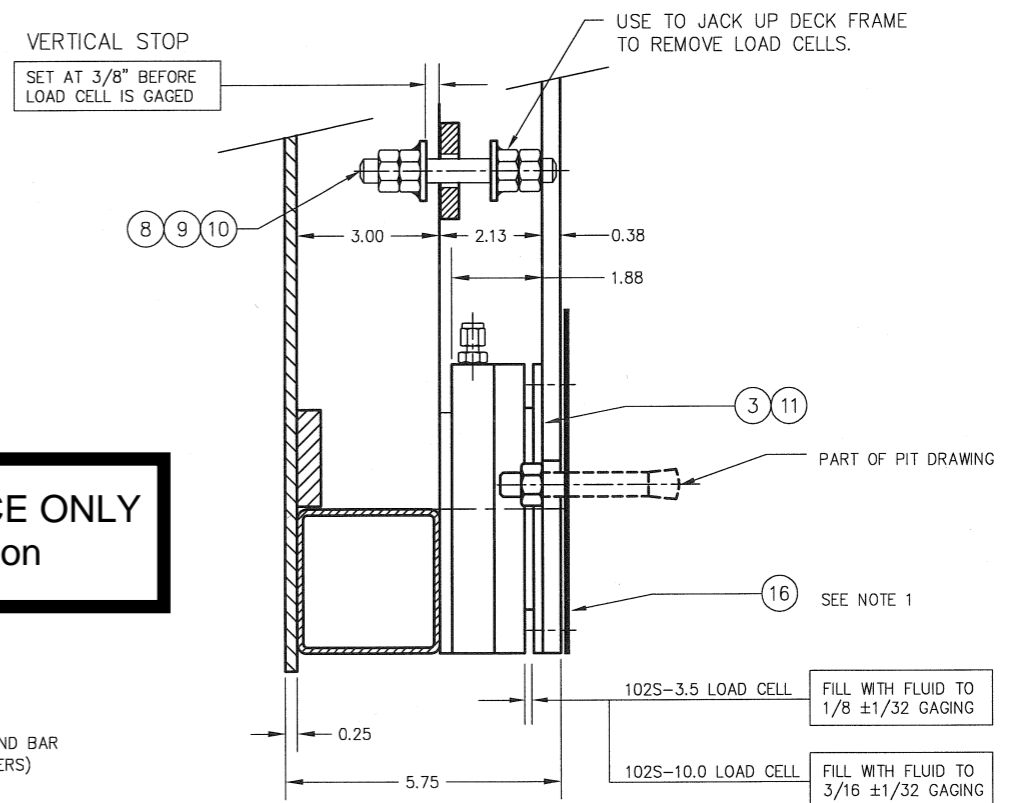


DASH NO.	LOAD CELL MODEL NO.	SCALE MODEL NO.	DEAD WEIGHT	CAPACITY	ITEM NO.	DESCRIPTION	QTY	MATERIAL	UNIT WT.	PART NO.	SIZE	WT.
D-34497-1	B-34326-2 102S-03.5-M1	709-44-2	280 lb	2,000 LB 2,000 LB AXLE LOAD	1	REMOVABLE DECK	2	SS 304	70	C-32589-1, 0.18	(4 WAY SAFETY PLATE - OPTIONAL)	140
					2	DECK FRAME	1	SS 304	137	D-35784-1	137	
D-34497-2	B-34321-1 102S-10.0-M2	709-44-5	325 lb	5,000 LB 4,000 LB AXLE LOAD	1	REMOVABLE DECK	2	SS 304	93	C-32589-2, 0.25	(4 WAY SAFETY PLATE - OPTIONAL)	186
					2	DECK FRAME	1	SS 304	137	D-35784-1	137	
D-34497-3	B-34321-1 102S-10.0-M2	709-44-10	325 lb	10,000 LB 4,000 LB AXLE LOAD	3	LOAD CELL	4	SS 304	5	SEE TABLE	1.88 HEIGHT	20
					4	BASE FRAME	1	SS 304	80	D-34499	80	
5												
6												
7												
8						VERTICAL STOP THRD ROD	4	SS 304		0.500-20 UNF X 4.00		
9						HN	40	SS 304		0.500-20 UNF	5020HNSS	
10						VS HEX NUT WELDMENT	8	SS 304		A-35703		
11						SHCS	8	SS 304		0.250-20 UNC-2A X 0.50	2520SHCS0050SS	
12						UNION	4	SS 316		SS-200-6	SWAGELOK OR EQUAL	
13												
14						STAYBAR	4	SS 304		0.500-20 UNF X 20.00		
15						SPHERICAL WASHER	16	SS 304		A-34509	0.500 ID	
16						SHIM	4	SS 304		0.06 X 6.00 X 7.00		
17						PIT ARRANGEMENT	4	SS 304		D-34500		

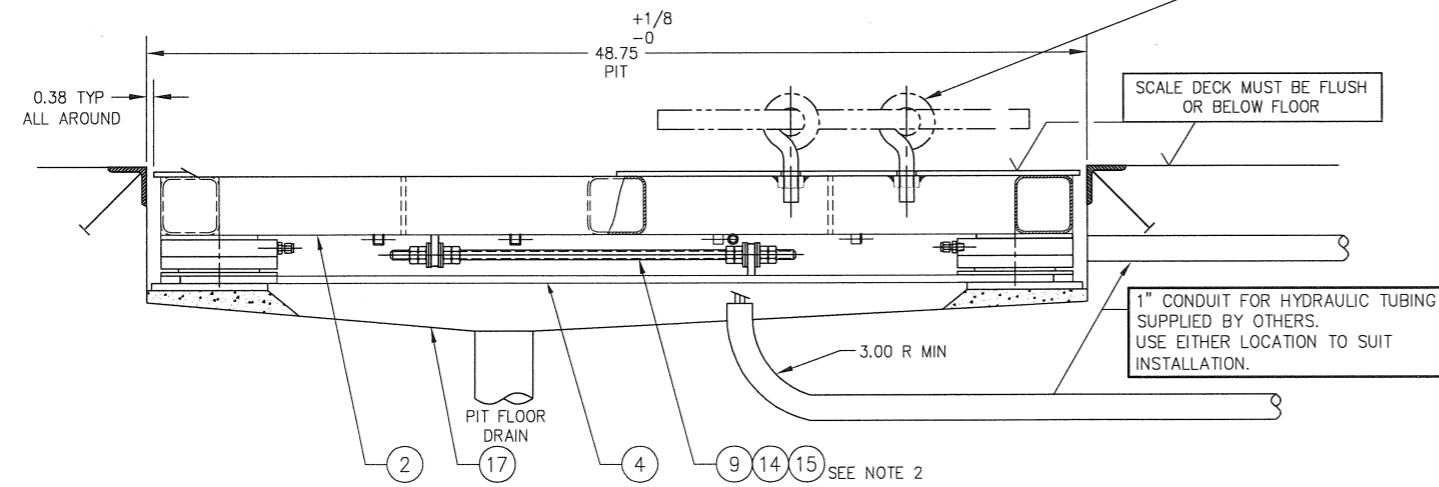


**FOR REFERENCE ONLY**  
Not for Construction



MAINTAIN SERVICE LOOP FOR EACH LOAD CELL

0.750-10 UNC EYEBOLTS AND BAR FOR DECK LIFTING (BY OTHERS)



- NOTES:
- ADD SHIMS AS REQUIRED UNDER SCALE BASE FRAME AND TACK WELD.
  - FACTORY ADJUSTED STAYBARS. (STAYBARS SHOULD BE ADJUSTED TO TURN FREELY WITH MINIMAL AXIAL MOVEMENT. NUTS ARE SET WITH REMOVABLE THREAD LOCK.)

H	-2 B-34321-1 WAS B-34326-2	5/20/04	CBM
G	-3 ADDED	10/29/03	CBM
F	ITEM 2, D-35784-1 WAS D-34498-1 (FOR D-34498-1 & -2). ADDED 0.25 DIM. ON THE TABLE B-34326-2 WAS B-34326.	05/09/03	GMR
E	CORNERS & ITEMS 8 & 14 MODIFIED	10/25/00	CBM
D	ALIGNMENT PINS DELETED	6/98	JDS
C	OPTIONAL BASE PLATE REMOVED	12/96	JDS
B	VERT. STOP RELOCATED	9/95	JDS
A	HANDLE ADDED	3/95	JDS

THIS DRAWING IS THE PROPERTY EMERY WINSLOW SCALE COMPANY SEYMOUR, CONNECTICUT. THE INFORMATION CONTAINED HEREIN IS CONFIDENTIAL AND IS NOT TO BE USED OR DISSEMINATED TO OTHERS WITHOUT THE EXPRESS WRITTEN CONSENT OF EMERY WINSLOW SCALE COMPANY.

EMERY WINSLOW SCALE COMPANY  
SEYMOUR, CT U.S.A. TERRE HAUTE, IN.

SCALE ASSEMBLY  
MODEL 709-44  
REMOVABLE DECK

DRAWN JDS DATE 2/26/95

CHECKED DATE

ACAD FILENAME: AC00269

LAYERS USED: 7,8,9,10,11

SCALE 1:5

FIRST USED ON

DRAWING NO. D-34497-

REV. H