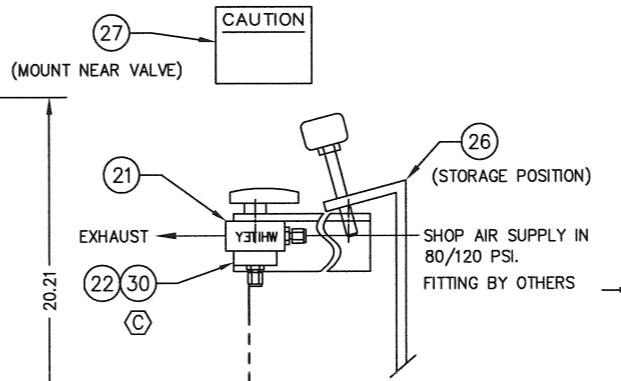
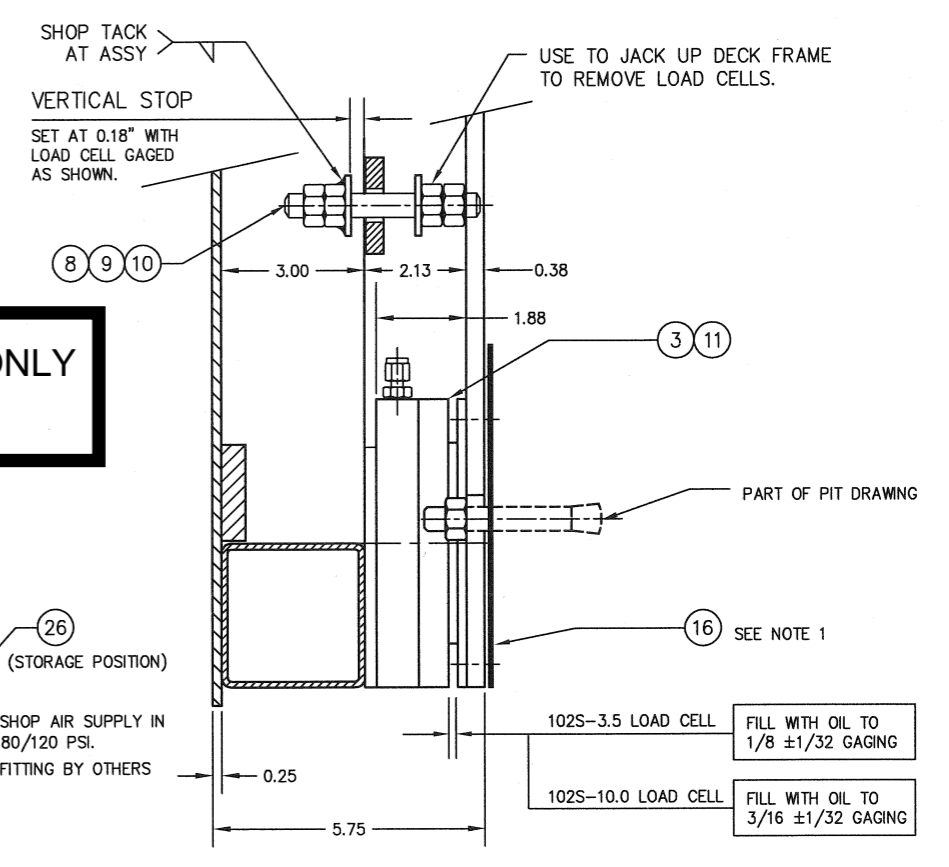


DASH NO.	LOAD CELL MODEL NO.	SCALE MODEL NO.	DEAD WEIGHT	CAPACITY
D-35790-1	102S-10.0-M2 B-34321-1	709-55-5	509 LB.	5,000 LB 4,000 LB AXLE LOAD
D-35790-2	102S-10.0-M2 B-34321-1	709-55-10	587 LB.	10,000 LB 8,000 LB AXLE LOAD
D-35790-3	SEE SEPARATE DRAWING FOR 709-55-15			

ITEM NO.	DESCRIPTION	QTY	MATERIAL	UNIT WT.	PART NO.	SIZE	WT.
1	PNEUMATIC LIFT DECK	1 EA	SS 304		D-34535 (RH), D-34535-1 (LH), 0.25 (4-WAY SAFETY PLATE - OPTIONAL)		282
2	DECK FRAME	1	SS 304		D-35791-1		207
1	PNEUMATIC LIFT DECK	1 EA	SS 304		D-34535 (RH), D-34535-1 (LH), 0.25 (4-WAY SAFETY PLATE - OPTIONAL)		282
2	DECK FRAME	1	SS 304		D-35791-2		285
3	LOAD CELL	4	SS 304	5	SEE TABLE	1.88 HEIGHT	20
4	BASE FRAME	1	SS 304		D-34430		106
5							
6							
7							
8	VERTICAL STOP THRD ROD	4	SS 304		0.500-20 UNF X 3.5		
9	HN	48	SS 304		0.500-20 UNF	5020HNSS	
10	FW	8	SS 304		0.500	50FWSS	
11	SHCS	8	SS 304		0.250-20 UNC X 0.50	2520SHCS0050SS	
12	UNION	4	SS 316		SS-200-6	SWAGelok OR EQUAL	
13	CYLINDER CLEVIS WELDMENT	4	SS 304		A-35594		
14	STAYBAR	4	SS 304		0.500-20 UNF X 20.00		
15	SPHERICAL WASHER	16	SS 304		A-34509	0.500	
16	SHIM	4	SS 304		0.06 X 6 X 7		
17	PIT ARRANGEMENT	A/R			D-34534		
18	PNEUMATIC LIFT CYLINDER	4	SS 316		US22436	2.50 DIA X 5.00 STROKE	SMC CORP.
19	ROD CLEVIS	4	SS 304		A-34541-2	M18 X 1.5	
20	QUICK RELEASE PIN	8	SS 303		98404377	0.38 DIA X 1.2 GRIP LENGTH	MASTER CARR
21	MOUNTING BRACKET	1	SS 304		A-34544	2.00 X 2.00 X 0.19 X 5.00	
22	BALL VALVE 3-WAY	1	BRASS		B43XF4		WHITEY
23	MALE RUN TEE	3	SS 316		SS-200-3-4 TMT		SWAGelok OR EQUAL
24	MALE CONNECTOR	1	SS 316		SS-200-1-2		SWAGelok OR EQUAL
25	SPACER BAR	1	SS 304		B-34549-2	60.13 X 2.00 X 0.31	
26	SAFETY BAR	1	SS 304		B-34548-2		
27	CAUTION SIGN	1	ALUM		A-34550		
28	VENT	4	CS/NIPL		BV-1	0.125 NPT	UNIVERSAL COMPONENTS INC.
29	HHCS	16	SS 304		M10 X 1.5 X 20mm (0.75)	PART OF ITEM 18	
30	MALE CONNECTOR	1	SS 316		SS-200-1-4		SWAGelok OR EQUAL

**FOR REFERENCE ONLY**  
Not for Construction



- NOTES:
- ADD SHIMS AS REQUIRED UNDER SCALE BASE FRAME AND TACK WELD.
  - FACTORY ADJUSTED STAYBARS. (STAYBARS SHOULD BE ADJUSTED TO TURN FREELY WITH MINIMAL AXIAL MOVEMENT. NUTS ARE SET WITH REMOVABLE THREAD LOCK.)
  - FULLY CLOSED: "A" = 14.25

ITEM NO.	REVISION	DATE	BY
D	ITEM 14, STAYBAR 0.500-20 UNF X 20.00 WAS 0.500-20 UNF X 21.00	09/30/03	GMR
C	ON BOM, ADDED ITEM 30 IN F/O ITEM 30 WAS 24.	07/25/03	GMR
B	ADDED ITEM 13, ITEM 29, QTY 16 WAS 4	06/02/03	GMR
A	ITEM 25, 60.13 X 2.00 X 0.31 WAS 60.13 X 2.00 X 0.25	04/30/03	GMR

THIS DRAWING IS THE PROPERTY OF EMERY WINSLOW SCALE COMPANY SEYMOUR, CONNECTICUT. THE INFORMATION CONTAINED HEREIN IS CONFIDENTIAL AND IS NOT TO BE USED OR DISSEMINATED TO OTHERS WITHOUT THE EXPRESS WRITTEN CONSENT OF EMERY WINSLOW SCALE COMPANY.

EMERY WINSLOW SCALE COMPANY  
SEYMOUR, CT U.S.A. TERRE HAUTE, IN.

SCALE ASSEMBLY  
MODEL 709-55-  
WITH PNEUMATIC LIFT DECK  
SS 316 AIR CYLINDER

SCALE 1:5  
FIRST USED ON D-35790-  
REV. D