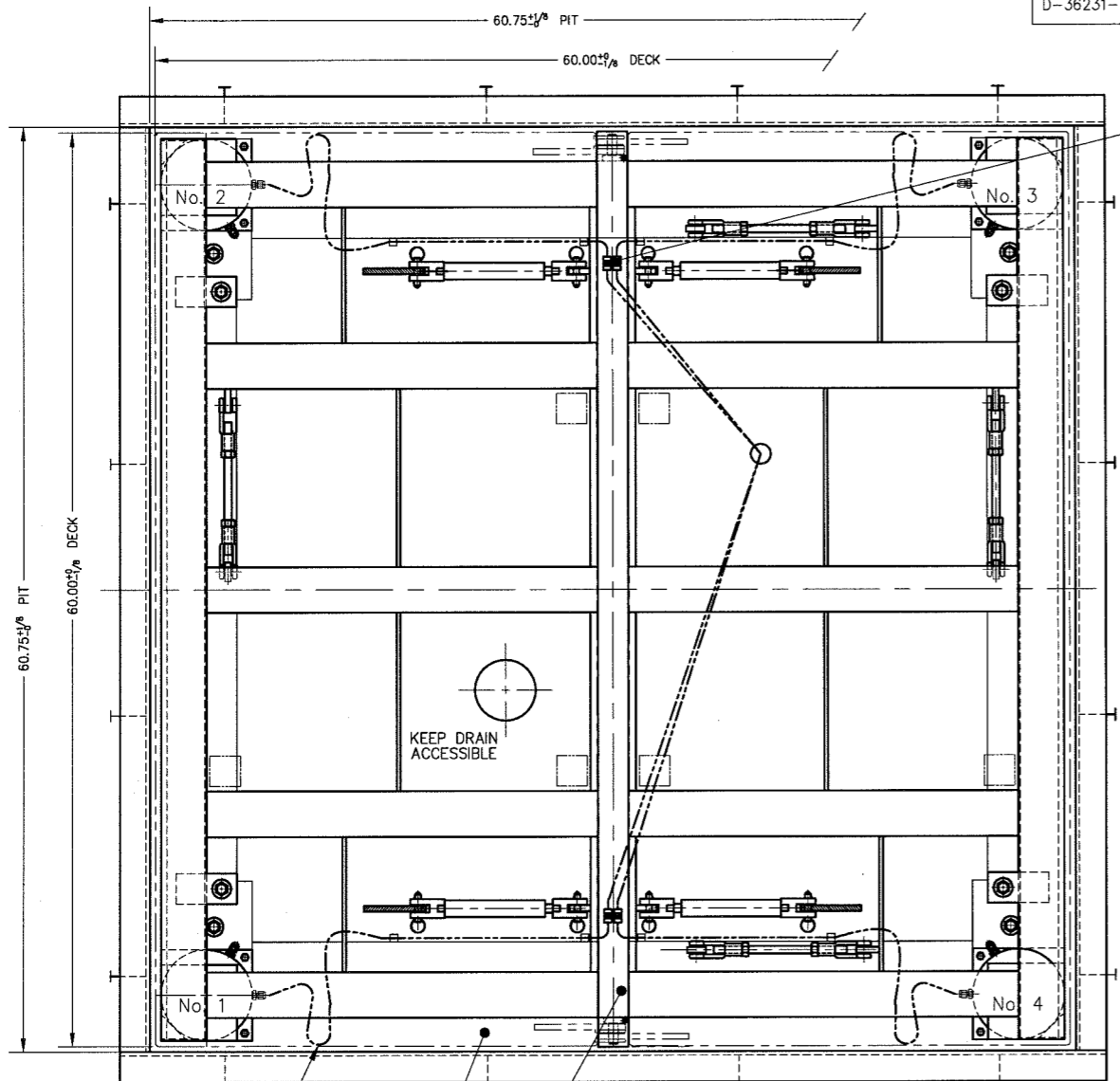


| DASH NO. | LOAD CELL MODEL NO. | SCALE MODEL NO. | DEAD WEIGHT | CAPACITY |
|-----------|------------------------|-----------------|-------------|------------------------------|
| D-36231-1 | 102S-10.0-M2 B-34321-1 | 709-55-5 | 509 lb | 5,000 lb 4,000 lb AXLE LOAD |
| D-36231-2 | 102S-10.0-M2 B-34321-1 | 709-55-10 | 587 lb | 10,000 lb 8,000 lb AXLE LOAD |
| D-36231-3 | SEE SEPARATE DRAWING | | | |

| ITEM NO. | DESCRIPTION | QTY | MATERIAL | UNIT WT. | PART NO. | SIZE | WT. |
|----------|--------------------------|-----|----------|----------|-------------------|---|----------------------------|
| 1 | DECK FRAME | 1 | SS 304 | | D-36233-1 | | 199 |
| 1 | DECK FRAME | 1 | SS 304 | | D-36233-2 | | 238 |
| 2 | LIFT DECK SET | 1 | SS 304 | | D-36234 | PLATE AS PER FACTORY ORDER | 272 |
| 3 | BASE FRAME | 1 | SS 304 | | D-36232 | | 101 |
| 4 | LOAD CELL | 4 | SS 304 | | SEE TABLE | | |
| 5 | ROD CLEVIS | 8 | SS 304 | | A-34541-3 | M10 X 1.5 | |
| 6 | ROD CLEVIS | 8 | SS 304 | | 2806SS | 0.500-20 UNF MIDWEST CONTROL PRODUCTS CORP. | |
| 7 | STAYBAR | 4 | SS 304 | | | 0.500-20 UNF X 8.75 | |
| 8 | CLEVIS PIN | 8 | SS 303 | | 92390A382 | 0.50 DIA X 1.19 GRIP LENGTH | McMASTER CARR |
| 9 | HAIRPIN COTTER | 8 | SS 304 | | 92391A130 | 0.25 - 0.38 SHAFT 1.18 OL | McMASTER CARR |
| 10 | SPACER BAR | 1 | SS 304 | | B-36246-2 | | |
| 11 | VERTICAL STOP THRD ROD | 4 | SS 304 | | | 0.500-20 UNF X 4.00 | |
| 12 | VS HEX NUT WELDMENT | 8 | SS 304 | | A-35703 | | |
| 13 | HEX NUT, HALF | 16 | SS 304 | | | 0.500-20 UNF | |
| 14 | QUICK RELEASE PIN | 8 | SS 303 | | 98404A372 | 0.38 DIA X 1.2 GRIP LENGTH | McMASTER CARR |
| 15 | UNION | 4 | SS 316 | | SS-200-8 | | SWAGelok OR EQUAL |
| 16 | SHIM | 4 | SS 304 | | | 0.06 X 6.00 X 7.00 | |
| 17 | HHCS | 8 | SS 304 | | | 0.250-20 UNC X 0.50 | |
| 18 | FHSCS | 8 | SS 304 | | | 0.250-20 UNC X 0.50 | |
| 19 | LASH | 4 | SS 304 | | A-35557 | | |
| 20 | GAS SPRING FOR 0.25 DECK | 4 | SS 316 | | 1165-SSHD-2.5-360 | | (REF B-35517-2) AMERI TOOL |
| 20 | GAS SPRING FOR 0.38 DECK | 4 | SS 316 | | 1165-SSHD-2.5-470 | | (REF B-35517-2) AMERI TOOL |
| 21 | EYE BOLT | 2 | CS | | | 0.625-11 X 1.75 | 313152 McMASTER CARR |
| 22 | PIT ARRANGEMENT | 1 | | | D-3411B | | |



15
TUBING EXIT FOR LOAD CELLS USE FABRIC WIRE MARKERS

2
DECK LIFTING

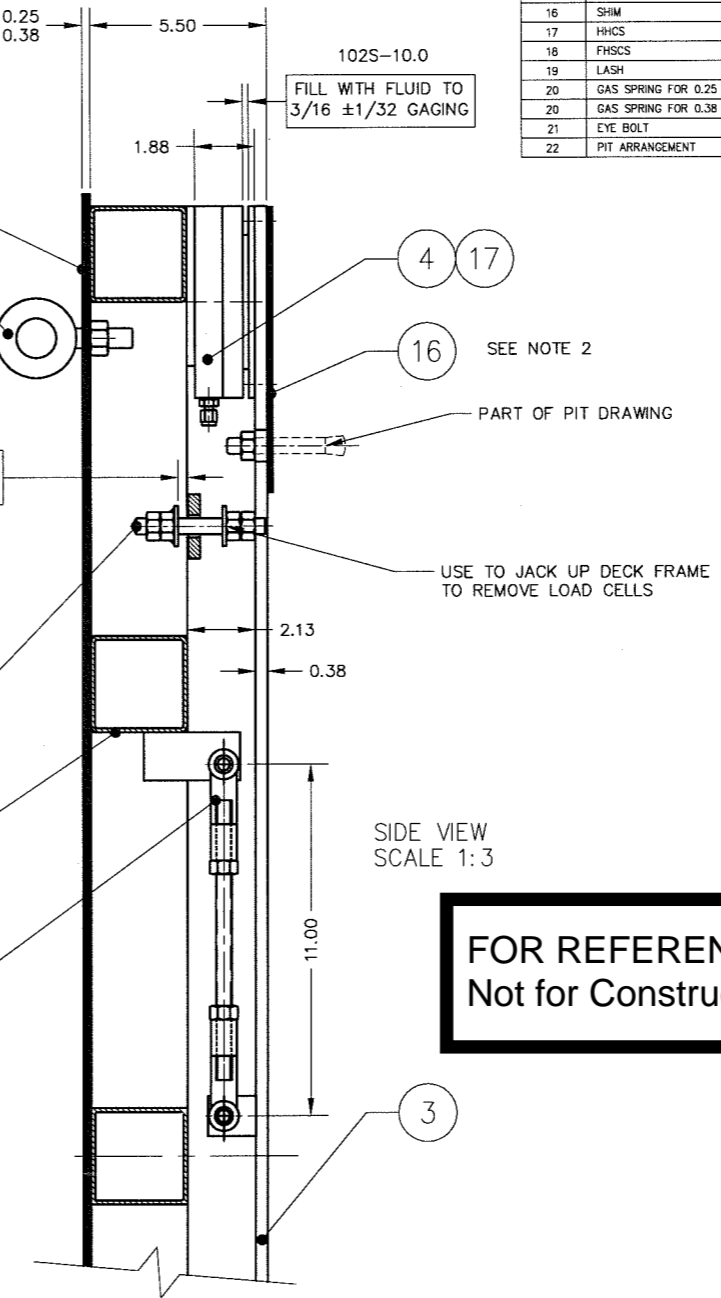
21

VERTICAL STOP
SET AT 3/8" BEFORE LOAD CELL IS GAGED

11
12 13

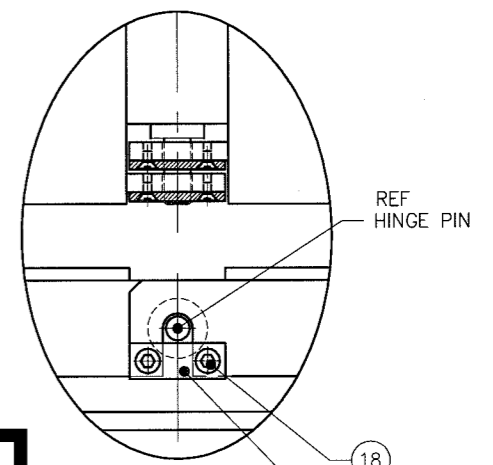
1

6 7 8 9 13

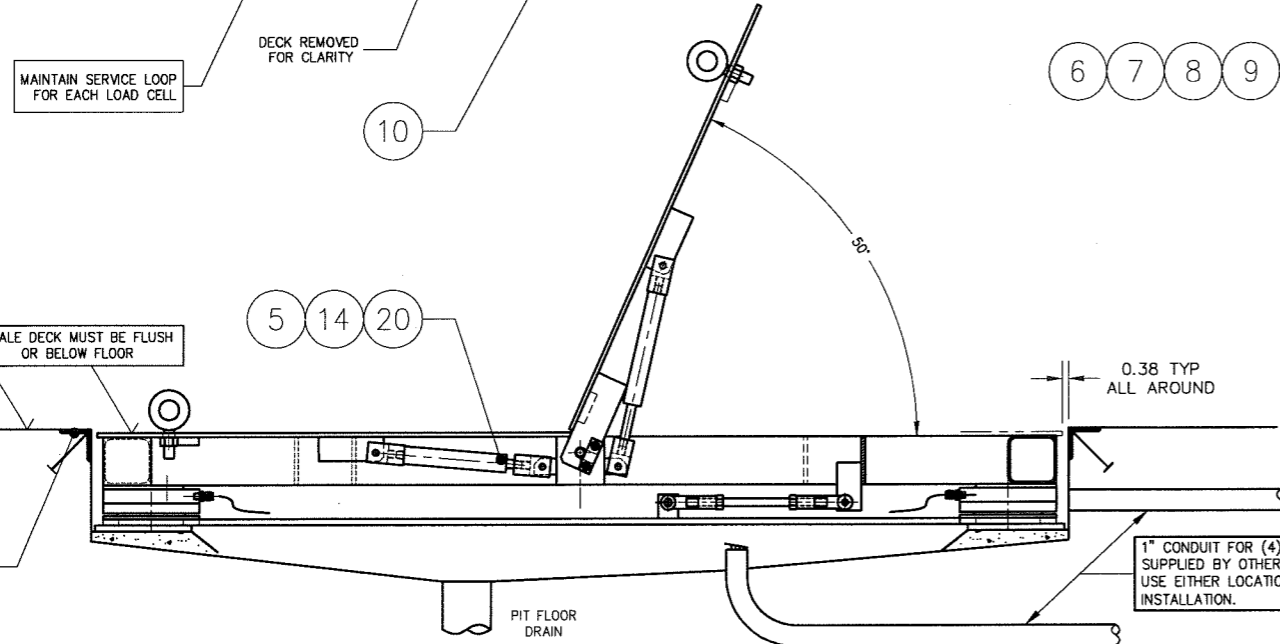


SIDE VIEW
SCALE 1:3

FOR REFERENCE ONLY
Not for Construction



HINGE VIEW
SCALE 1:3



- SCALE MUST BE PLACED INTO PIT WITH DECK SET ASSEMBLED.
- ADD SHIMS AS REQUIRED UNDER SCALE BASE FRAME & TACK WELD.
- OPENING HAND FORCE 45 lb.
- FINISH: WHITE SAND BLAST TO (125 MIC).
- SEE PRODUCTION CONTROL DRAWING D-35654.

| REV | DESCRIPTION | DATE | BY | DEBURR ALL CORNERS AND EDGES | EMERY WINSLOW SCALE COMPANY |
|--|------------------|---------|-----|--|-------------------------------------|
| B | REVISED | 6/05 | CBM | DIMENSIONS ARE IN INCHES. TOLERANCES UNLESS SPECIFIED OTHERWISE: MACHINING .XX = ± .01 .XXX = ± .005 | SEYMOUR, CT U.S.A TERRE HAUTE, IN. |
| A | SPACER BAR ADDED | 5/18/05 | CBM | | |
| THIS DRAWING IS THE PROPERTY OF EMERY WINSLOW SCALE COMPANY SEYMOUR, CONNECTICUT. THE INFORMATION CONTAINED HEREIN IS CONFIDENTIAL AND IS NOT TO BE USED OR DISSEMINATED TO OTHERS WITHOUT THE EXPRESS WRITTEN CONSENT OF EMERY WINSLOW SCALE COMPANY. | | | | DRAWN: CBM DATE: 4/11/05 | SCALE FIRST USED ON DRAWING NO. REV |
| | | | | CHECKED: DATE: ACAD FILENAME: L0-L8 | 1:6 D-36231 B |