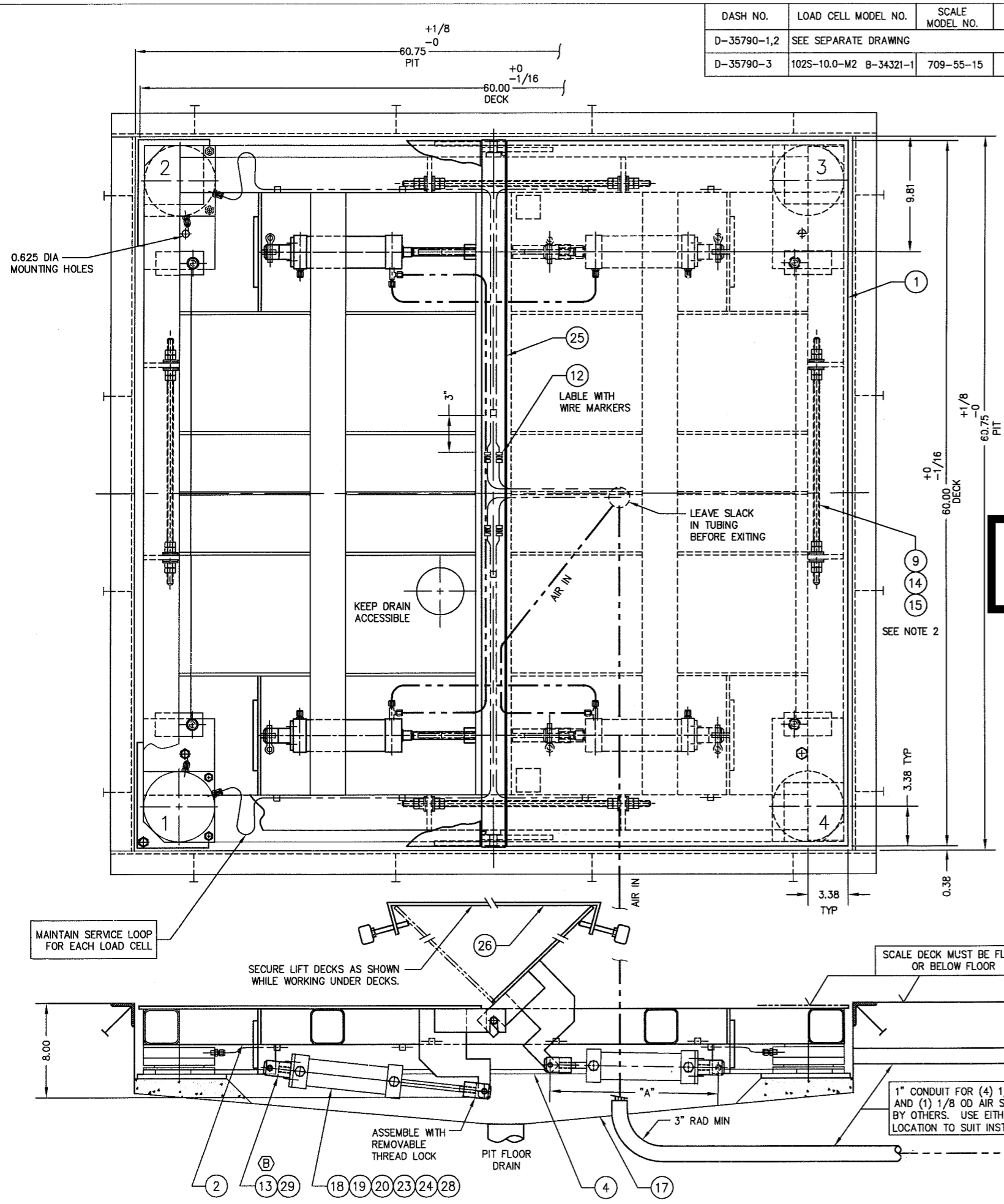
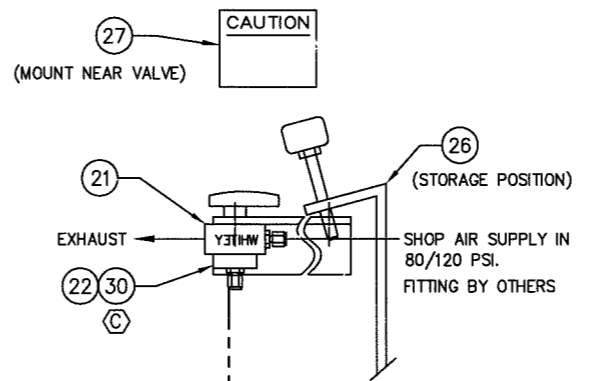
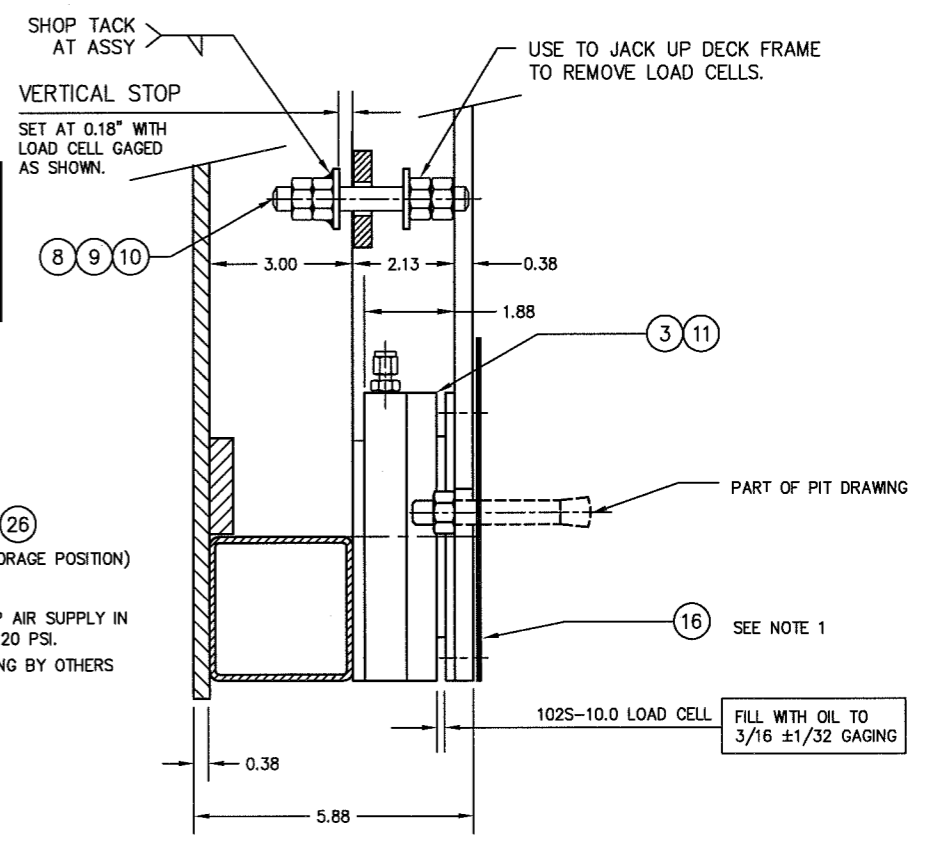


DASH NO.	LOAD CELL MODEL NO.	SCALE MODEL NO.	DEAD WEIGHT	CAPACITY	ITEM NO.	DESCRIPTION	QTY	MATERIAL	UNIT WT.	PART NO.	SIZE	WT.
D-35790-1,2	SEE SEPARATE DRAWING											
D-35790-3	102S-10.0-M2 B-34321-1	709-55-15	787 LB.	15,000 LB 8,000 LB AXLE LOAD	1	PNEUMATIC LIFT DECK	1 EA	SS 304	216	D-34535 (RH), D-34535-1 (LH), 0.38 (4-WAY SAFETY PLATE - OPTIONAL)		432
					2	DECK FRAME	1	SS 304		D-35791-3		335
					3	LOAD CELL	4	SS 304	5		1.88 HEIGHT	20
					4	BASE FRAME	1	SS 304		D-34430		106
					5							
					6							
					7							
					8	VERTICAL STOP THRD ROD	4	SS 304		0.500-20 UNF X 4.00		
					9	HN	48	SS 304		0.500-20 UNF	5020HNSS	
					10	FW	8	SS 304		0.500	50FWSS	
					11	SHCS	8	SS 304		0.250-20 UNC X 0.50	2520SHCS0050SS	
					12	UNION	4	SS 316		SS-200-6	SWAGelok OR EQUAL	
					13	CYLINDER CLEVIS WELDMENT	4	SS 304		A-35594		
					14	STAYBAR	4	SS 304		0.500-20 UNF X 20.00		
					15	SPHERICAL WASHER	16	SS 304		A-34509	0.500	
					16	SHIM	4	SS 304		0.06 X 6 X 7		
					17	PIT ARRANGEMENT	A/R			D-34534-1		
					18	PNEUMATIC LIFT CYLINDER	4	SS 316		US22436	2.50 DIA X 5.00 STROKE	SMC CORP.
					19	ROD CLEVIS	4	SS 304		A-34541-2	M18 X 1.5	
					20	QUICK RELEASE PIN	8	SS 303		98404A372	0.38 DIA X 1.2 GRIP LENGTH	McMASTER CARR
					21	MOUNTING BRACKET	1	SS 304		A-34544	2.00 X 2.00 X 0.19 X 5.00	
					22	BALL VALVE 3-WAY	1	BRASS		B43XF4	WHITEY	
					23	MALE RUN TEE	3	SS 316		SS-200-3 TMT	SWAGelok OR EQUAL	
					24	MALE CONNECTOR	1	SS 316		SS-200-1-2	SWAGelok OR EQUAL	
					25	SPACER BAR	1	SS 304		B-34549-5	60.13 X 2.00 X 0.38	
					26	SAFETY BAR	1	SS 304		B-34548-2		
					27	CAUTION SIGN	1	ALUM		A-34550		
					28	VENT	4	CS/NIPL		BV-2	0.250NPT	UNIVERSAL COMPONENT INC.
					29	HHCS	16	SS 304		M10 1.5 X 20 mm (0.75)	PART OF ITEM 18	
					30	MALE CONNECTOR	1	SS 316		SS-200-1-4	SWAGelok OR EQUAL	



FOR REFERENCE ONLY
Not for Construction



- NOTES:
- ADD SHIMS AS REQUIRED UNDER SCALE BASE FRAME AND TACK WELD.
 - FACTORY ADJUSTED STAYBARS. (STAYBARS SHOULD BE ADJUSTED TO TURN FREELY WITH MINIMAL AXIAL MOVEMENT. NUTS ARE SET WITH REMOVABLE THREAD LOCK.)
 - FULLY CLOSED: "A" = 14.25

REVISION	DATE	BY	DESCRIPTION
C	07/25/03	GMR	ON BOM. ADDED ITEM 30 ON F/D ITEM 30 WAS 24.
B	06/02/03	GMR	ADDED ITEM 13. ITEM 29, QTY 16 WAS 4.
A	04/30/03	GMR	ITEM 25, B-34549-5 WAS B-34549-2.

ALL SHARP CORNERS AND EDGES TO BE BROKEN	EMERY WINSLOW SCALE COMPANY SEYMOUR, CT U.S.A. TERRE HAUTE, IN.
UNLESS OTHERWISE SPECIFIED DIMENSIONS ARE IN INCHES DECIMALS FRACTIONS ANGLES XX ± .XX / ±	SCALE ASSEMBLY MODEL 709-55-15 WITH PNEUMATIC LIFT DECK SS 316 AIR CYLINDER
THIS DRAWING IS THE PROPERTY OF EMERY WINSLOW SCALE COMPANY. SEYMOUR, CONNECTICUT. THE INFORMATION CONTAINED HEREIN IS CONFIDENTIAL AND IS NOT TO BE USED OR DISSEMINATED TO OTHERS WITHOUT THE EXPRESS WRITTEN CONSENT OF EMERY WINSLOW SCALE COMPANY.	SCALE 1:5 FIRST USED ON D-35790-3 DRAWING NO. D-35790-3 REV. C