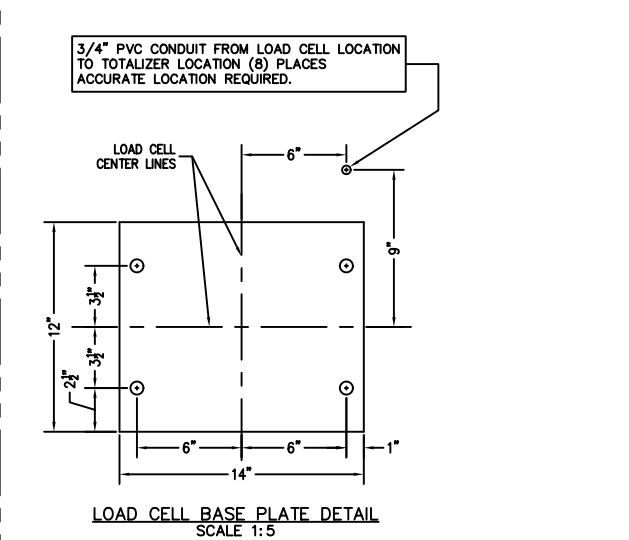
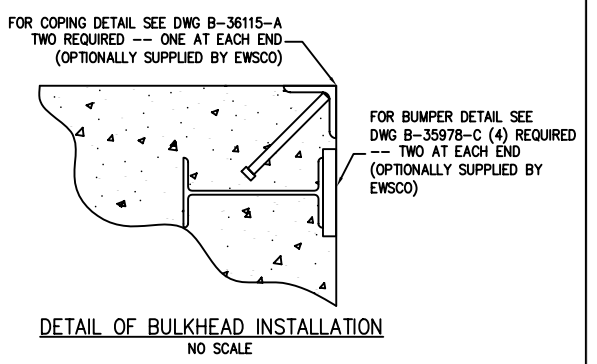
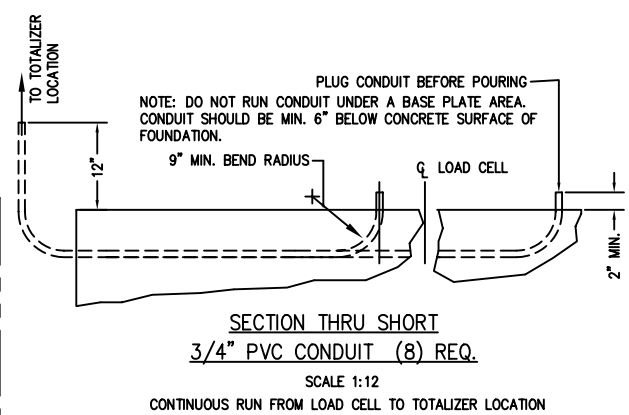
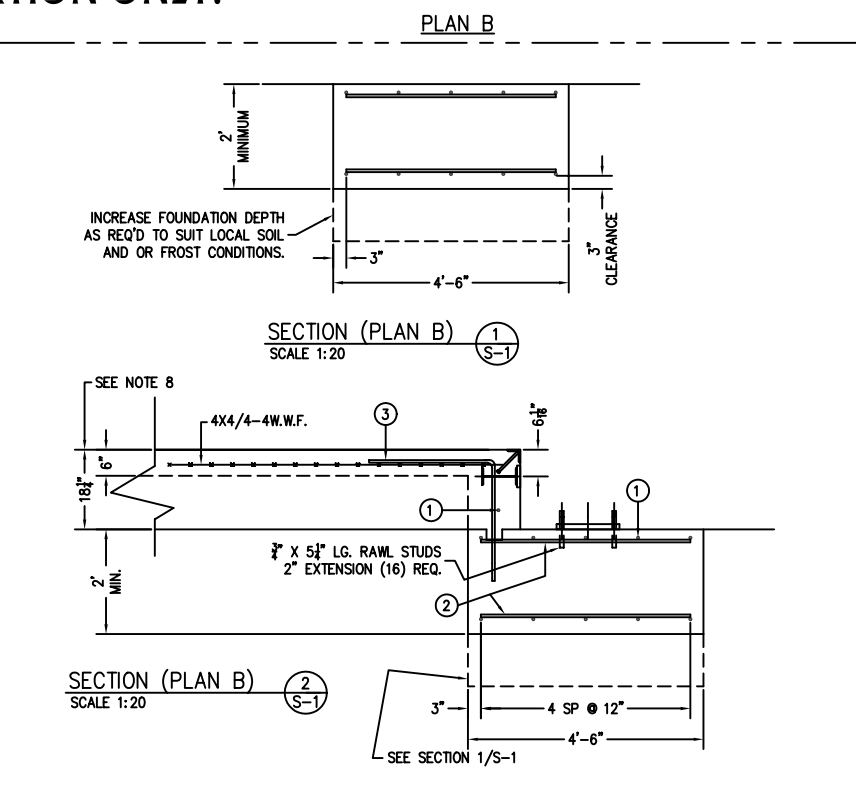
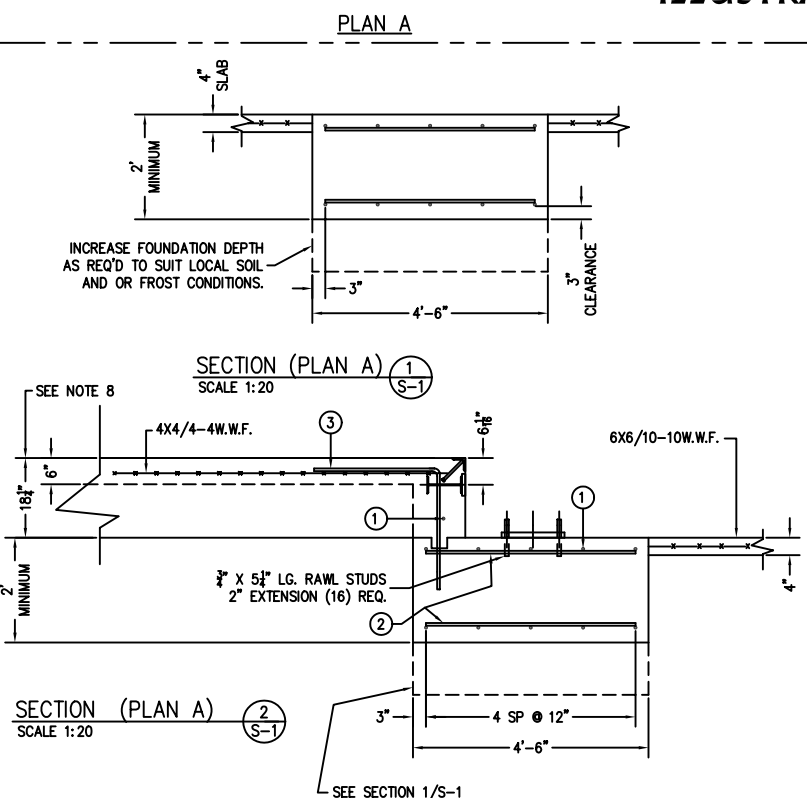


**PRELIMINARY NOT FOR CONSTRUCTION. FOR ILLUSTRATION ONLY.**



- FOR NON COMMERCIAL SCALES PROVIDE AN APPROACH OF 2 FEET MINIMUM LENGTH WHICH IS LEVEL AND IN SAME PLANE AS THE PLATFORM.
- FOR COMMERCIAL SCALES CHECK WITH LOCAL WEIGHTS AND MEASURES OFFICIALS BEFORE STARTING CONSTRUCTIONS. NATIONAL INSTITUTE OF STANDARDS AND TECHNOLOGY (NIST) HANDBOOK H44 REQUIRES:
- A STRAIGHT APPROACH OF AT LEAST ONE-HALF THE LENGTH OF THE PLATFORM.
  - NOT LESS THAN 10 FEET OF APPROACH ADJACENT TO THE PLATFORM TO BE CONSTRUCTED OF CONCRETE OR SIMILAR DURABLE MATERIAL AND BE LEVEL AND IN THE SAME PLANE AS THE PLATFORM.
- NOTES:**
- CONCRETE STRENGTH:  $f'_c = 4,000$  PSI @ 28 DAYS  
REINFORCING ROD:  $F_y = 60,000$  PSI, ASTM A615, GRADE 60
  - PIERS AS SHOWN ARE SIZED FOR 3,000 SQ.FT.
  - THE CONCRETE AND REBAR SPECIFICATIONS SHOWN ARE FOR A NATIONWIDE RANGE OF CONDITIONS AND MAY NEED MODIFICATION FOR LOCAL CONDITIONS.
  - APPROACH COPING(BULKHEAD) TO BE ON A COMMON PLANE WITHIN 1/4".
  - TOP OF REBAR MUST BE PLACED TO CLEAR THE ANCHOR BOLTS. ANCHOR BOLTS ARE TO BE INSTALLED AFTER FOUNDATION HAS CURED.
  - PIERS MUST BE INSTALLED WITH EXTREME CARE AND MUST NOT BE ALLOWED TO SHIFT.
  - THESE PLANS ARE NOT SUITABLE WHERE SOIL MIGRATION IS AN ISSUE. SOIL MUST BE STABLE AND NOT SUBJECT TO FLOODING OR OTHER POSSIBLE CAUSES OF SOIL MIGRATION THAT MAY RESULT IN SHIFTING OF THE PIERS.
  - BASE PLATES ARE NOT GROUTED. IF GROUTING IS REQUIRED ADD GROUT THICKNESS TO APPROACH DEPTH SHOWN.

MATERIAL REQUIREMENTS		TOTAL WT. OF REBAR		926
<b>PLAN A:</b>				
CONCRETE:				
APPROACHES	7 CU. YDS			
FOUNDATION 'A'	23 CU. YDS			
REINFORCING:				
REBAR 'A'	926			
4X4/4-4WWF	240 SQ FT			
6X6/10-10WWF	527 SQ FT			
PIECE NO.	QTY	BAR SIZE	LENGTH & DESCRIPTION	WT.
3	24	4	4'-0" 2'-0"	64
2	80	5	4'-0"	334
1	44	5	11'-6"	528

MATERIAL REQUIREMENTS		TOTAL WT. OF REBAR		926
<b>PLAN B:</b>				
CONCRETE:				
APPROACHES	7 CU. YDS			
FOUNDATION 'B'	16 CU. YDS			
REINFORCING:				
REBAR 'B'	926			
4X4/4-4WWF	240 SQ FT			
PIECE NO.	QTY	BAR SIZE	LENGTH & DESCRIPTION	WT.
3	24	4	4'-0" 2'-0"	64
2	80	5	4'-0"	334
1	44	5	11'-6"	528

ALL SHARP CORNERS AND EDGES TO BE BROKEN

UNLESS OTHERWISE SPECIFIED DIMENSIONS ARE IN INCHES

REVISION	DATE	BY
A	08/09	GEM

THIS DRAWING IS THE PROPERTY OF EMERY WINSLOW SCALE COMPANY, SEYMOUR, CONNECTICUT. THE INFORMATION CONTAINED HEREIN IS CONFIDENTIAL AND IS NOT TO BE USED OR DISSEMINATED TO OTHERS WITHOUT THE EXPRESS WRITTEN CONSENT OF EMERY WINSLOW SCALE COMPANY.

SCALE: 1:30

FIRST USED ON: D-72599

DRAWING NO.: 72599

REV.: A

EMERY WINSLOW SCALE COMPANY  
SEYMOUR, CT U.S.A. TERRE HAUTE, IN.

ALTERNATE FOUNDATION FOR H84-10060-11SD-TA, 100 TON 60" X 11" ROADWEIGH II

FULL SIZE PLOT D-24X36