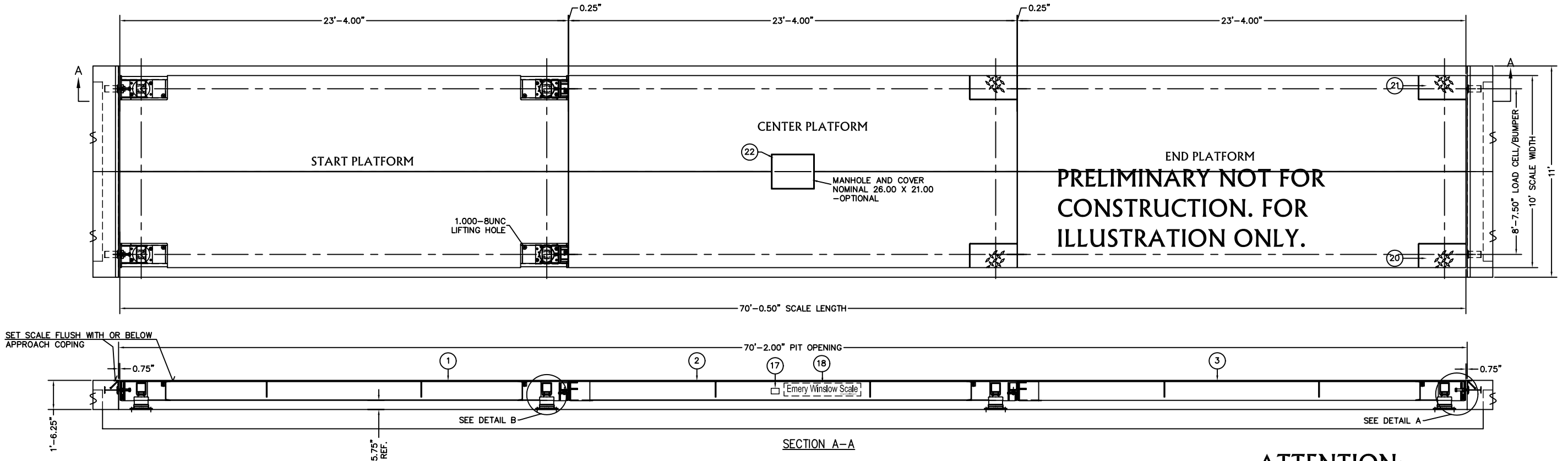


DECK PLATE THICKNESS CHART						
DASH NO.	A	B	C	ITEM 1 START PL. WT.	ITEM 2 CENTER PL. WT.	ITEM 3 END PL. WT.
	1/4"	1'-5.25"	0.25"	8114	7954	8020
-1	5/16"	1'-5.31"	0.19"	8771	8611	8677
-2	3/8"	1'-5.38"	0.13"	9427	9267	9333

PRELIMINARY NOT FOR CONSTRUCTION. FOR ILLUSTRATION ONLY.

ITEM NO.	DESCRIPTION	QTY	MATERIAL	UNIT WT.	PART NO.	SIZE	WT.	ITEM NO.	DESCRIPTION	QTY	MATERIAL	UNIT WT.	PART NO.	SIZE	WT.
1	START PLATFORM	1	SEE ASS'Y	see chart	D-72135-A		see chart	12	HHCS	24	SS	-		0.50-13UNC X 1.25	-
2	CTR PLATFORM	1	SEE ASS'Y	see chart	D-72136-A		see chart	13	MS FLAT WASHER	24	SS	-		FOR 0.5006, ONE PER CLAMP	-
3	END PLATFORM	1	SEE ASS'Y	see chart	D-72137-A		see chart	14	ANCHOR BOLT	16	ASTM A36	-	#7446	0.750 X 7.00	-
4	LOAD CELL	8	SEE ASS'Y	63.00	D-29547-2	136-75-CH; NTEP NP. 88-239-P	504	15	HHCS	4	GR. 8	-		1.25-7UNC X 6.00 FULL THREAD, ZN PL	-
5	APPROACH COPING	2	SEE ASS'Y	84.00	B-35979-A	OPTIONALLY SUPPLIED BY EWSCO	168	16	TRI-LOCK NUT	4	GR. 2H	-		1.25-7UNC, ZN PL	-
6	BASE PLATE	8	ASTM A36	35.70	B-35931-D		286	17	SERIAL NUMBER PLATE	1	SS	-	B-34821-D		-
7	CENTERING RING	8	A/R	1.50	B-29871-E		12	18	EWSCO DECAL	2	-	-	A-35412-A	8.00 X 48.00	-
8	SHIM	24	SS	0.50	A-29869-1-D	0.06 THICK	12	19	CHECK BOLT BUMPER	4	SEE ASS'Y	10.00	B-35978-C	OPTIONALLY SUPPLIED BY EWSCO	40
9	SHIM	16	SS	0.30	A-29869-2-D	0.03 THICK	5	20	COVER PLATE, RIGHT	4	ASTM A36	-	B-36465-B		-
10	HHCS	32	SS	-	-	0.375-13UNC X 1.25	-	21	COVER PLATE, LEFT	4	ASTM A36	-	B-36466-B		-
11	CLAMP	24	CS, ZN PL	-	A-29870-2-B		-	22	MANHOLE	A/R	ASTM A36	-	B-36488	OPTIONALLY SUPPLIED BY EWSCO	-



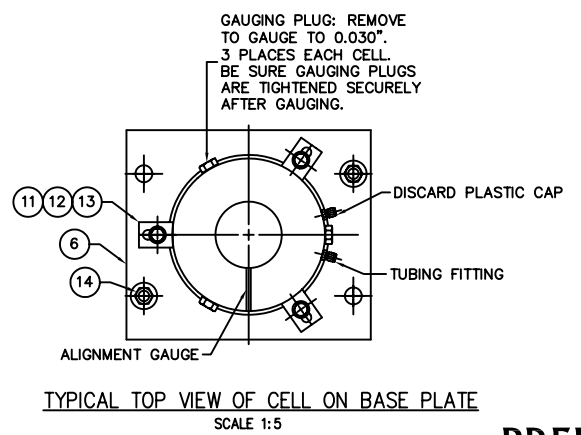
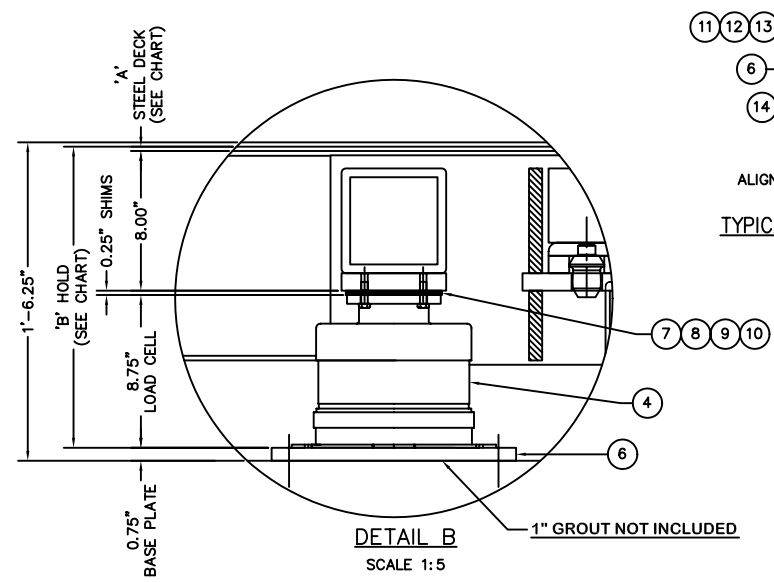
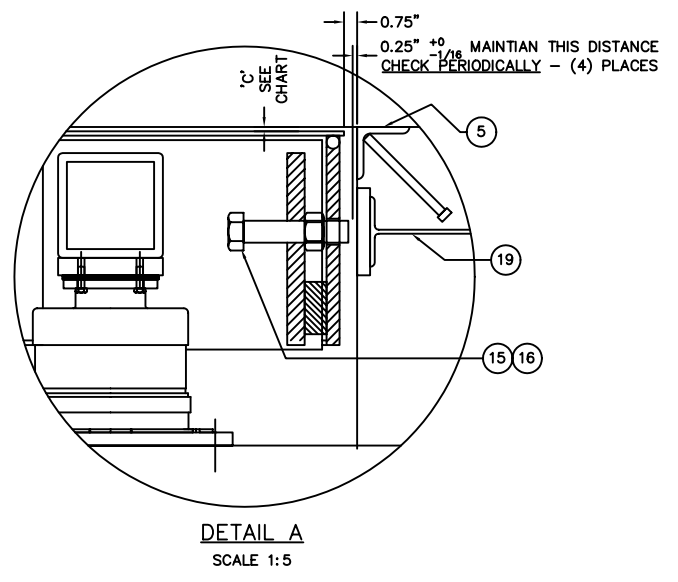
PRELIMINARY NOT FOR CONSTRUCTION. FOR ILLUSTRATION ONLY.

PRELIMINARY NOT FOR CONSTRUCTION. FOR ILLUSTRATION ONLY.

ATTENTION:
SEE NOTE 1 ON INSTALLATION
DRAWING # D-36118

FOR NON COMMERCIAL SCALES PROVIDE AN APPROACH OF 2 FEET MINIMUM LENGTH WHICH IS LEVEL AND IN SAME PLANE AS THE PLATFORM.
FOR COMMERCIAL SCALES CHECK WITH LOCAL WEIGHTS AND MEASURES OFFICIALS BEFORE STARTING CONSTRUCTIONS.
NATIONAL INSTITUTE OF STANDARDS AND TECHNOLOGY (NIST) HANDBOOK 44 REQUIRES:
A) A STRAIGHT APPROACH OF AT LEAST ONE-HALF THE LENGTH OF THE PLATFORM.
B) NOT LESS THAN 10 FEET OF APPROACH ADJACENT TO THE PLATFORM TO BE CONSTRUCTED OF CONCRETE OR SIMILAR DURABLE MATERIAL AND BE LEVEL AND IN THE SAME PLANE AS THE PLATFORM.

DRAWING REFERENCES:
D-72581-A SLAB FOUNDATION
D-72582-B ALTERNATE FOUNDATION
D-36118-D INSTALLATION INSTRUCTIONS
B-33069-G 4 SECTION TUBING DIAGRAM
NTEP NO. 89-185PA3
CLC = 58,000 LB CLASS III



PRELIMINARY NOT FOR CONSTRUCTION. FOR ILLUSTRATION ONLY.

ALL SHARP CORNERS AND EDGES TO BE BROKEN				EMERY WINSLOW SCALE COMPANY SEYMOUR, CT U.S.A. TERRE HAUTE, IN.			
B	REV'S UPDATED	11/08	CEM	UNLESS OTHERWISE SPECIFIED DIMENSIONS ARE IN INCHES			
A	REV'S UPDATED	10/08	CEM	MACHINING	FABRICATION		
LTR	REVISION	DATE	BY	05 ± 0.01	± .13		
THIS DRAWING IS THE PROPERTY OF EMERY WINSLOW SCALE COMPANY SEYMOUR, CONNECTICUT. THE INFORMATION CONTAINED HEREIN IS CONFIDENTIAL AND IS NOT TO BE USED OR DISSEMINATED TO OTHERS WITHOUT THE EXPRESS WRITTEN CONSENT OF EMERY WINSLOW SCALE COMPANY.				DRAWN	CEM	DATE	05/23/08
				CHECKED	DATE		
				ACAD FILENAME:	T02722		
				LAYERS USED:	ALL		
				SCALE	1:30	FIRST USED ON	DRAWING NO. D-72580-
				REV.	B		

FULL SIZE PLOT D-24X36