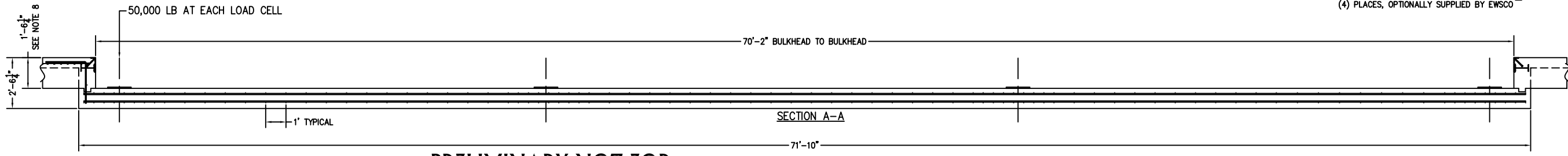


B-35979-A APPROACH COPING.  
(2) PLACES, (OPTIONALLY SUPPLIED BY EWSCO)

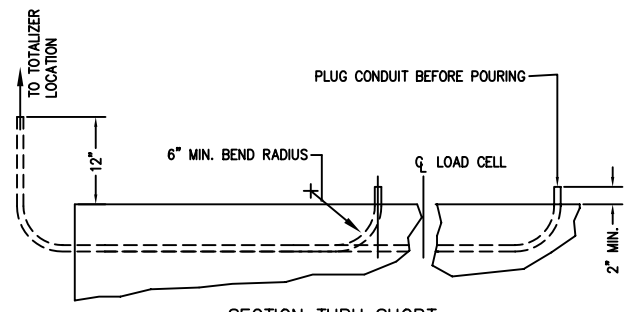
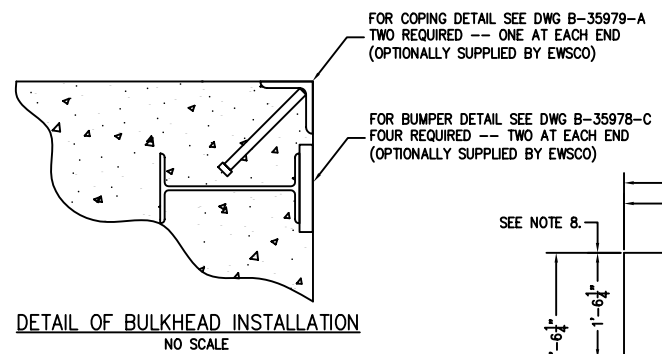
B-35978-C CHECK BOLT BUMPER  
(4) PLACES, (OPTIONALLY SUPPLIED BY EWSCO)

11' X 10' APPROACH APRON  
w/10" X 18.25" GRADE BEAM  
AT PERIMETER



PRELIMINARY NOT FOR  
CONSTRUCTION. FOR  
ILLUSTRATION ONLY.

PRELIMINARY NOT FOR  
CONSTRUCTION. FOR  
ILLUSTRATION ONLY.



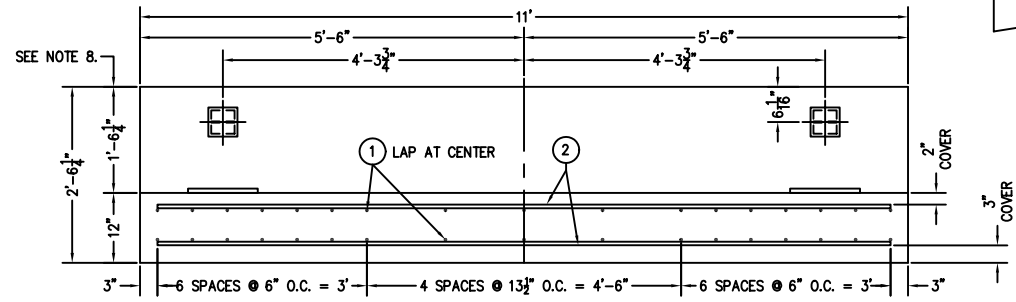
FOR NON COMMERCIAL SCALES PROVIDE AN APPROACH OF 2 FEET  
MINIMUM LENGTH WHICH IS LEVEL AND IN SAME PLANE AS THE  
PLATFORM.

FOR COMMERCIAL SCALES CHECK WITH LOCAL WEIGHTS AND  
MEASURES OFFICIALS BEFORE STARTING CONSTRUCTIONS.

NATIONAL INSTITUTE OF STANDARDS AND TECHNOLOGY (NIST)  
HANDBOOK 44 REQUIRES:

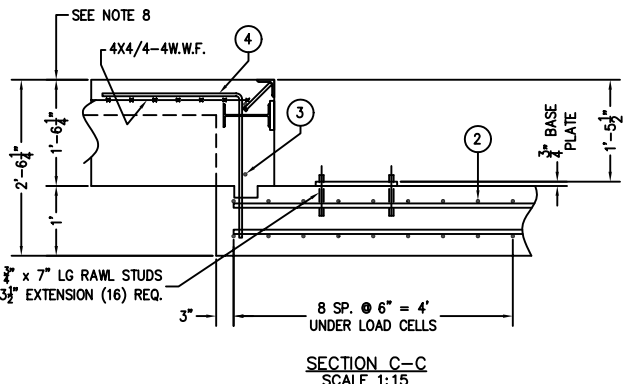
A) A STRAIGHT APPROACH OF AT LEAST ONE-HALF THE  
LENGTH OF THE PLATFORM.

B) NOT LESS THAN 10 FEET OF APPROACH ADJACENT TO  
THE PLATFORM TO BE CONSTRUCTED OF CONCRETE OR  
SIMILAR DURABLE MATERIAL AND BE LEVEL AND IN THE  
SAME PLANE AS THE PLATFORM.

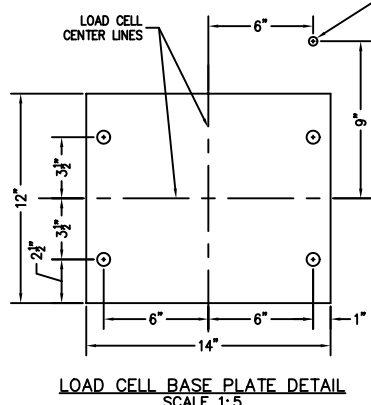


1/2" PVC CONDUIT FROM LOAD CELL LOCATION  
TO TOTALIZER LOCATION (8) PLACES  
ACCURATE LOCATION REQUIRED.

PRELIMINARY NOT FOR  
CONSTRUCTION. FOR  
ILLUSTRATION ONLY.



MATERIAL REQUIREMENTS		TOTAL WT. OF REBAR		4637				
CONCRETE:		4	22	4	4'-0"	2'-0"	2'-0"	59
APPROACHES	6.4 CU YD	3	4	5	10'-6"			44
FOUNDATION	30 CU YD	2	176	5	10'-6"			1928
REINFORCING:		1	68	5	36'-9"	(26" MIN. OVERLAP)		2606
REBAR	4637 LB							
4X4/4-WWF	220 SQ FT	PIECE NO.	QTY	BAR SIZE	LENGTH & DESCRIPTION			WT.



REVISION	DATE	BY	DATE	BY
A	10/08	CEM		

THIS DRAWING IS THE PROPERTY OF EMERY WINSLOW SCALE COMPANY, SEYMOUR, CONNECTICUT. THE INFORMATION CONTAINED HEREIN IS CONFIDENTIAL AND IS NOT TO BE USED OR DISSEMINATED TO OTHERS WITHOUT THE EXPRESS WRITTEN CONSENT OF EMERY WINSLOW SCALE COMPANY.

EMERY WINSLOW SCALE COMPANY		SEYMOUR, CT U.S.A. TERRE HAUTE, IN.	
UNLESS OTHERWISE SPECIFIED DIMENSIONS ARE IN INCHES			
MACHINING	FABRICATION	± .13	
DRAWN CEM DATE 05/26/08			
CHECKED	DATE		
ACAD FILENAME:	T02723		
LAYERS USED:	ALL		
SCALE	FIRST USED ON	DRAWING NO.	REV.
1:30		D-72581	A

NOTES:

1. CONCRETE STRENGTH: 4,000 PSI @ 28 DAYS
2. REINFORCING ROD: GRADE 60, 60,000 PSI, ASTM A615
3. SOIL BEARING IS ASSUMED TO BE 2,000 LB/SQ FT. TO BE VERIFIED IN THE FIELD BY END USER.
4. SLAB TO BE FLAT WITHIN 0.25" AND LEVEL WITHIN 0.13" PER 10 FT.
5. APPROACH COPING (BULKHEAD) TO BE ON A COMMON PLANE WITHIN 0.25".
6. TOP OF REBAR MUST BE PLACED TO CLEAR THE ANCHOR BOLTS.
7. ANCHOR BOLTS ARE TO BE INSTALLED AFTER FOUNDATION HAS CURED.
8. SEE SPEC. A499-364-2 FOR ON SITE SUBSURFACE CONDITIONS.
9. THE LENGTH FOR REBAR NO. 1 IS MINIMUM FOR 68 PIECES LAPPED. LONGER LAPS AND/OR PIECES MAY BE USED. MINIMUM LAP IS 26".
10. BASE PLATES ARE NOT GROUDED. IF GROUING IS REQUIRED ADD GROUT THICKNESS TO APPROACH DEPTH SHOWN.

FULL SIZE PLOT D-24X36