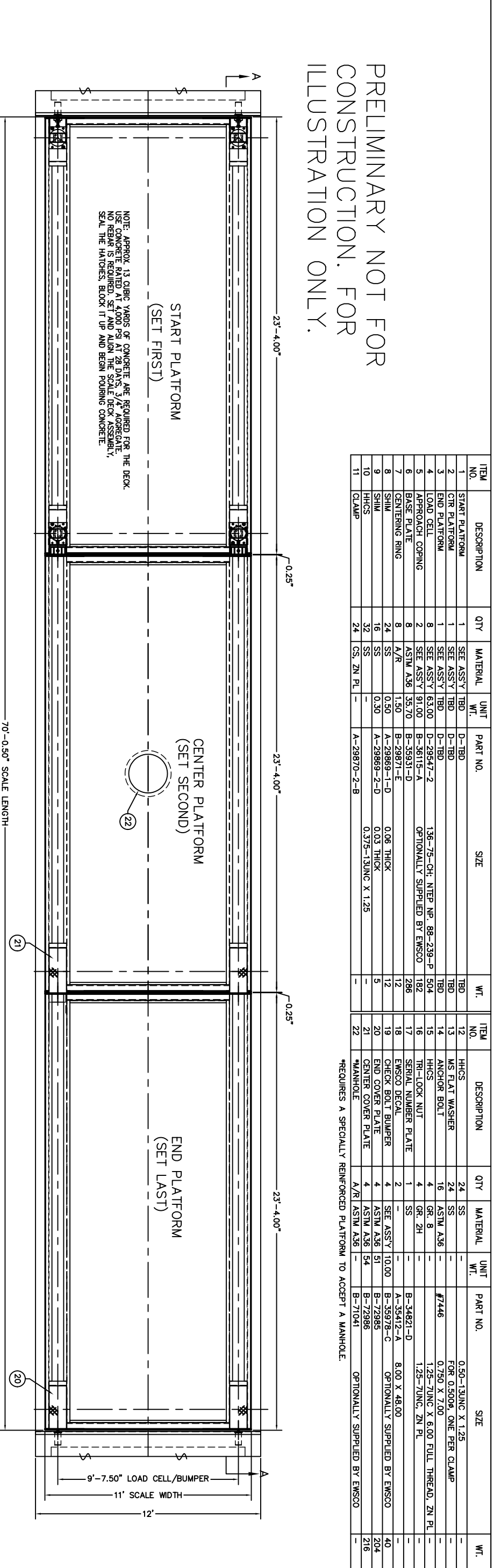


PRELIMINARY NOT FOR  
CONSTRUCTION. FOR  
ILLUSTRATION ONLY.



ITEM NO.	DESCRIPTION	QTY	MATERIAL	UNIT	PART NO.	SIZE	WT.	ITEM NO.	DESCRIPTION	QTY	MATERIAL	UNIT	PART NO.	SIZE	WT.	
1	START PLATFORM	1	SEE ASS'Y	TBD	D-TBD		TBD	12	HHCS	24	SS			0.50-13UNC X 1.25	-	
2	CTR PLATFORM	1	SEE ASS'Y	TBD	D-TBD		TBD	13	MS FLAT WASHER	24	SS			FOR 0.5009, ONE PER CLAMP	-	
3	END PLATFORM	1	SEE ASS'Y	TBD	D-TBD		TBD	14	ANCHOR BOLT	16	ASTM A36		#7446	0.750 X 7.00	-	
4	LOAD CELL	8	SEE ASS'Y	63.00	D-29547-2	136--75--CH; NTEP NP- 88-239-P	50.4	15	HHCS	4	GR- 8			1.25-7UNC X 6.00 FULL THREAD, ZN PL	-	
5	APPROACH COPING	2	SEE ASS'Y	91.00	B-36115-A	OPTIONALLY SUPPLIED BY EMSCO	182	16	TRI-LOCK NUT	4	GR- 2H			1.25-7UNC, ZN PL	-	
6	BASE PLATE	8	ASTM A36	35.70	B-35931-D		286	17	SERIAL NUMBER PLATE	1	SS				-	
7	CENTERING RING	8	A/R	1.50	B-29871-E		12	18	EMSCO DECAL	2				B-34821-D	-	
8	SHIM	24	SS	0.50	A-29869-1-D	0.06 THICK	12	19	CHECK BOLT BUMPER	4	SEE ASS'Y	10.00		B-35412-A	8.00 X 48.00	40
9	SHIM	16	SS	0.30	A-29869-2-D	0.03 THICK	5	20	END COVER PLATE	4	ASTM A36	51		B-35978-C	OPTIONALLY SUPPLIED BY EMSCO	40
10	HHCS	32	SS			0.375-13UNC X 1.25		21	CENTER COVER PLATE	4	ASTM A36	54		B-72985		204
11	CLAMP	24	CS, ZN PL		A-29870-2-B			22	MANHOLE	A/R	ASTM A36			B-71041	OPTIONALLY SUPPLIED BY EMSCO	216

\*REQUIRES A SPECIALLY REINFORCED PLATFORM TO ACCEPT A MANHOLE.

NOTE: APPROX. 13 CUBIC YARDS OF CONCRETE ARE REQUIRED FOR THE DECK.  
NO SHORING IS REQUIRED. A 10' X 10' SCALE ASSEMBLY,  
NO BEAMS IS REQUIRED. SET AND PAUSE THE SCALE DECK ASSEMBLY,  
SEAL THE HATCHES, BLOCK IT UP AND BEGIN POURING CONCRETE.

SHORE UP DECK AT MID-SPAN UNTIL CONCRETE CURES.  
USE HARDWOOD BLOCKS UNDERNEATH THE OUTSIDE  
WIDE FLANGE BEAMS, SIX (6) BLOCKS REQUIRED,  
APPROXIMATELY 16" LONG TO SPAN THE TWO OUTSIDE  
BEAMS AND AS REQUIRED TO REACH GROUND.

GAUGING PLUGS: REMOVE  
TO GAUGE TO 0.030".  
3 PLACES EACH CELL.  
BE SURE GAUGING PLUGS  
ARE TIGHTENED SECURELY  
AFTER GAUGING.

TYPICAL TOP VIEW OF CELL ON BASE PLATE  
SCALE 1:5

ATTENTION:  
SEE NOTE 1 ON INSTALLATION  
DRAWING # D-72974

FOR NON COMMERCIAL SCALES PROVIDE AN APPROACH OF 2 FEET  
MINIMUM LENGTH WHICH IS LEVEL AND IN SAME PLANE AS THE  
PLATFORM.  
FOR COMMERCIAL SCALES CHECK WITH LOCAL WEIGHTS AND  
MEASURES OFFICIALS BEFORE STARTING CONSTRUCTIONS.  
NATIONAL INSTITUTE OF STANDARDS AND TECHNOLOGY (NIST)  
HANDBOOK 44 REQUIRES:  
A) A STRAIGHT APPROACH OF AT LEAST ONE-HALF THE  
LENGTH OF THE PLATFORM.  
B) NOT LESS THAN 10 FEET OF APPROACH ADJACENT TO  
THE PLATFORM TO BE CONSTRUCTED OF CONCRETE OR  
SIMILAR DURABLE MATERIAL AND BE LEVEL AND IN THE  
SAME PLANE AS THE PLATFORM.  
NOTE: 13 CUBIC YARDS OF CONCRETE ARE REQUIRED FOR THE DECK.  
DRAWING REFERENCES:  
D-73007 SLAB FOUNDATION  
D-73008 ALTERNATE FOUNDATION  
B-72974 INSTALLATION INSTRUCTIONS  
NTEP NO. 89-185PA3 4 SECTION TUBING DIAGRAM  
CLC = 56,000 LB CLASS III

FULL SIZE PLOT D-24X36

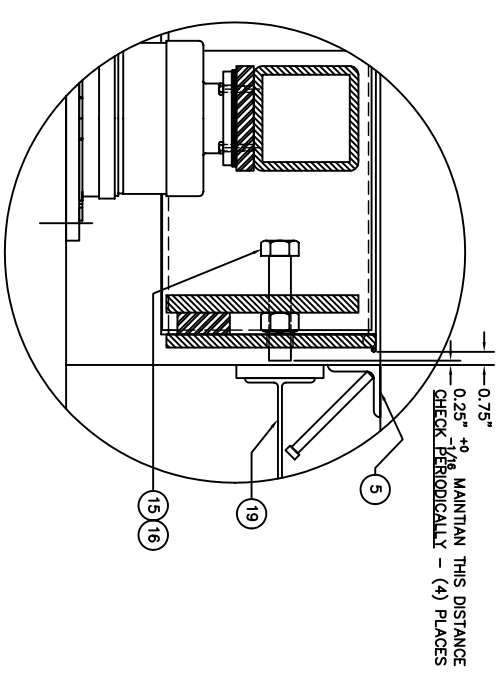
EMERY WINSLOW SCALE COMPANY  
SERVING THE USA

REVISION	DATE	BY	DATE	REVISION	DATE	BY

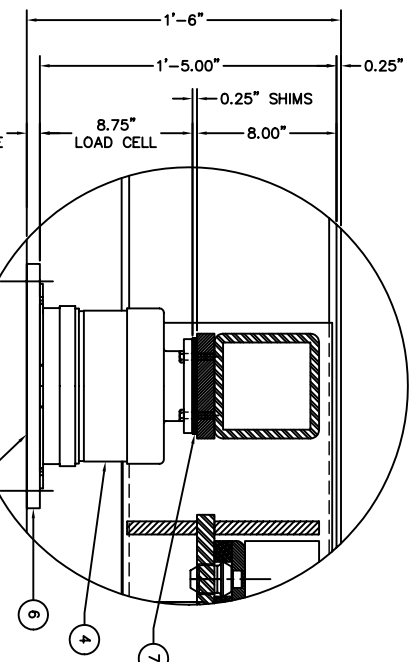
ALL SHARP CORNERS AND EDGES TO BE BROKEN  
UNLESS OTHERWISE SPECIFIED  
DIMENSIONS ARE IN INCHES  
MACHINING FABRICATION  
DATE 05/18/09  
CHECKED DATE 05/18/09  
MAD TREVINO  
LTERS USED: ALL

MODEL: H84-10070-11CD-7A  
70" X 11", 100 TON; 1-BEAM DESIGN  
AG OUTLINE ARRANGEMENT  
SCALE FIRST USED ON DRAWING NO. D-73006

DETAIL A  
SCALE 1:5



DETAIL B  
SCALE 1:5



SECTION A-A

