

ITEM NO.	DESCRIPTION	QTY	MATERIAL	NET WT.	PART NO.	SIZE	WT.
1	STRUCKER	1	WOOD	7.7	7.7	7.7	7.7
2	LOAD CELL	1	WOOD	7.7	7.7	7.7	7.7
3	BASE PLATE	1	WOOD	7.7	7.7	7.7	7.7
4	STRUCKER	1	WOOD	7.7	7.7	7.7	7.7
5	LOAD CELL	1	WOOD	7.7	7.7	7.7	7.7
6	BASE PLATE	1	WOOD	7.7	7.7	7.7	7.7
7	STRUCKER	1	WOOD	7.7	7.7	7.7	7.7
8	LOAD CELL	1	WOOD	7.7	7.7	7.7	7.7
9	BASE PLATE	1	WOOD	7.7	7.7	7.7	7.7
10	STRUCKER	1	WOOD	7.7	7.7	7.7	7.7
11	LOAD CELL	1	WOOD	7.7	7.7	7.7	7.7
12	BASE PLATE	1	WOOD	7.7	7.7	7.7	7.7
13	STRUCKER	1	WOOD	7.7	7.7	7.7	7.7
14	LOAD CELL	1	WOOD	7.7	7.7	7.7	7.7
15	BASE PLATE	1	WOOD	7.7	7.7	7.7	7.7
16	STRUCKER	1	WOOD	7.7	7.7	7.7	7.7
17	LOAD CELL	1	WOOD	7.7	7.7	7.7	7.7
18	BASE PLATE	1	WOOD	7.7	7.7	7.7	7.7
19	STRUCKER	1	WOOD	7.7	7.7	7.7	7.7
20	LOAD CELL	1	WOOD	7.7	7.7	7.7	7.7
21	BASE PLATE	1	WOOD	7.7	7.7	7.7	7.7
22	STRUCKER	1	WOOD	7.7	7.7	7.7	7.7
23	LOAD CELL	1	WOOD	7.7	7.7	7.7	7.7
24	BASE PLATE	1	WOOD	7.7	7.7	7.7	7.7
25	STRUCKER	1	WOOD	7.7	7.7	7.7	7.7
26	LOAD CELL	1	WOOD	7.7	7.7	7.7	7.7
27	BASE PLATE	1	WOOD	7.7	7.7	7.7	7.7
28	STRUCKER	1	WOOD	7.7	7.7	7.7	7.7
29	LOAD CELL	1	WOOD	7.7	7.7	7.7	7.7
30	BASE PLATE	1	WOOD	7.7	7.7	7.7	7.7
31	STRUCKER	1	WOOD	7.7	7.7	7.7	7.7
32	LOAD CELL	1	WOOD	7.7	7.7	7.7	7.7
33	BASE PLATE	1	WOOD	7.7	7.7	7.7	7.7
34	STRUCKER	1	WOOD	7.7	7.7	7.7	7.7
35	LOAD CELL	1	WOOD	7.7	7.7	7.7	7.7
36	BASE PLATE	1	WOOD	7.7	7.7	7.7	7.7
37	STRUCKER	1	WOOD	7.7	7.7	7.7	7.7
38	LOAD CELL	1	WOOD	7.7	7.7	7.7	7.7
39	BASE PLATE	1	WOOD	7.7	7.7	7.7	7.7
40	STRUCKER	1	WOOD	7.7	7.7	7.7	7.7
41	LOAD CELL	1	WOOD	7.7	7.7	7.7	7.7
42	BASE PLATE	1	WOOD	7.7	7.7	7.7	7.7
43	STRUCKER	1	WOOD	7.7	7.7	7.7	7.7
44	LOAD CELL	1	WOOD	7.7	7.7	7.7	7.7
45	BASE PLATE	1	WOOD	7.7	7.7	7.7	7.7
46	STRUCKER	1	WOOD	7.7	7.7	7.7	7.7
47	LOAD CELL	1	WOOD	7.7	7.7	7.7	7.7
48	BASE PLATE	1	WOOD	7.7	7.7	7.7	7.7
49	STRUCKER	1	WOOD	7.7	7.7	7.7	7.7
50	LOAD CELL	1	WOOD	7.7	7.7	7.7	7.7
51	BASE PLATE	1	WOOD	7.7	7.7	7.7	7.7
52	STRUCKER	1	WOOD	7.7	7.7	7.7	7.7
53	LOAD CELL	1	WOOD	7.7	7.7	7.7	7.7
54	BASE PLATE	1	WOOD	7.7	7.7	7.7	7.7
55	STRUCKER	1	WOOD	7.7	7.7	7.7	7.7
56	LOAD CELL	1	WOOD	7.7	7.7	7.7	7.7
57	BASE PLATE	1	WOOD	7.7	7.7	7.7	7.7
58	STRUCKER	1	WOOD	7.7	7.7	7.7	7.7
59	LOAD CELL	1	WOOD	7.7	7.7	7.7	7.7
60	BASE PLATE	1	WOOD	7.7	7.7	7.7	7.7
61	STRUCKER	1	WOOD	7.7	7.7	7.7	7.7
62	LOAD CELL	1	WOOD	7.7	7.7	7.7	7.7
63	BASE PLATE	1	WOOD	7.7	7.7	7.7	7.7
64	STRUCKER	1	WOOD	7.7	7.7	7.7	7.7
65	LOAD CELL	1	WOOD	7.7	7.7	7.7	7.7
66	BASE PLATE	1	WOOD	7.7	7.7	7.7	7.7
67	STRUCKER	1	WOOD	7.7	7.7	7.7	7.7
68	LOAD CELL	1	WOOD	7.7	7.7	7.7	7.7
69	BASE PLATE	1	WOOD	7.7	7.7	7.7	7.7
70	STRUCKER	1	WOOD	7.7	7.7	7.7	7.7
71	LOAD CELL	1	WOOD	7.7	7.7	7.7	7.7
72	BASE PLATE	1	WOOD	7.7	7.7	7.7	7.7
73	STRUCKER	1	WOOD	7.7	7.7	7.7	7.7
74	LOAD CELL	1	WOOD	7.7	7.7	7.7	7.7
75	BASE PLATE	1	WOOD	7.7	7.7	7.7	7.7
76	STRUCKER	1	WOOD	7.7	7.7	7.7	7.7
77	LOAD CELL	1	WOOD	7.7	7.7	7.7	7.7
78	BASE PLATE	1	WOOD	7.7	7.7	7.7	7.7
79	STRUCKER	1	WOOD	7.7	7.7	7.7	7.7
80	LOAD CELL	1	WOOD	7.7	7.7	7.7	7.7
81	BASE PLATE	1	WOOD	7.7	7.7	7.7	7.7
82	STRUCKER	1	WOOD	7.7	7.7	7.7	7.7
83	LOAD CELL	1	WOOD	7.7	7.7	7.7	7.7
84	BASE PLATE	1	WOOD	7.7	7.7	7.7	7.7
85	STRUCKER	1	WOOD	7.7	7.7	7.7	7.7
86	LOAD CELL	1	WOOD	7.7	7.7	7.7	7.7
87	BASE PLATE	1	WOOD	7.7	7.7	7.7	7.7
88	STRUCKER	1	WOOD	7.7	7.7	7.7	7.7
89	LOAD CELL	1	WOOD	7.7	7.7	7.7	7.7
90	BASE PLATE	1	WOOD	7.7	7.7	7.7	7.7
91	STRUCKER	1	WOOD	7.7	7.7	7.7	7.7
92	LOAD CELL	1	WOOD	7.7	7.7	7.7	7.7
93	BASE PLATE	1	WOOD	7.7	7.7	7.7	7.7
94	STRUCKER	1	WOOD	7.7	7.7	7.7	7.7
95	LOAD CELL	1	WOOD	7.7	7.7	7.7	7.7
96	BASE PLATE	1	WOOD	7.7	7.7	7.7	7.7
97	STRUCKER	1	WOOD	7.7	7.7	7.7	7.7
98	LOAD CELL	1	WOOD	7.7	7.7	7.7	7.7
99	BASE PLATE	1	WOOD	7.7	7.7	7.7	7.7
100	STRUCKER	1	WOOD	7.7	7.7	7.7	7.7

INSTALLATION INSTRUCTIONS:

ATTENTION:

1.0 TOP OF BASE PLATES MUST BE LEVEL WITHIN 1/4" AND ON A COMMON PLANE WITHIN 1/4" INCH. IF TOP OF BASE PLATE/CONCRETE CANNOT BE MAINTAINED ON THE SAME PLANE WITHIN 1/4" INCH, OR CONCRETE MUST BE SLOPED FOR DRAINAGE, THE PIT MUST BE DEEPENED TO ACCOMMODATE GRouting.

2.0 BASE PLATE INSTALLATION BEFORE PLATFORMS ARE SET:

2.1 LAYOUT BASE PLATE CENTER LINES AS SHOWN ON FOUNDATION DRAWING BY MARKING TOP OF CONCRETE SLAB WITH CHALK LINE. PLACE CONCRETE NAILS AT CHALK LINE INTERSECTIONS TO ESTABLISH CENTER OF LOAD CELLS. LAY DOWN BASE PLATES WITHIN 1/4" OF CENTER LINE. USE CENTER LINE DRILL (2) BASE PLATE MOUNTING HOLES DIAGONALLY AT EACH BASE PLATE AS PER ANCHOR BOLT MANUFACTURERS SPECIFICATION.

2.2 SET LOAD CELLS ONTO BASE PLATES.

2.3 LAYOUT 7 INCH HIGH WOODEN BLOCKS, OR JACKS AS SHOWN IN VIEW "A", AND SET PLATFORMS IN SEQUENCE START, CENTER, END ONTO 7 INCH WOODEN BLOCKS.

2.4 PLACE JACKS AND LOWER PLATFORM ONTO LOAD CELLS.

3.0 ALTERNATE BASE PLATE INSTALLATION AFTER PLATFORMS ARE SET:

3.1 PLACE BASE PLATES IN APPROX. AREA OF LOAD CELL.

3.2 LAYOUT 7 INCH HIGH WOODEN BLOCKS, OR JACKS AS SHOWN AND SET PLATFORMS IN SEQUENCE START, CENTER, END ONTO 7 INCH WOODEN BLOCKS.

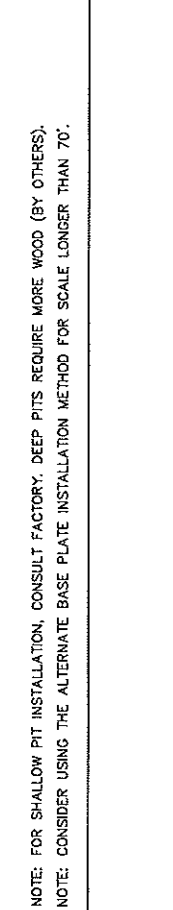
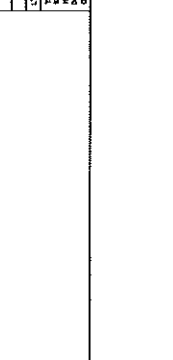
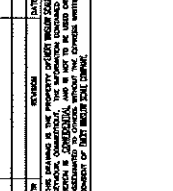
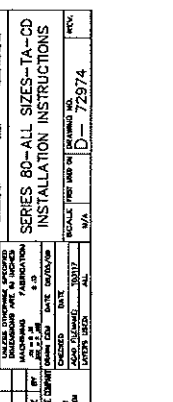
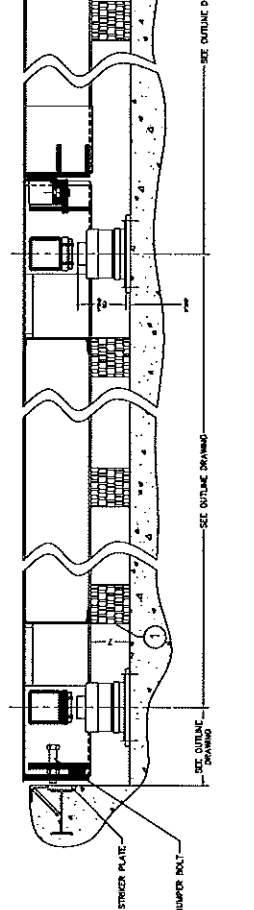
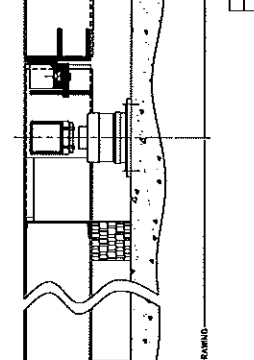
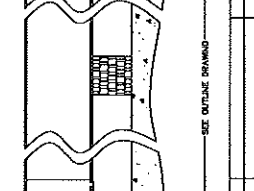
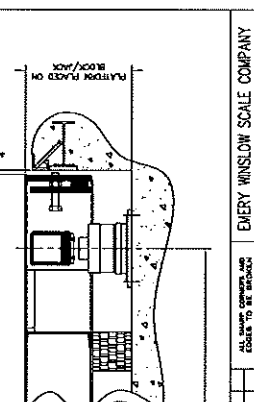
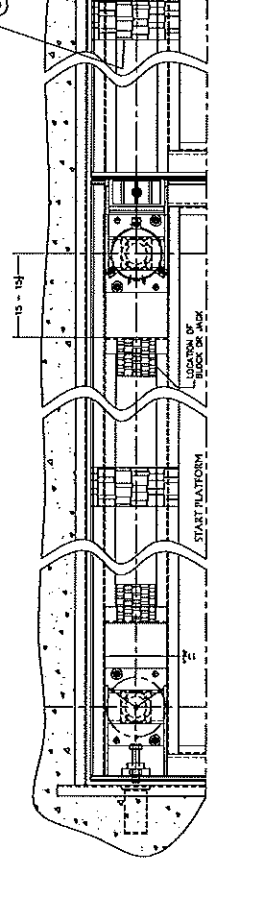
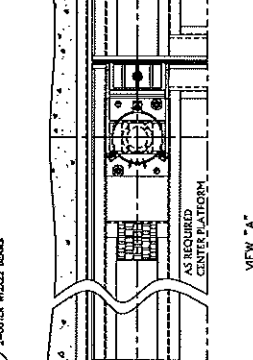
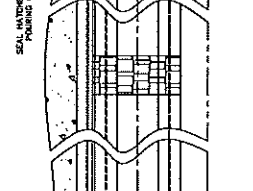
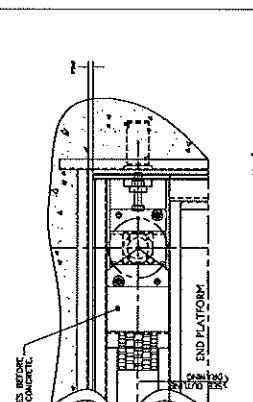
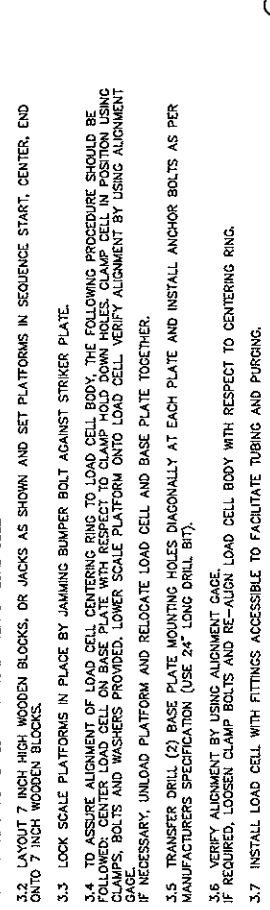
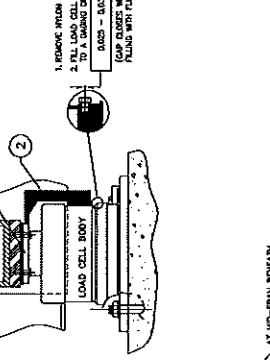
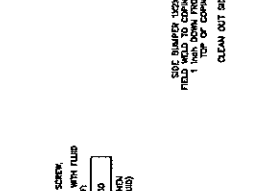
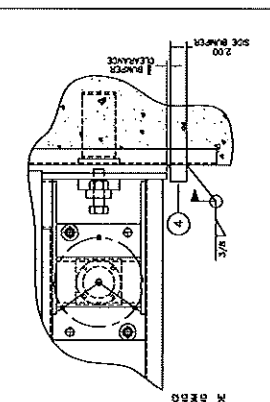
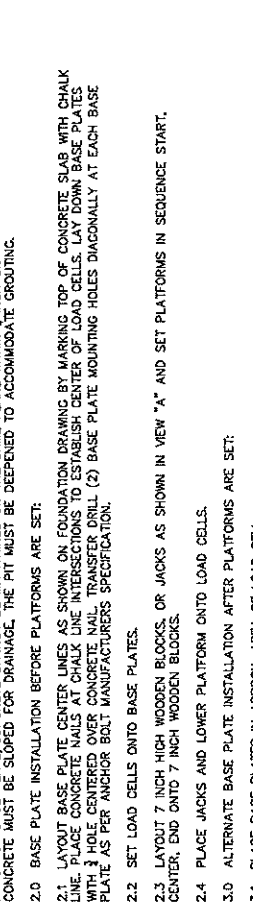
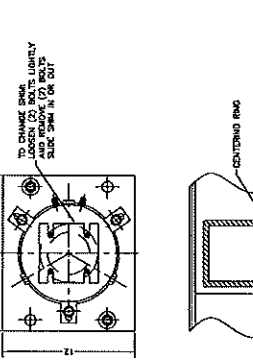
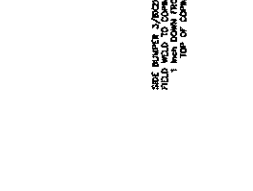
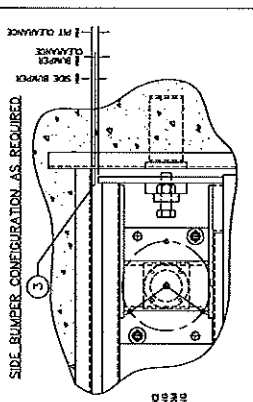
3.3 LOCK SCALE PLATFORMS IN PLACE BY JAMMING BUMPER BOLT AGAINST STRIKER PLATE.

3.4 TO ASSURE ALIGNMENT OF LOAD CELL CENTERING RING TO LOAD CELL BODY, THE FOLLOWING PROCEDURE SHOULD BE USED: UNLOAD CELL AND RELOCATE LOWER SCALE PLATFORM ONTO LOAD CELL. VERIFY ALIGNMENT BY USING ALIGNMENT GAUGE, BOLTS AND WASHERS PROVIDED. LOWER SCALE PLATFORM ONTO LOAD CELL. VERIFY ALIGNMENT BY USING ALIGNMENT GAUGE. IF NECESSARY, UNLOAD PLATFORM AND RELOCATE LOAD CELL AND BASE PLATE TOGETHER.

3.5 TRANSFER DRILL (2) BASE PLATE MOUNTING HOLES DIAGONALLY AT EACH PLATE AND INSTALL ANCHOR BOLTS AS PER MANUFACTURERS SPECIFICATION (USE 24" LONG DRILL BIT).

3.6 VERIFY ALIGNMENT BY USING ALIGNMENT GAUGE.

3.7 INSTALL LOAD CELL WITH FITTINGS ACCESSIBLE TO FACILITATE TUBING AND PURGING.



EMERY WINSLOW SCALE COMPANY
 WINDSOR, VT
 SERIES 80-ALL SIZES-TA-CD
 INSTALLATION INSTRUCTIONS
 SCALE PER UNIT OF MEASUREMENT
 D-75974

FOR SHALLOW PIT INSTALLATION, CONSULT FACTORY. DEEP PITS REQUIRE MORE WOOD (BY OTHERS).
 NOTE: CONSIDER USING THE ALTERNATE BASE PLATE INSTALLATION METHOD FOR SCALE LONGER THAN 70'.